



TRADITIONAL THREE BEDROOM EDWARDIAN BAY FRONTED MID-TERRACED PROPERTY. The property is ideally located in a sought-after cul-de-sac location of similar period properties just a short walk to Alexandra Palace National Rail Station (20/25 Mins City/West End). Internally the accommodation comprises; Three bedrooms (two dbl's, one sngl), two inter-communicating reception rooms, a combined kitchen/morning room, upstairs bathroom/WC. There is a patio and small garden to the rear. N.B. THERE IS POTENTIAL TO DEVELOP THE LARGE LOFT SPACE INTO A 4TH BEDROOM/WITH EN-SUITE SHOWER ROOM. - CHAIN FREE

**Cornwall Avenue, N22 7DA**

**£700,000 Freehold**

HOBARTS ESTATE AGENTS

3 Crescent Road, Alexandra Park, London, N22 7RP

[sales@hobartsproperty.co.uk](mailto:sales@hobartsproperty.co.uk)

[www.hobarts.co.uk](http://www.hobarts.co.uk)

0208 889 4322

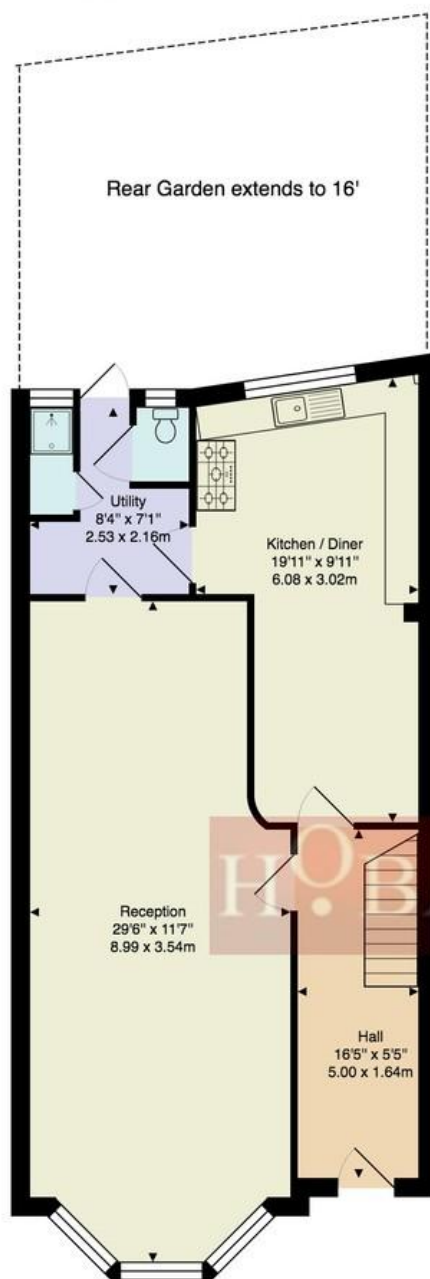


- Three Bedrooms
- Combined Kitchen/Morning Room
- Rear Garden
- (20/25 Mins City/West End)

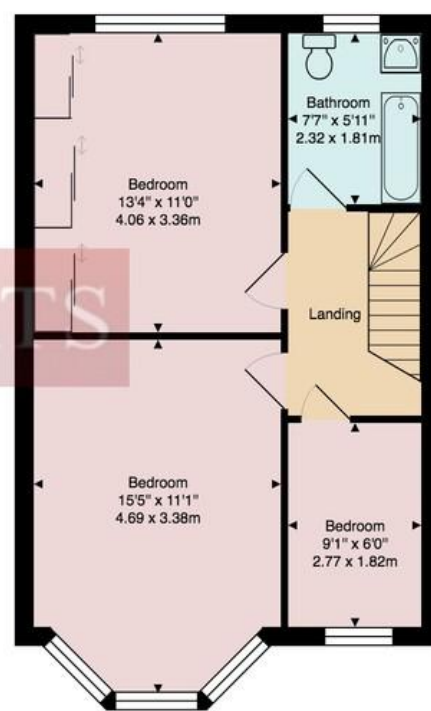
- Two Reception Rooms
- U.P.V.C Double Glazing
- Combined Bathroom/WC
- Close to Rail/Shops/All Amenities
- Loft Space /Fourth Bedroom Potential



## Cornwall Avenue N22



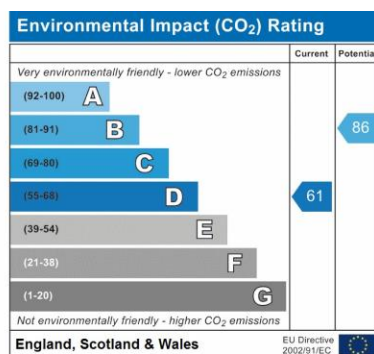
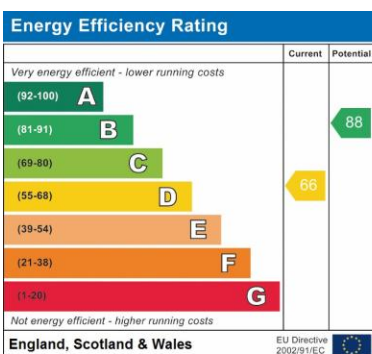
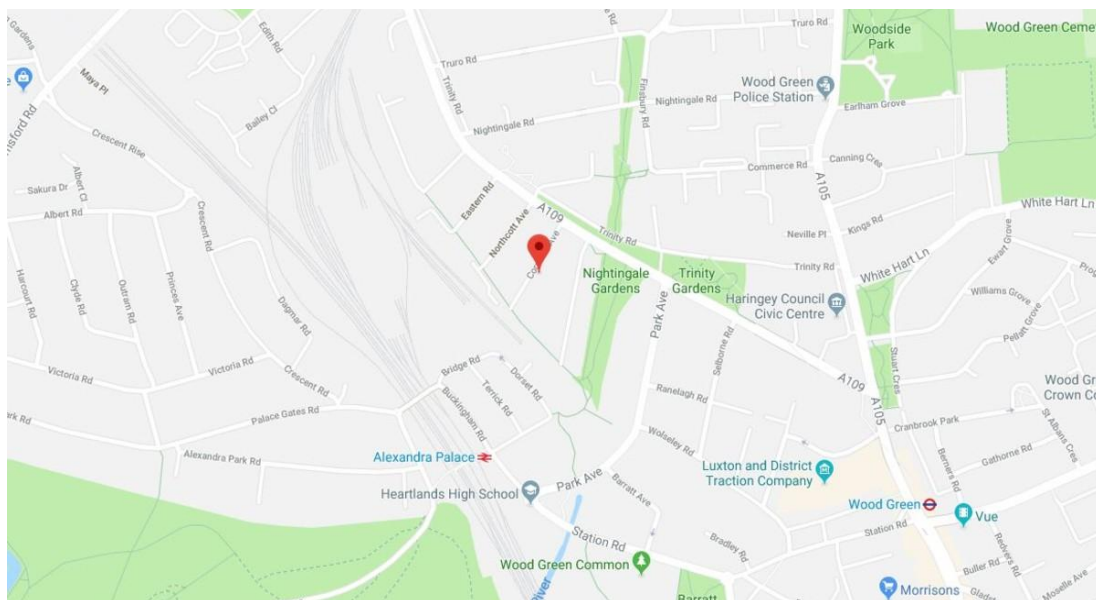
Ground Floor



First Floor

Approx. Gross Internal Area: 1106 ft<sup>2</sup> ... 102.7 m<sup>2</sup>

All measurements and areas are approximate only.  
Dimensions are not to scale. This plan is for guidance  
only and must not be relied upon as a statement of fact.  
(c) Peninsula Surveys Ltd



**Tenure:**  
Freehold

**Local Authority:**  
Haringey London  
Borough Council

**Viewings:**  
Strictly by appointment via  
**HOBARTS ESTATE AGENTS**  
020 8889 4322

**Contact:**  
3 Crescent Road  
London N22 7RP

[sales@hobartsproperty.co.uk](mailto:sales@hobartsproperty.co.uk)  
[www.hobarts.co.uk](http://www.hobarts.co.uk)

rightmove

PrimeLocation.com

homes24.co.uk

Zoopla.co.uk

propertyfinder.com



These property details, including measurements, floor plans and items depicted in photographs etc. are intended only as a brief guide to prospective purchasers and are not intended to be relied upon for any purpose whatsoever. Any interested party should satisfy themselves by inspection or otherwise as to the correctness of each statement contained in these details.