



## Shrewsbury Road, N11 2LN      £649,950 FREEHOLD

A brilliant opportunity buy and move into the completely refurbished three bedroom property, the house has a brand new fitted kitchen and bathroom, new flooring and carpets, and has been painted from top to bottom. The house comprises of a large reception room and an 18' kitchen dinner leading onto a 54 garden. Three bedrooms on the first floor and a family bathroom. This house is offered on a chain free basis and is one not to be missed.

T: 0208 365 8900 E: [boundsgreen@wilkinsonbyrne.com](mailto:boundsgreen@wilkinsonbyrne.com) W: [www.wilkinsonbyrne.com](http://www.wilkinsonbyrne.com)

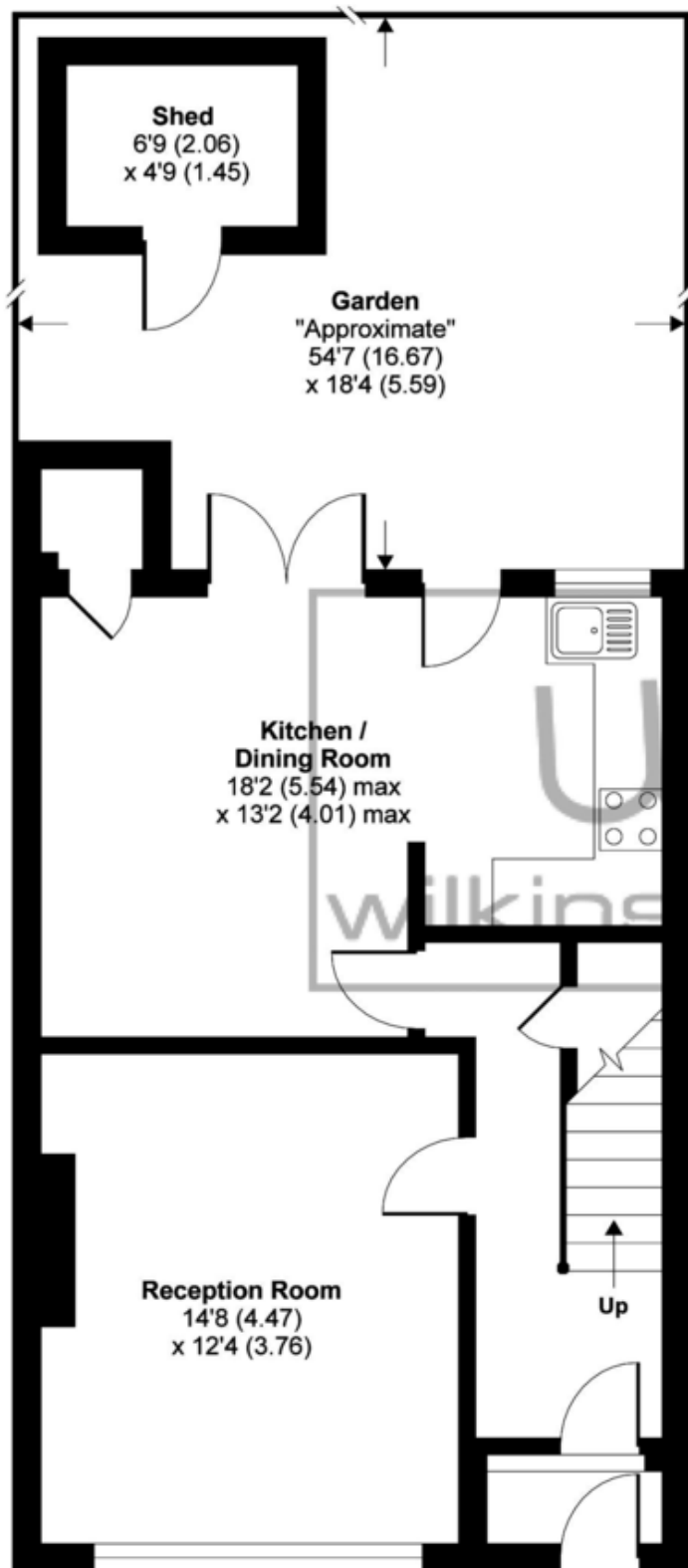




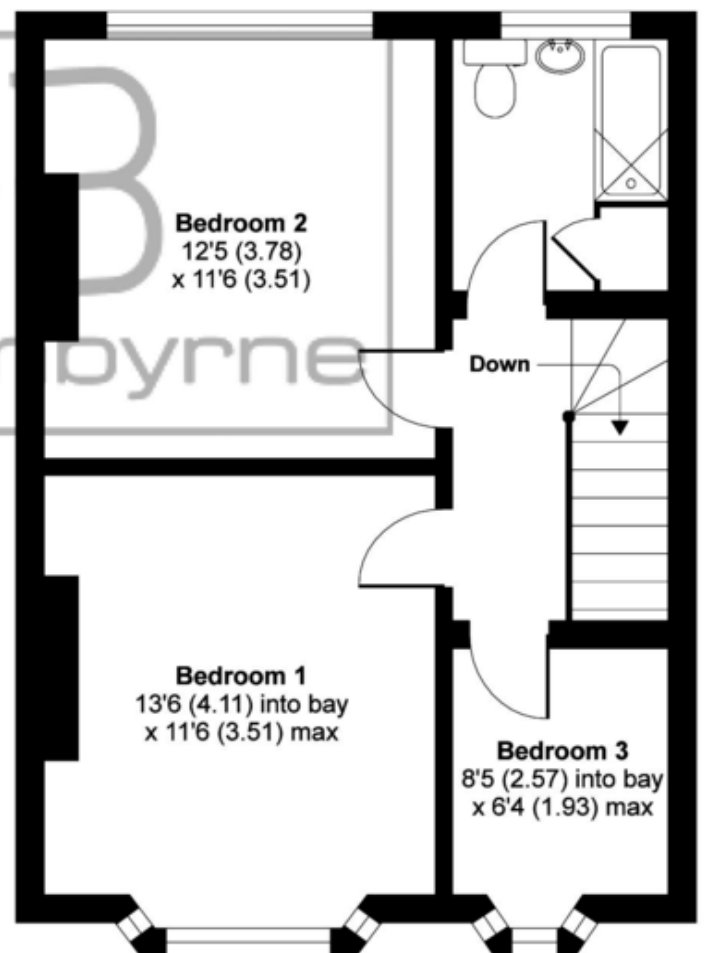
These particulars, whilst believed to be accurate set out as a general outline only for guidance and do not constitute any part of an offer or contract. Intending purchasers should not rely on them as fittings. Room sizes should not be relied upon for carpets and furnishings. The measurements given are approximate. No person in this firm's employment has the authority to make or give any representation or warranty in respect of the property.

# Shrewsbury Road, London, N11

APPROX. GROSS INTERNAL FLOOR AREA 1007 SQ FT 93.6 SQ METRES (EXCLUDES SHED)



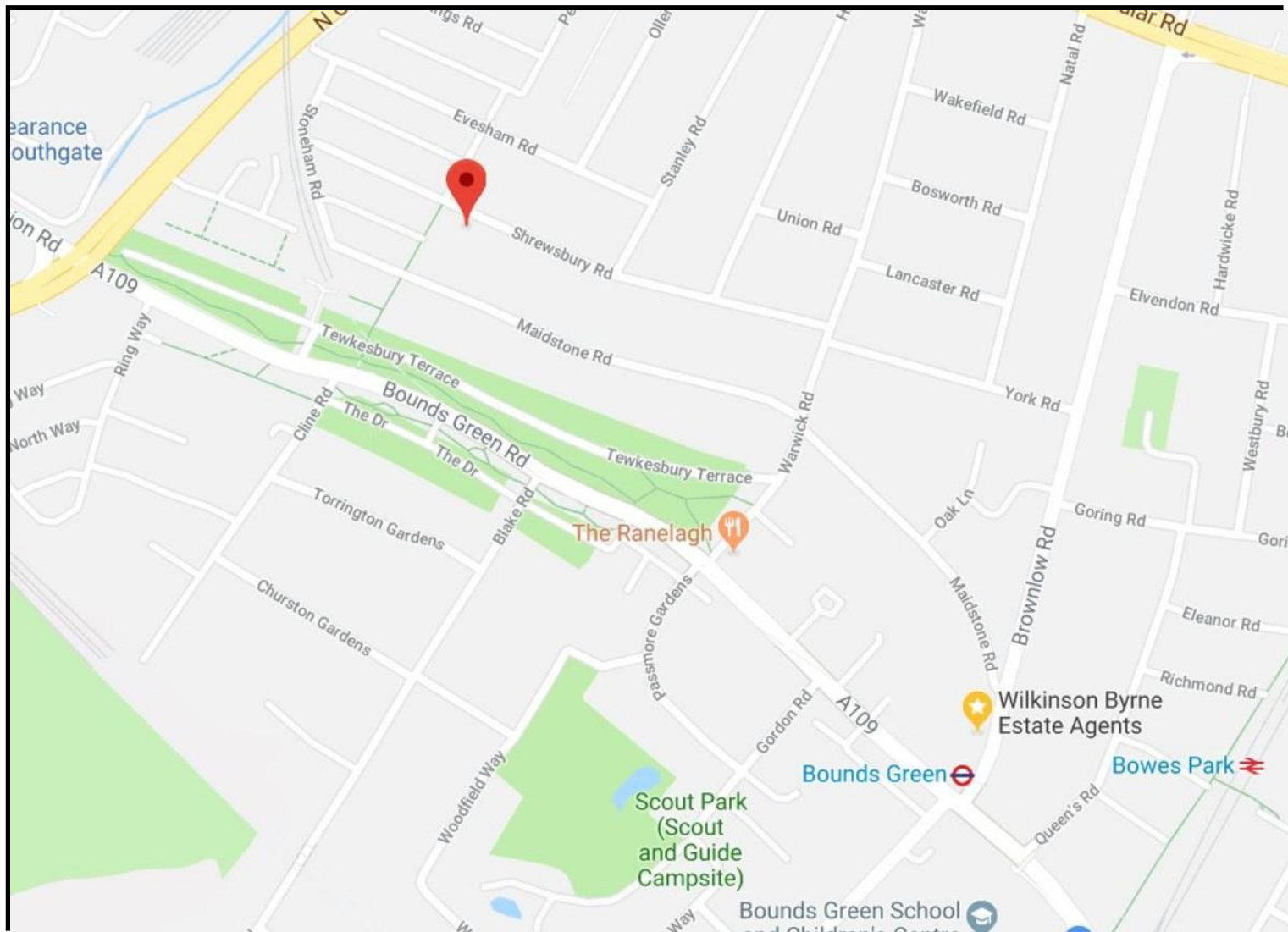
GROUND FLOOR



FIRST FLOOR

Whilst every attempt has been made to ensure the accuracy of the floor plan contained here, measurements of doors, windows and rooms are approximate and no responsibility is taken for any error, omission or misstatement. These plans are for representation purposes only as defined by RICS Code of Measuring Practice and should be used as such by any prospective purchaser. Specifically no guarantee is given on the total square footage of the property if quoted on this plan. Any figure given is for initial guidance only and should not be relied on as a basis of valuation.





## Energy Efficiency Rating

	Current	Potential
Very energy efficient - lower running costs		
(92 plus) <b>A</b>		
(81-91) <b>B</b>		
(69-80) <b>C</b>		
(55-68) <b>D</b>		69
(39-54) <b>E</b>	46	
(21-38) <b>F</b>		
(1-20) <b>G</b>		
Not energy efficient - higher running costs		
<b>England &amp; Wales</b>	EU Directive 2002/91/EC	

## Environmental Impact (CO<sub>2</sub>) Rating

	Current	Potential
Very environmentally friendly - lower CO <sub>2</sub> emissions		
(92 plus) <b>A</b>		
(81-91) <b>B</b>		
(69-80) <b>C</b>		
(55-68) <b>D</b>		60
(39-54) <b>E</b>		
(21-38) <b>F</b>	39	
(1-20) <b>G</b>		
Not environmentally friendly - higher CO <sub>2</sub> emissions		
<b>England &amp; Wales</b>	EU Directive 2002/91/EC	

Bounds Green Office  
 3 Latham Court  
 Brownlow Road  
 London N11 2ES  
 0208 - 365 - 8900  
[boundsgreen@wilkinsonbyrne.com](mailto:boundsgreen@wilkinsonbyrne.com)

Turnpike Lane Office  
 8 Turnpike Parade  
 Green Lanes  
 London N15 3EA  
 0208 - 888 - 0022  
[turnpikelane@wilkinsonbyrne.com](mailto:turnpikelane@wilkinsonbyrne.com)