



Heydon Road, Fininstall, Bromsgrove, B60 3DA | £360,000
Four Bedroom Detached Bungalow



Features:

- Four Bedrooms
- Bathroom and Shower Room
- Lounge
- Kitchen/Diner
- Rear Garden with Brick built Outhouse/Shed and Views to Local Fields
- Block Paved Driveway

Summary:

A deceptively spacious four bedroom detached bungalow, offered with off road parking, a pleasant rear garden and delightful views to the rear of local fields, situated in the sought after area of Finstall, Bromsgrove.

Description:

The accommodation, in brief, features:- Block Paved Driveway, Enclosed Porch, Hall, Lounge with Log Stove and French Doors to Rear Garden, Kitchen/Diner with French Doors to Rear Garden, Built In Cupboard to Diner, and Integrated Double Oven and Gas Hob to Kitchen, Bathroom, Double Bedroom Two with Bay Window, Bedroom Three, Stairs to First Floor Landing, Master Bedroom, Shower Room and Bedroom Four with Eaves Storage.

Outside:

Outside, the property enjoys a rear garden with paved patio with steps down to a lawn with substantial brick built outhouse/shed, well stocked beds and border and low fenced boundaries with views to local fields.

Location:

Finstall is a desirable village on the outskirts of Bromsgrove Town and hosts the Bromsgrove Rugby Football Club. Bromsgrove itself offers a range of shopping, restaurant, leisure and high street facilities including the prestigious Bromsgrove School. Nearby, Aston Fields train station offers transport links and Bromsgrove itself offers easy access to the motorway network.



Room Dimensions:

Porch

Hall

Lounge:

15' 7" x 11' 11" (4.75m x 3.65m)

Kitchen/Diner:

20' 8" x 9' 10" (6.30m x 3.00m)

Bathroom:

9' 10" x 4' 11" (3.00m x 1.50m)

Bedroom Two:

14' 1" x 11' 11" (4.30m into the bay x 3.65m)

Bedroom Three:

10' 11" x 10' 0" (3.35m x 3.05m)

Stairs To First Floor Landing

Master Bedroom:

12' 5" x 11' 3" (3.80m x 3.45m)

Bedroom Four:

12' 3" x 7' 6" (3.75m x 2.30m) max

Shower Room:

7' 8" x 5' 2" (2.35m x 1.60m)

EPC: E

Council Tax Band: E

Tenure: Freehold

For more information on Heydon Road or to arrange a viewing, please call the Bromsgrove Office on 01527 872 479

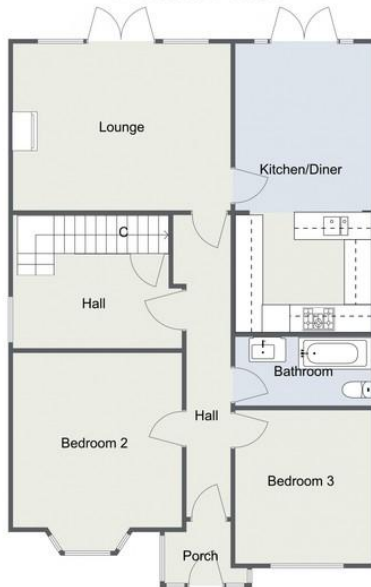


Heydon Road, Finstall

First Floor



Ground Floor



Total Area Approx:
121.1 sq metres (1304 sq ft)

For illustrative purposes only. Decorative finishes, fixtures & fittings do not represent the current state of the property. Measurements are approximate & not to scale. Floor Plans made using RoomSketcher.

Heydon Road, Finstall

First Floor



Ground Floor



Total Area Approx:
121.1 sq metres (1304 sq ft)

For illustrative purposes only. Decorative finishes, fixtures & fittings do not represent the current state of the property. Measurements are approximate & not to scale. Floor Plans made using RoomSketcher.

Please read the following: These particulars are for general guidance only and are based on information supplied and approved by the seller. Complete accuracy cannot be guaranteed and may be subject to errors and/or omissions. They do not constitute a contract or part of a contract in any way. We are not surveyors or conveyancing experts therefore we cannot and do not comment on the condition, issues relating to title or other legal issues that may affect this property. Interested parties should employ their own professionals to make enquiries before carrying out any transactional decisions. Photographs are provided for illustrative purposes only and the items shown in these are not necessarily included in the sale, unless specifically stated. The mention of any fixtures, fittings and/or appliances does not imply that they are in full efficient working order and they have not been tested. All dimensions are approximate. We are not liable for any loss arising from the use of these details.