



SYMONDS + GREENHAM

Estate and Letting Agents



12 Lythe Avenue, Hull, East Yorkshire HU5 4TE

£124,000

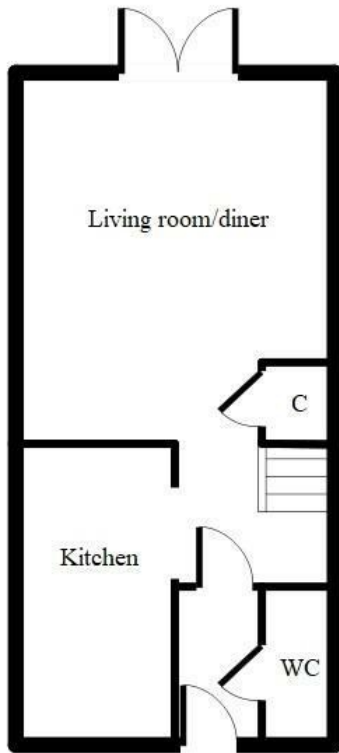
NEW BUILD HOME - HELP TO BUY SCHEME AVAILABLE - PERFECT FIRST TIME BUYER HOME

PERFECT FOR FIRST TIME BUYERS, YOUNG FAMILIES AND PROFESSIONALS

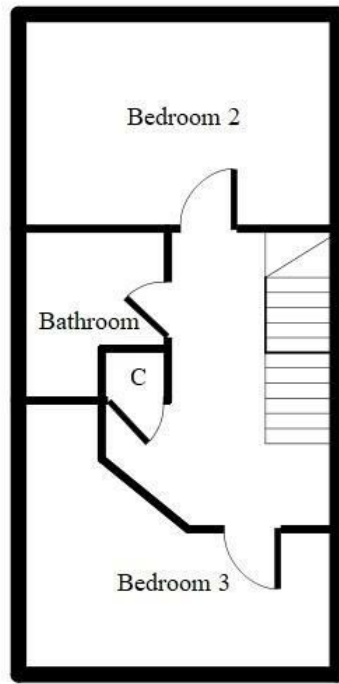
Situated in the buoyant HU5 area of Bricknell Avenue, this new build home will be of the highest quality with a stylish modern kitchen, contemporary bathroom suite, en-suite to master, 3 double bedrooms, generous garden laid to lawn and off street parking.

Interest is expected to be high on this property, so anyone interested in purchasing should register their interest as soon as possible. This could be your brand new home for as little as 5% deposit with the government backed "help to buy" scheme.

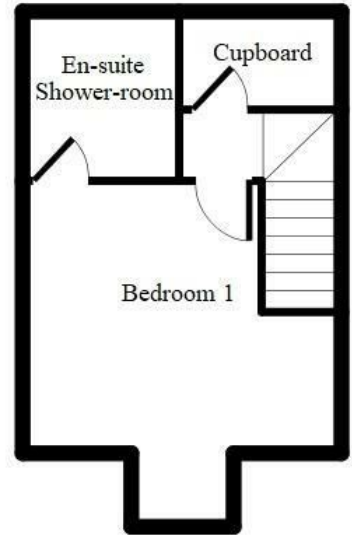
Call to arrange your viewing today!



Ground floor



First floor



Second floor

DISCLAIMER - The above floorplan has been designed from an architects drawings and the final build may differ slightly or be a mirrored version of the above.

Energy Efficiency Rating		Current	Potential
Very energy efficient - lower running costs			
(92 plus)	A		
(81-91)	B		
(69-80)	C		
(55-68)	D		
(39-54)	E		
(21-38)	F		
(1-20)	G		
Not energy efficient - higher running costs			
England & Wales		EU Directive 2002/91/EC	

Environmental Impact (CO ₂) Rating		Current	Potential
Very environmentally friendly - lower CO ₂ emissions			
(02 plus)	A		
(81-91)	B		
(69-80)	C		
(55-68)	D		
(39-54)	E		
(21-38)	F		
(1-20)	G		
Not environmentally friendly - higher CO ₂ emissions			
England & Wales		EU Directive 2002/91/EC	

