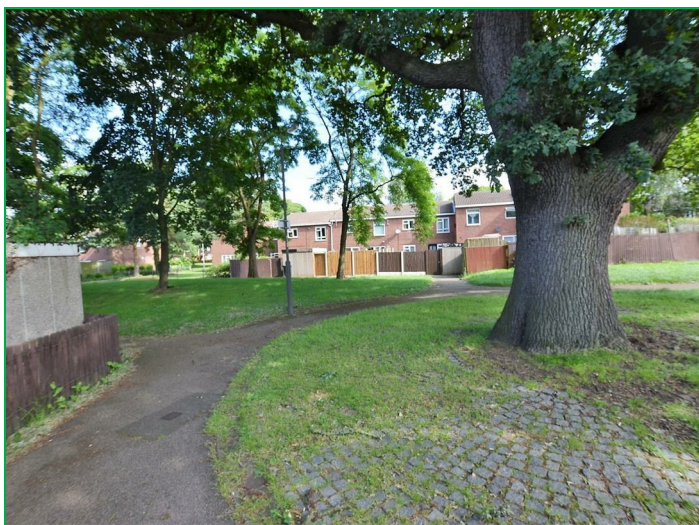


Airedale Walk, Alvaston, Derby
Offers over £78,000



37 Airedale Walk, Alvaston, Derby, DE24 0RQ

Offers over £78,000



Ideal first time buy or investment. Smart and stylish ground floor apartment situated in this popular residential locality, having been thoughtfully improved to offer well presented gas centrally heated and Upvc double glazed accommodation. In brief; reception hall, lounge / dining room, fitted kitchen, modern white bathroom suite with feature shower, double bedroom. Outside, the property overlooks a green area to the fore, has a small courtyard and communal car parking,

Canopied Storm Porch

To:-

Reception Hall



Having composite entrance door, natural oak laminated wood effect floor, recessed full height airing cupboard (housing the Gloworm wall mounted combination gas boiler providing instant domestic hot water and gas central heating), period style radiator and deep understairs storage cupboard.

Lounge/Dining Room 13'8 x 10'10 (4.17m x 3.30m)



Having natural oak laminated wood effect floor, television and media connection points, double radiator and UPVC double glazed window to rear aspect.

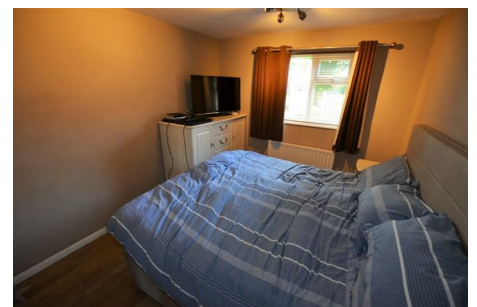
Fitted Kitchen 11'4 x 8' maximum (3.45m x 2.44m maximum)



Having a range of modern shaker style fitted wall and base cupboards

with granite effect laminated rolled edge working surfaces, inset stainless steel sink top with side drainer, hot and cold mixer tap, complimentary ceramic tiled splash backs with contrasting ceramic tiled floor, space for larder fridge and freezer, wall mounted extractor fan, radiator and UPVC double glazed window to front aspect.

Bedroom 13'8 x 9'3 (4.17m x 2.82m)



Having natural oak laminated wood effect floor, television connection point, radiator and UPVC double glazed window to rear aspect.

37 Airedale Walk, Alvaston, Derby, DE24 0RQ
Offers over £78,000



Bathroom



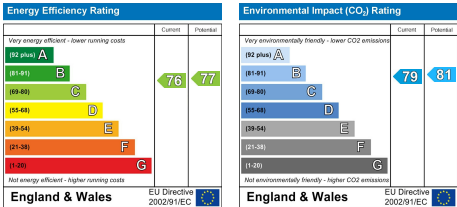
Having modern refitted contemporary white three piece suite comprising; concealed flush wc, wash hand basin recessed into a wood grain effect vanity unit, deep panelled bath with feature fixed head mains fed drench shower together with hand held shower attachment, complimentary ceramic tiled walls with contrasting ceramic tiled floor, chrome heated towel rail, fitted vanity mirror with back light, wall mounted extractor fan and UPVC opaque double glazed window to front aspect.

Outside

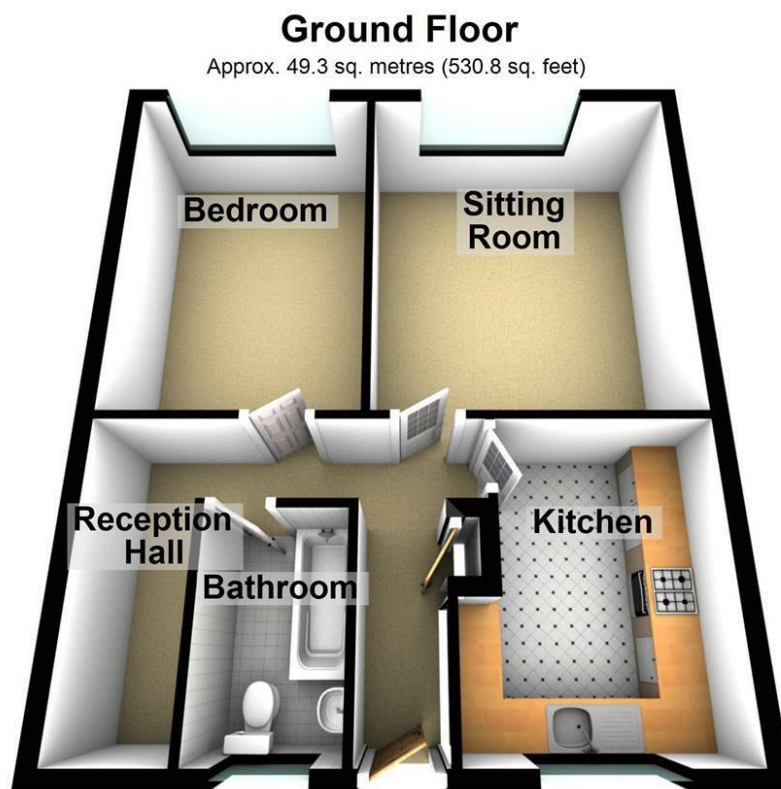
The property occupies a private position on Airedale Walk with communal car parking. To the front is a fenced and gated boundary with block paved court yard area which over looks a mature green area.

Please Note

The property is lease hold with 110 years remaining.



37 Airedale Walk, Alvaston, Derby, DE24 0RQ
Offers over £78,000



Total area: approx. 49.3 sq. metres (530.8 sq. feet)