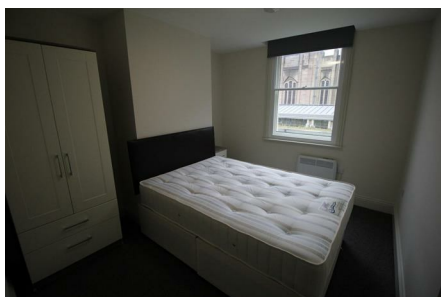


St. James Row, Sheffield, S1



£650 Per month



IMPRESSIVE 1 bed FURNISHED apartment situated within the Cathedral Quarter of the CITY CENTRE. The property has been finished to a high standard throughout with modern fixtures and fittings. The property is within walking distance of the many amenities in the city and transport links including the SUPERTRAM. Suitable for PROFESSIONALS, COUPLES or SINGLES, Available 8th of October, call us NOW to arrange a viewing!

- * 1 Bedroom Apartment
- * Offered Furnished
- * Internet is £15 per month, speed 20MB unlimited
- * Available 8th of October 2018
- * Call us NOW to arrange a viewing!



Energy Efficiency Rating		
	Current	Potential
Very energy efficient - lower running costs		
(92 plus) A		
(81-91) B		
(69-80) C	72	72
(55-68) D		
(39-54) E		
(21-38) F		
(1-20) G		
Not energy efficient - higher running costs		
England & Wales EU Directive 2002/91/EC		
Environmental Impact (CO ₂) Rating		
	Current	Potential
Very environmentally friendly - lower CO ₂ emissions		
(92 plus) A		
(81-91) B		
(69-80) C	75	75
(55-68) D		
(39-54) E		
(21-38) F		
(1-20) G		
Not environmentally friendly - higher CO ₂ emissions		
England & Wales EU Directive 2002/91/EC		