



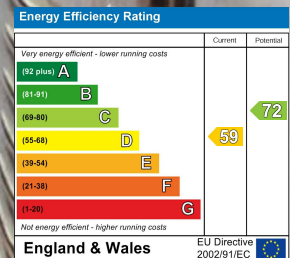
House - Semi-Detached

Park Drive, Manchester

£1,600 PCM

Customise to type text here

View more properties at homes4u.co.uk



Park Drive, Manchester, M16 0AH

£1,600 PCM

homes4uTM
for all your property needs

This semi-detached house has all double bedrooms, off road parking, a conservatory with dining table and bathroom equipped with a Jacuzzi bath. Located 0.1 miles away from Manley Park Primary School and 0.3 miles away from the popular Hilary Step bar.

On the ground floor there is a large hallway with two reception rooms on the right with leather sofas and patio doors leading onto a conservatory. There is also a fully tiled W/C and spacious kitchen with a double integrated oven and another door to the conservatory. Upstairs are four double bedrooms all with carpeted flooring, built-in storage and double beds. There is also a family bathroom with a corner Jacuzzi bath. Outside is a driveway for off-road parking and rear lawned garden with shed for additional storage.

Local transport links include the 86 bus route (0.2 miles away) and Chorlton Tram Stop (0.7 miles away). A Tesco is 0.8 miles away and local food & drink venues include The Hilary Step, Jam Street Café and the Nip and Tiddle. Local Schools include Manley Park and St Margarets.



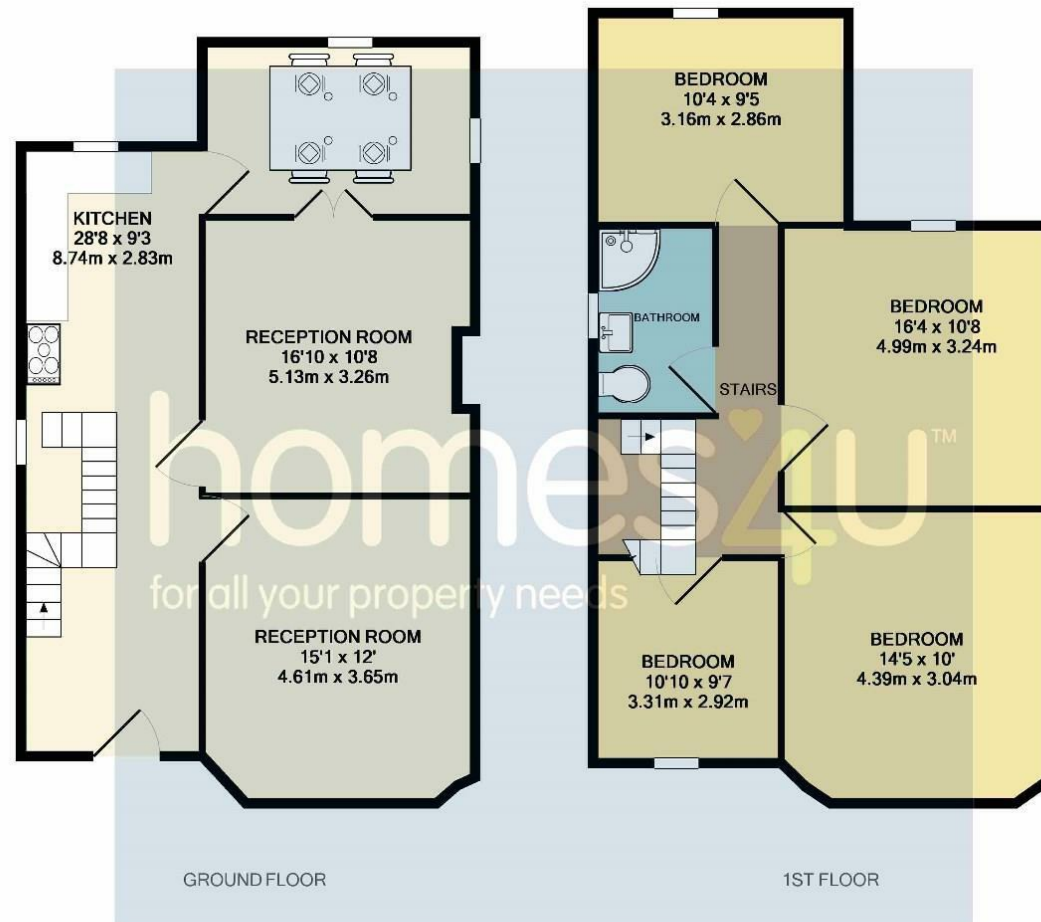
View all our properties at
[homes4u.co.uk](https://www.homes4u.co.uk)

Whilst we endeavour to ensure the accuracy of property details, we have not tested any apparatus, equipment, fixtures, fittings or services and so cannot verify that they are in working order or fit for purpose. Neither have we had sight of legal documents to verify Planning Permission or the Freehold or Leasehold status of any property. Buyers are advised to obtain verification from their solicitor and/or surveyor. Items shown in photographs are not included; they may be available by separate negotiation. Although we try to ensure the accuracy of measurements, we recommend if potential purchasers require accurate measurements to order flooring, or to ensure existing furniture will fit, they should take their own measurements.



Park Drive, Manchester, M16 0AH
£1,600 PCM

homes4uTM
for all your property needs



Whilst every attempt has been made to ensure the accuracy of the floor plan contained here, measurements of doors, windows, rooms and any other items are approximate and no responsibility is taken for any error, omission, or mis-statement. This plan is for illustrative purposes only and should be used as such by any prospective purchaser. The services, systems and appliances shown have not been tested and no guarantee as to their operability or efficiency can be given.
Made with Metropix ©2017

homes4uTM

City Centre and North Manchester

Sales Team 0161 236 8606
Rentals Team 0161 236 0202
city@homes4u.co.uk

South Manchester and Cheshire

Sales Team 0161 448 4805
Rentals Team 0161 448 0090
southmanchester@homes4u.co.uk

@homes4u

homes4umanchester

homes4u.manchester

homes4u

homes4u

View more properties at homes4u.co.uk