



- A Stunning Four Bedroom Family Home
- Beautifully Presented Throughout
- Three Bathrooms Including One En-Suite
- South Facing Rear Garden & Balcony

Bristol Gate, Brighton, BN2 5BD

Offers In Excess Of £800,000

This truly stunning and elegantly presented four bedroom, three storey family home is a must see! There's breath-taking views from all rooms as well as a south facing rear garden and balcony. This luxury property has been designed by top local architect and has been finished to an extremely high specification throughout, why not come and see it yourself?

(Internal photos may not be of actual property)



Property Description

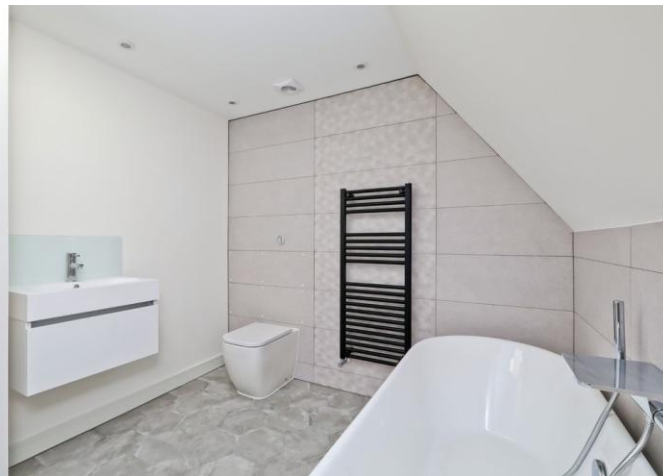
Benefiting from uninterrupted sea views from all floors, this luxury home is set back from a quiet cul de sac with ample off road parking and a beautiful, south facing rear garden. Also designed by a top local architect, the property has been finished to an exceptionally high standard throughout and is the perfect place for any family to simply unpack their bags and move in.

As you enter this dream property, the first thing you'll notice is the innovative interior design. Stylish floor tiles welcome you into a spacious entrance hall with an abundance of natural light. Spanning the full width of the rear of the house is the spectacular lounge/dining room. Not only does this room give you access to your beautiful rear terrace and garden but the ceilings are also 3 meters high allowing all of the direct south sunlight to stream through this amazing room. With large windows and sliding doors, this is the perfect entertaining space to take in your sea views! The spacious kitchen/diner offers room for a table and chairs for those morning teas. The sleek and modern design has high end integrated appliances, making this kitchen ready to use!

As you make your way to the first floor, the sense of space continues to impress. There is a spacious bedroom at the front of the property which has been stylishly decorated and benefits from open views. There's also a spa-like family bathroom with designer tiles! The spectacular master bedroom extends onto a sun drenched balcony with glorious views over your garden and onwards to the sea. As well as this, there is a chic en-suite shower room and fitted wardrobes! Onwards to the top floor and there are yet two more spacious bedrooms, both enjoying wonderful scenic views. This floor has its only luxurious bathroom suite with a skylight.

Added benefits to this already perfect home are off road parking, built in Sonos music system which is connected to ceiling speakers, UPVC energy efficient windows, Anodised aluminium doors and a MEGAFLOW heating system ensuring a strong flow of hot water wherever you are in the house.





Accommodation

GROUND FLOOR

ENTRANCE HALL

LOUNGE/DINER
15' x 15' (4.57m x 4.57m)

KITCHEN
15' 6" x 10' 3" (4.72m x 3.12m)

CLOAKROOM

FIRST FLOOR

LANDING

MASTER BEDROOM
15' x 12' 2" (4.57m x 3.71m)

ENSUITE SHOWER ROOM

BEDROOM THREE
10' 11" x 9' 4" (3.33m x 2.84m)

BATHROOM

SECOND FLOOR

LANDING

BEDROOM TWO
15' 2" x 15' (4.62m x 4.57m)

BEDROOM FOUR
9' 5" x 9' 2" (2.87m x 2.79m)

SHOWER ROOM

OUTSIDE

OFF ROAD PARKING

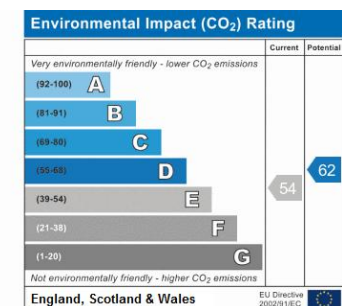
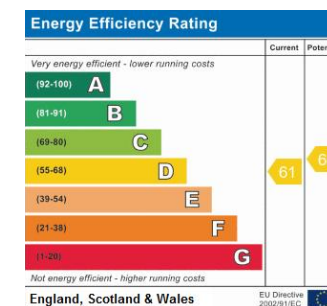
BALCONY

REAR GARDEN

Picture this...

After a long day at work is there any better way to switch off from the stresses of the world than to come home and pour yourself a glass of wine and relax in your very own private garden or on your private balcony?

Why not take a short stroll down the road to Brighton's famous seafront and enjoy an ice cream with the family on those lovely summer afternoons!



Agents Note: Whilst every care has been taken to prepare these sales particulars, they are for guidance purposes only. All measurements are approximate and for general guidance purposes only and whilst every care has been taken to ensure their accuracy, they should not be relied upon and potential buyers are advised to recheck the measurements.

112 Western Road
Brighton
East Sussex
BN1 2AB

www.phillipsandstill.co.uk
01273 771111
westernrd@phillipsandstill.co.uk

Mon-Fri: 8.30am - 6pm
Saturday: 9am - 4pm

