

Canford Cliffs

Tel: 01202 700771

canfordcliffs@keydrummond.com

www.keydrummond.com



EST. 1977

KEY DRUMMOND

ESTATE AGENTS



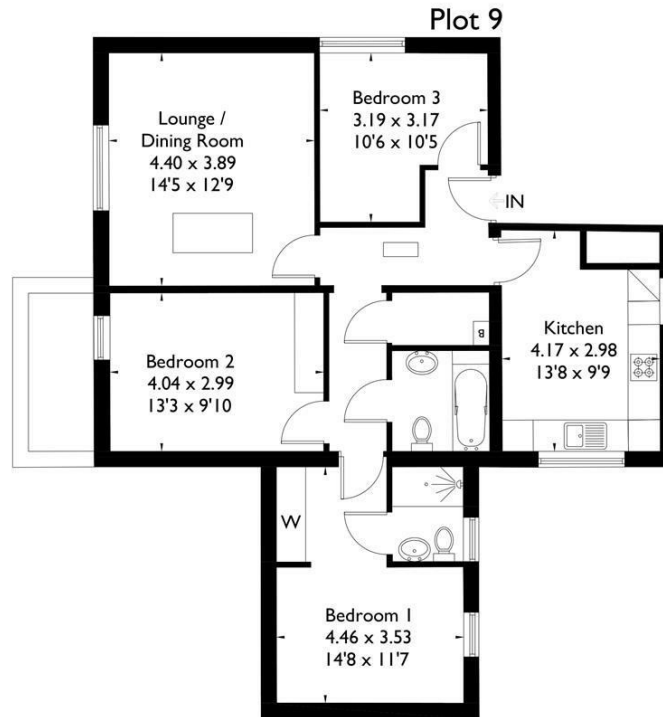
Flat 9 Sion House, 16 Commercial Road, Ashley Cross, Poole BH14 0JW £295,000 Leasehold

A newly converted THREE-BEDROOM apartment situated in the heart of ASHLEY CROSS VILLAGE AND SHOPS. The property boasts excellent accommodation and ALLOCATED PARKING. HELP TO BUY SCHEME.

- NEW DEVELOPMENT
- CHARACTER CONVERSION
- PRIVATE GARDENS TO APARTMENTS 2 & 7
- KITCHEN WORLD FITTED KITCHENS
- ASHLEY CROSS
- 3 BEDROOM APARTMENT
- HELP TO BUY SCHEME
- ALLOCATED PARKING

16 Commercial Road

Approximate Gross Internal Area
84.2 sq m / 906 sq ft



First Floor

Illustration for identification purposes only. Not to scale
Ref: 214132



Offices at:

19 Haven Road, Canford Cliffs, Poole, Dorset BH13 7LE
113 Commercial Road, Ashley Cross, Poole, BH14 0JD
14 Dorchester Road, Oakdale, Poole, BH15 3JY



All room dimensions given above are approximate measurements

These particulars are intended only to give a brief description of the property as a guide to prospective buyers. Accordingly:

- Their accuracy is not guaranteed and neither Key Drummond Estate Agents, nor the vendors accept any liability in respect of their contents.
- They do not constitute an offer of contract for sale.
- Any prospective purchasers should satisfy themselves by inspection or otherwise as to the correctness of any statements or information in these particulars. Please refer to the Agents if you require further clarification or information.

The Agent has not tested any apparatus, equipment, fixtures and fittings or services and so cannot verify that they are in working order or fit for the purpose. A buyer is advised to obtain verification from their Solicitor or Surveyor.

References to the Tenure of a Property are based on information supplied by the Seller. The Agent has not had sight of the title documents. A Buyer is advised to obtain verification from their Solicitor.