



24 Derby Wynd, Motherwell, Lanarkshire ML1 4GE
Offers over £75,000

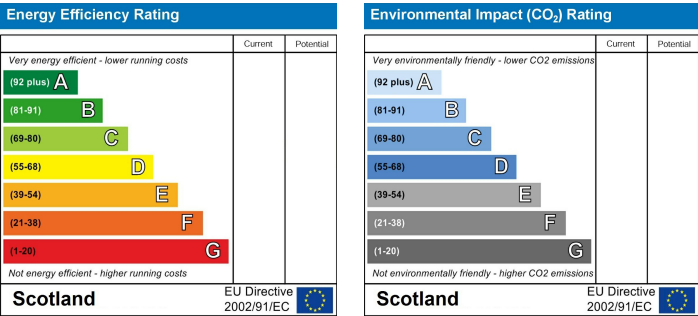


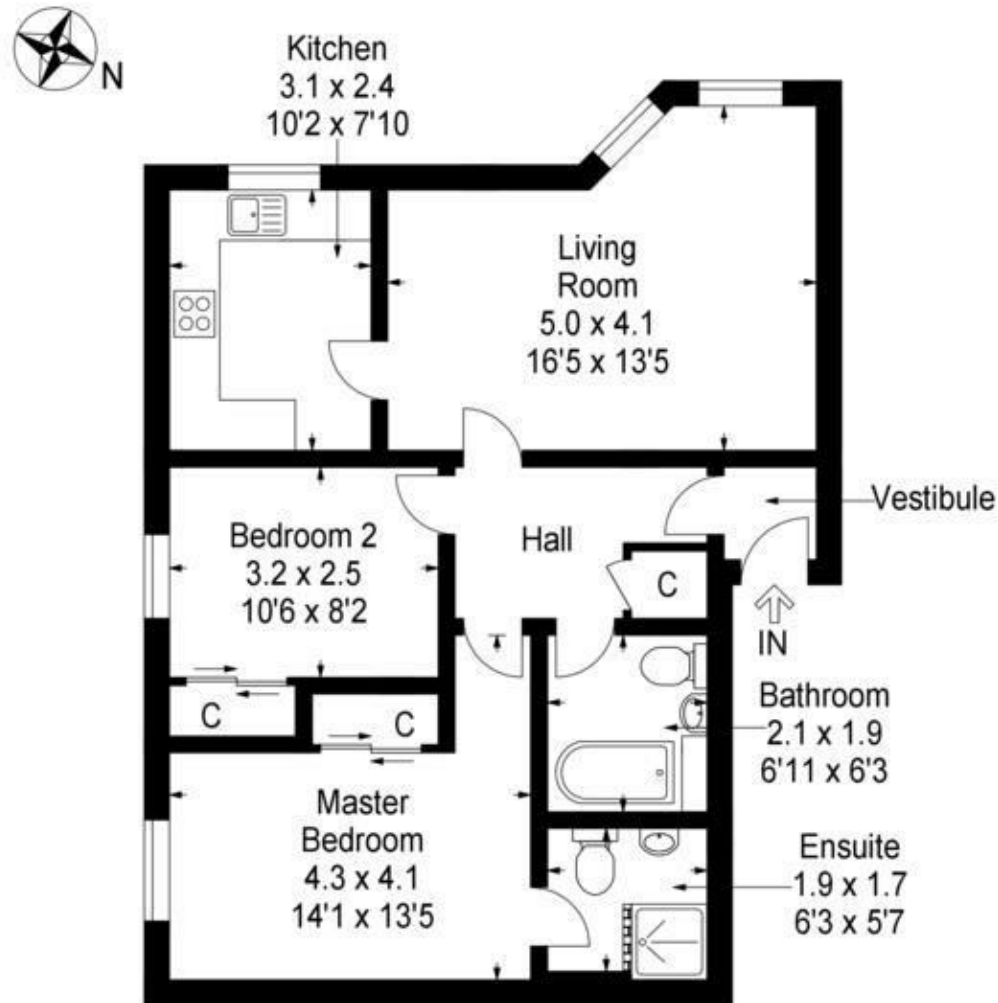
Empire Property are delighted to bring to the market this modern 2 bedroom flat located in Carfin. The property benefits from private residents parking and security is provided via a secure door entry system.

The property consists of; carpeted residential stairwell, reception hallway, bright and spacious lounge allowing ample space for dining, modern fitted kitchen, two double bedrooms with integrated wardrobes, master with en suite, and bathroom with three-piece suite and over bath shower.

The apartment is decorated throughout in neutral shades and is complimented by gas fire central heating with combination boiler and double-glazed windows throughout.

A Lovely modern flat!





This plan is for layout guidance only and is not drawn to scale. Whilst every care is taken in the preparation of this plan, please check all dimension and shapes before making any decision reliant upon them. All room dimensions taken through cupboard/wardrobes to wall surface where possible or to surfaces indicated by arrow heads. (ID 110927)

© VistaBee 2019

2 Stewarton Street, Wishaw, Scotland, ML2 8AN

Tel: 01698 364100

contact@empire-property.co.uk www.empire-property.co.uk



