

# The Dunnock

four bedroom detached house

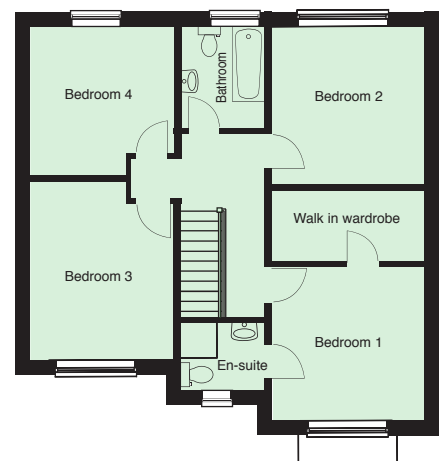
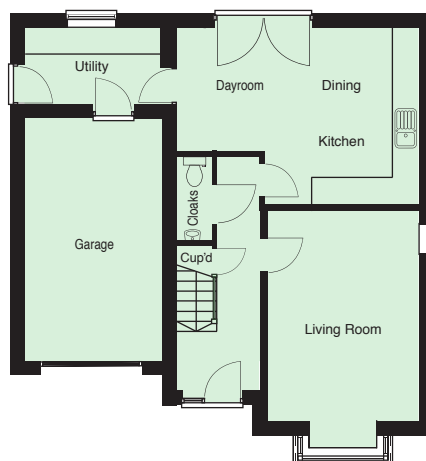


## GROUND FLOOR

Kitchen/Dining/Dayroom	3.99* x 5.57*	13'1" x 18'3"*
Utility	1.72 x 3.16	5'7" x 10'4"
Cloakroom	1.90 x 0.92	6'2" x 3'0"
Living Room	5.42* x 3.44	17'9" x 11'3"
Garage	5.46 x 2.96	17'10" x 9'8"

## FIRST FLOOR

Bedroom 1	3.44 x 3.22	11'3" x 10'6"
W-in W/robe	3.44 x 2.42	11'3" x 7'11"
En-suite	1.42 x 2.51	4'7" x 7'10"
Bedroom 2	2.99 x 3.46	9'9" x 11'4"
En-suite	1.56 x 2.03	5'1" x 6'7"
Bedroom 3	4.02* x 3.16*	13'2" x 10'4"*
Bedroom 4	3.36* x 3.16*	11'0" x 10'4"*
Bathroom	2.12 x 1.86	6'11" x 6'1"



\* Maximum dimension

brought to you by

**APPLEMONT**  
PROGRESSIVE & EXPERIENCED

[www.applemont.co.uk](http://www.applemont.co.uk)

Whilst every effort has been made to ensure the information is correct, this publication is designed specifically as a guide and we reserve the right to amend the plot layouts and specification as necessary and without notice. All room dimensions are approximate and should not be used to calculate carpet sizes or spacings for appliances or furniture. For more detailed house type floor plans depicting electrical layouts please ask the sales negotiator.

All photographs are shown for illustrative purposes only.  
The properties are depicted as computer generated illustrations - external finishes may vary.