

**SALES**  
242 Dedworth Rd  
Windsor  
Berkshire  
SL4 4JR  
  
Tel: 01753 621234  
Email: [post@horler.co.uk](mailto:post@horler.co.uk)

**SALES**  
1 Temple Cottage  
The Green  
Datchet, Berkshire  
SL3 9BJ  
  
Tel: 01753 546667  
Email: [mail@stephenuren.co.uk](mailto:mail@stephenuren.co.uk)

 **HORLER**



**7 Black Horse Close, Windsor, Berkshire, SL4 5QP**

**Offers in excess of £475,000**

Situated in a quiet cul-de-sac is this immaculately presented four bedroom townhouse. The property has spacious living accommodation over three floors, comprising of a fitted kitchen, two reception rooms, four good size bedrooms, a downstairs shower room, family bathroom and a private rear garden. Further benefits include driveway parking and being close to all local amenities. Viewing's are highly recommended!



## 7 Black Horse Close, Windsor, Berkshire, SL4 5QP

### Entrance

Through a UPVC and partially glazed front door into the entrance hall.

### Entrance hallway

With a small front aspect frosted window, radiator, solid wood flooring, two under stairs storage cupboards (one of which houses the electric meters), a UPVC and glazed door leading out to the rear garden and doors into:

### Reception room

A front aspect reception room with double glazed windows, fitted shutters, ample power points, solid wood flooring, cupboard housing boiler, spotlights, TV, BT and Virgin media points.

### Bedroom four

A rear aspect double bedroom with solid wood flooring, radiator, TV and ample power points.

### Shower room

A ground floor shower room with a rear aspect frosted window, a low level WC, walk in shower cubicle with a wall mounted shower and sliding door, a heated towel rail, wall mounted hand wash basin and fully tiled walls and flooring.

### Stairs to first floor

### Kitchen/Breakfast room

A rear aspect kitchen/breakfast room with wall to wall double glazed windows. Fitted with a range of eye and base level units with a complimentary stone effect worktop, inset one and a half stainless steel sink, integrated appliances including a washing machine, BEKO electric double oven with four ring induction hob, extractor fan, washing machine, dishwasher and fridge and space for a freestanding fridge freezer. There is also a tiled splash back, tile flooring and splash back, a radiator, spotlighting, under cupboard lighting, ample power points and space for a dining table.

### Lounge/Second reception room

A front aspect room with wall to wall double glazed windows, radiator, fitted window shutters, TV, internet and Virgin media points, ample power points, solid wood flooring and a door leading to:

### Stairs to second floor / landing

With access to the loft with a pull down ladder, lighting and boarded for storage. Additional storage cupboard and access to master bedroom, bedroom two, bedroom three and the family bathroom.

### Master bedroom

A double bedroom with a front aspect window, radiator, ample power points, fitted shutters, TV, Virgin and internet points. There is also large fitted wardrobes with shelving, hanger space and mirrored doors.

### Bedroom two

A rear aspect room with a double glazed window, radiator, fitted shutters, TV and ample power points.

### Bedroom three

A front aspect room with ample power points, TV point, radiator, under bed fitted storage and fitted shutters.

### Bathroom

A rear aspect bathroom that is fully tiled. Comprising of panel enclosed bath with wall mounted shower, glass shower screen, a vanity hand wash basin with storage below, low level WC, heated towel rail and a rear aspect frosted window. There is also a TV point.

### Garden

A timber fence enclosed rear garden that is mainly laid to lawn with a decked area directly behind the property, a paved patio area to the rear of the garden and a timber shed.

### Front of property

With driveway parking for 2-3 cars.

### Legal note

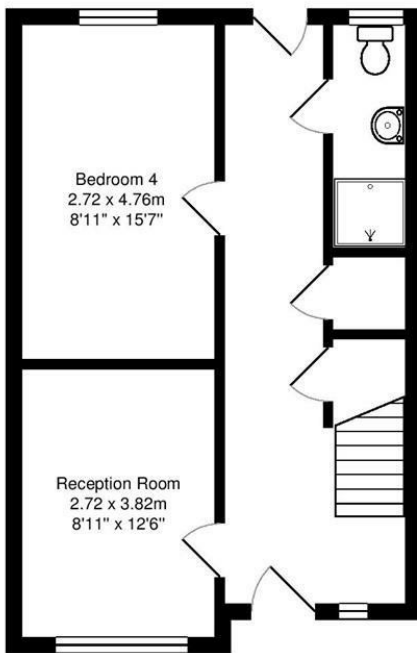
\*\*Although these particulars are thought to be materially correct, their accuracy cannot be guaranteed and they do not form part of any contract.\*\*



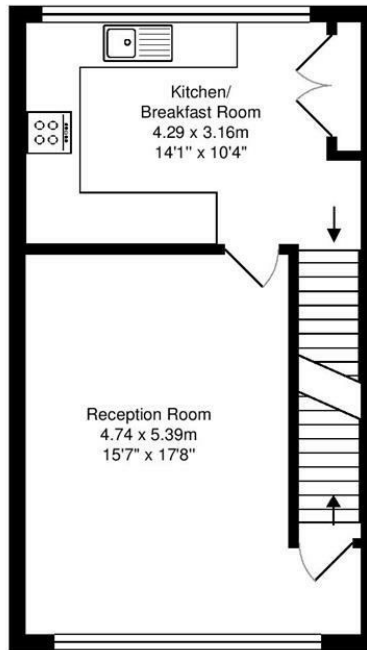
7 Black Horse Close, Windsor, Berkshire, SL4 5QP



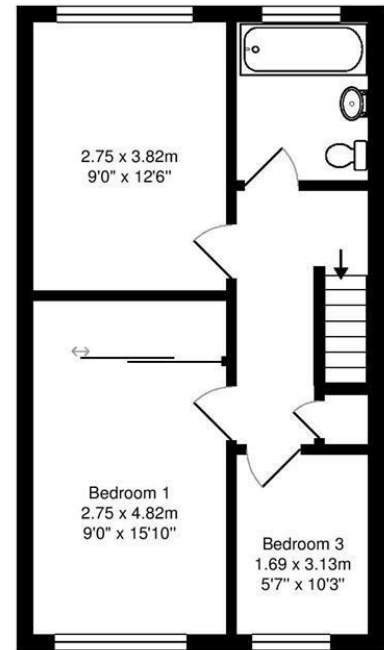




Ground Floor



First Floor



Second Floor

Approx gross internal floor area 1308sq ft (121.5 sq.m)  
All measurements are approximate and for display purposes only.

