



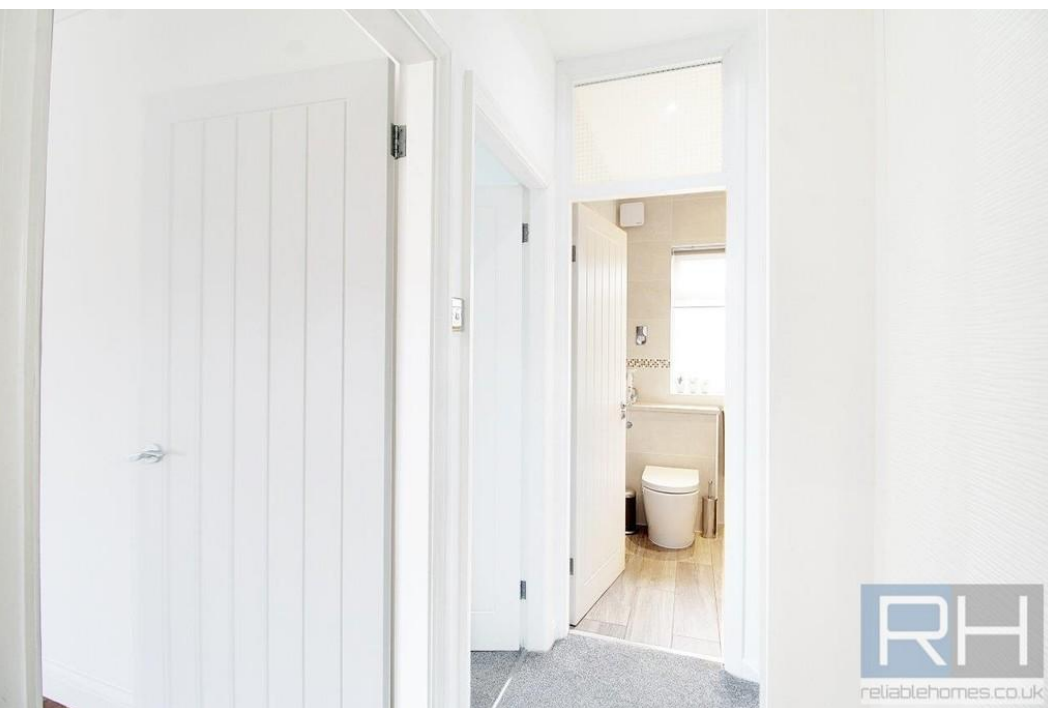
Lavender Hill, Enfield, EN2

- First floor maisonette
- Private garden
- Newly refurbished

- Walking distance to Gordon Hill Station
- Offered partly furnished
- Gas Central Heating & Double glazing

£1,175 pcm
EPC Rating '62'





* FIRST FLOOR MAISONETTE WITH GARDEN * Reliable Homes are delighted to offer this stunning first floor maisonette with access to a private garden. Conveniently located on Lavender Hill with Gordon Hill Station just moment away and a range of local amenities on your doorstep. The property recently underwent refurbishment throughout to a very high standard with a modern kitchen and bathroom. Available immediately and offered partly furnished.

37A Broadway Parade
Crouch End
London
N8 9DB

www.reliablehomes.co.uk
office@reliablehomes.co.uk
020 3640 8888

Agents Note: Whilst every care has been taken to prepare these sales particulars, they are for guidance purposes only. All measurements are approximate and for general guidance purposes only and whilst every care has been taken to ensure their accuracy, they should not be relied upon and potential buyers are advised to recheck the measurements