

**Holmwood Close,**  
Winterbourne, Bristol, BS36 1JZ

Rent: £1,200 pcm



# Property Features

---

- Extended Semi Detached House
- Unfurnished
- 2 Reception Rooms
- 4 Bedrooms
- Pets Considered
- Garage
- Available Immediately
- Cul-De-Sac Location

## Full Description

---

ENTRANCE PORCH

ENTRANCE HALL

LOUNGE

17' 5" x 12' 3" (5.31m x 3.73m)

DINING ROOM

16' x 12' 2" (4.88m x 3.71m)

KITCHEN

11' x 8' 10" (3.35m x 2.69m)

CLOAKROOM

FIRST FLOOR LANDING

MASTER BEDROOM

11' 8" x 8' 10" (3.56m x 2.69m)

Front aspect.

BEDROOM 2

10' 9" x 9' 8" (3.28m x 2.95m)

BEDROOM 3

7' 6" x 7' 5" (2.29m x 2.26m)

BATHROOM

SECOND FLOOR LANDING

BEDROOM 4

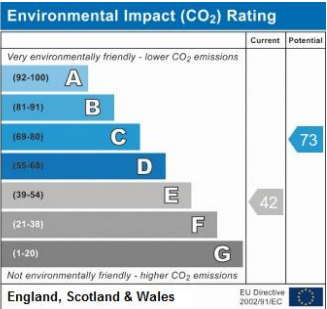
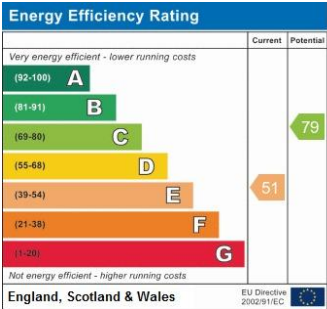
11' 6" x 10' 2" (3.51m x 3.1m)

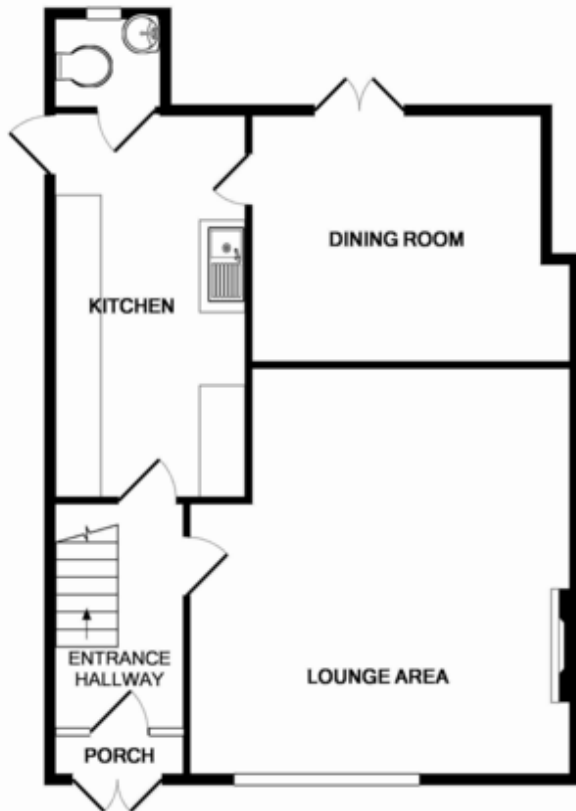


FRONT GARDEN  
Off street parking

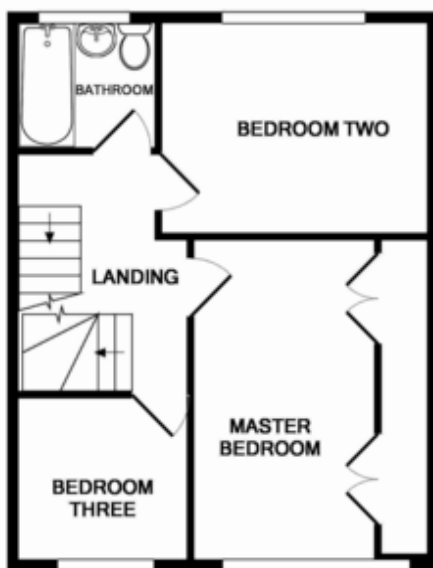
GARAGE

REAR GARDEN





GROUND FLOOR



FIRST FLOOR

4 Flaxpits Lane  
Winterbourne  
Bristol  
Avon  
BS36 1JX

[www.aj-homes.co.uk](http://www.aj-homes.co.uk)  
[info@aj-homes.co.uk](mailto:info@aj-homes.co.uk)  
01454 252140

Agents Note: Whilst every care has been taken to prepare these sales particulars, they are for guidance purposes only. All measurements are approximate are for general guidance purposes only and whilst every care has been taken to ensure their accuracy, they should not be relied upon and potential buyers are advised to recheck the measurements