



**133 North Road**  
Stoke Gifford, Bristol, , BS34 8PE

Rent: £1,200 pcm



# Property Summary



## HALLWAY DINING ROOM

15' 01" x 10' 00" (4.6m x 3.05m)

## KITCHEN

15' 09" x 7' 10" (4.8m x 2.39m) White goods include cooker, fridge & freezer & washing machine.

## LIVING ROOM

15' 07" x 11' 11" (4.75m x 3.63m) Wood burning stove

## LANDING

## BEDROOM 1

9' 10" x 9' 05" (3m x 2.87m) Fitted wardrobes

## ENSUITE

With shower, w/c and hand wash basin.

## BEDROOM 2

15' 04" max x 10' 01" max (4.67m x 3.07m)

## BEDROOM 3

8' 06" x 7' 01" (2.59m x 2.16m)

## BATHROOM

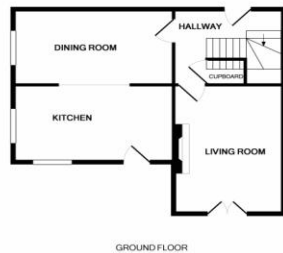
bath with shower over, w/c and pedestal hand wash basin.

## GARDEN

## GARDEN ROOM

Part converted garage currently used as a studio included heating and internet connection. The front section (about 4 ft) of the garage will not be available for use.

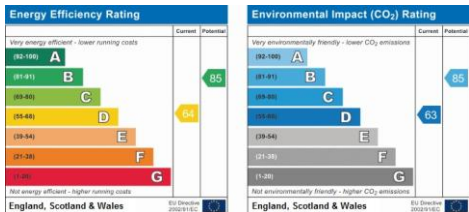
- Three Bedroom Cottage
- Two Reception Rooms
- Garden
- Drive way and Parking
- Garden / Study Room
- Available 21st November 2018
- No Pet Smokers or DSs



GROUND FLOOR



1ST FLOOR



4 Flaxpits Lane  
Winterbourne  
Bristol  
Avon  
BS36 1JX

[www.aj-homes.co.uk](http://www.aj-homes.co.uk)  
[info@aj-homes.co.uk](mailto:info@aj-homes.co.uk)  
01454 252140

Agents Note: Whilst every care has been taken to prepare these sales particulars, they are for guidance purposes only. All measurements are approximate are for general guidance purposes only and whilst every care has been taken to ensure their accuracy, they should not be relied upon and potential buyers are advised to recheck the measurements