

2 Hartmoor Gardens, Bournemouth, BH10 4JE

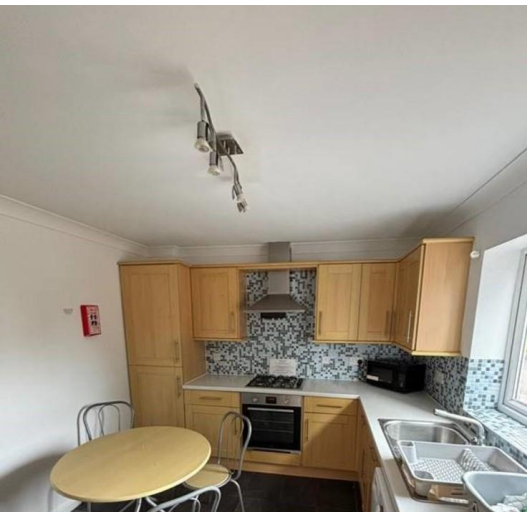
4 Bedrooms

house & son

www.houseandson.net

01202 244844

berat.y@houseandson.net



4 BEDROOMS

FURNISHED

GAS CENTRAL  
HEATING

DOUBLE GLAZED

PRIVATE REAR  
GARDEN

PARKING FOR 1  
CAR

### Description:

ENSBURY PARK: A FOUR BEDROOM semi detached NEWLY BUILT student house offered FURNISHED with. Gas central heating & double glazed. LARGE KITCHEN/DINER with integrated fridge/freezer, washing machine, gas hob & electric oven. SEPARATE DOWNSTAIRS WC. Bathroom with shower attachment, wash hand basin & WC. PRIVATE REAR GARDEN to include a shed & side access. OFF ROAD PARKING FOR 1 CAR. Walking distance to the uni. \*\*\*LOW ENERGY BILLS\*\*\* Landlord Self Manages. 11 MONTH TENANCY. Council Tax Band C.

£2,100 pcm

Available 10th August 2026

Tenancy Info: 11 MONTHS

Deposit: £2423

Council Tax: Band C

EPC: C77