



Oakwood Gardens,
Coalpit Heath, Bristol, BS36 2NB

Price: OIRO £500,000

Property Features

- BRAND NEW DETACHED HOUSE
- Four Bedrooms
- 25' Lounge
- 19' Kitchen/Dining Room
- Cloak room
- En-Suite to Master Bedroom
- Four Piece Family Bathroom
- Double Glazed Throughout
- Underfloor & Gas Central Heating

Full Description

A brand new house built to a high specification in an electric gated plot in a popular road in Coalpit Heath. The accommodation briefly comprises of a porch, entrance hallway, cloakroom, kitchen/dining room with modern high gloss units and 'quartz' work-surfaces and up-stands, integrated appliances including fridge, freezer, washing machine, dishwasher, two electric ovens and a five ring gas hob with extractor fan. Lounge measuring 25' with opening for a wood-burner. Upstairs the property comprises of four bedrooms, (master en-suite with walk in double shower cubicle) and family bathroom with bath and separate shower cubicle. The property further benefits from under-floor heating to the ground floor and gas central heating to the first floor. Outside the plot is fully enclosed with lawned and planted areas and block paved area providing off street parking. Early viewing recommended to avoid disappointment!

ENTRANCE PORCH

Double glazed window and door to the front, wood effect flooring, lighting, part glazed door to the entrance hall.

ENTRANCE HALL

Stairs rising to the first floor landing, smoke detector, ceiling spot lighting, built in storage cupboard housing consumer unit and under floor heating controls.

CLOAKROOM

Double glazed obscure window to the rear, low low level w.c., vanity wash hand basin, wood effect flooring, extractor fan.



LOUNGE

25' 11" x 13' 8" (7.9m x 4.17m)

Double glazed window to the front, double glazed French doors to the rear, fireplace opening with space for wood-burner, television point, telephone point.

KITCHEN/DINING ROOM

19' 4" x 10' 2" (5.89m x 3.1m)

Double glazed window to the front, double glazed bi-fold doors to the rear, fitted with a range of high gloss wall and base units with quartz work-surfaces and up-stands over, under cupboard and under work-surface lighting, two built in electric ovens with five ring gas hob and extractor over, integrated washing machine, integrated fridge, integrated freezer, integrated dishwasher, one and a half bowl stainless steel inset sink with mixer tap over, built in wine cooler, television point, telephone point, breakfast bar and space for a table, smoke detector.

LANDING

Ceiling spot lighting, Double glazed Velux window to the rear, built in airing cupboard housing boiler.

BEDROOM ONE

14' 2" x 10' 2" (4.32m x 3.1m)

Double glazed window to the front, radiator, television point, access to the loft space.

EN-SUITE

Double glazed Velux window to the rear, walk in double shower cubicle with shower over and hand held shower, low level w.c., vanity wash hand basin, part tiled walls, ceiling spot lighting, heated towel rail, extractor, wall mounted mirror with light, tiled flooring.

BEDROOM TWO

13' 8" x 8' (4.17m x 2.44m)

Double glazed window to the front, radiator, television point.

BEDROOM THREE

12' 5" x 7' 2" (3.78m x 2.18m)

Double glazed Velux window to the rear, radiator, television point.

BEDROOM FOUR

9' 2" x 6' 2" (2.79m x 1.88m)

Double glazed Velux window to the rear, radiator, television point.

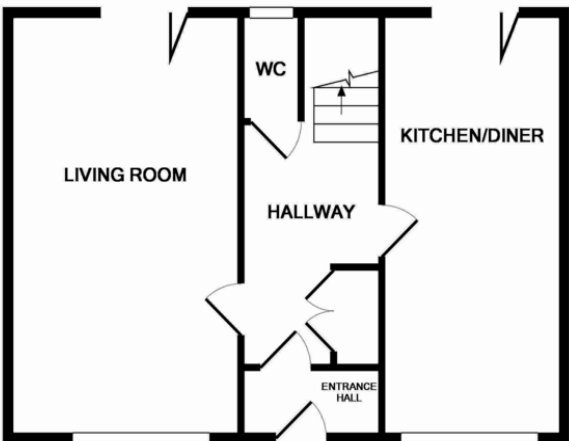
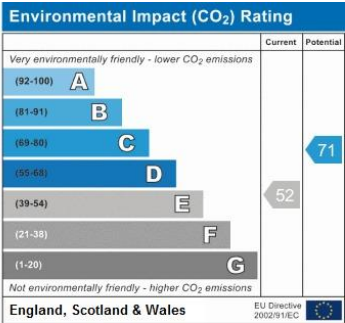
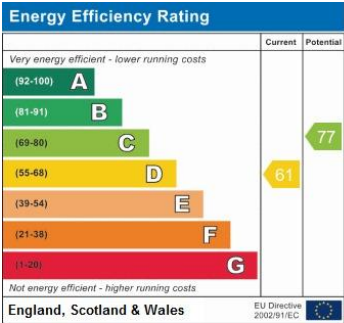


BATHROOM

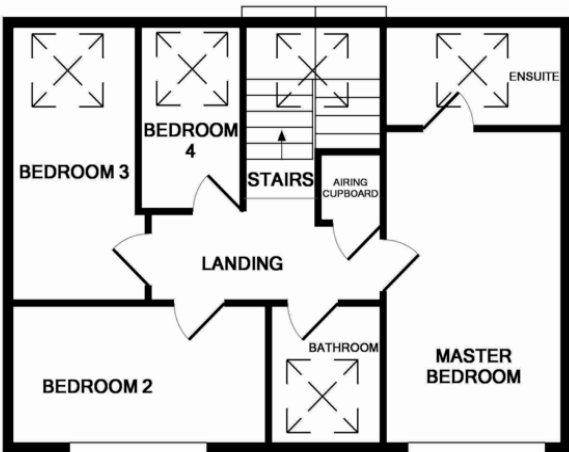
Double glazed window to the front, built in corner shower cubicle with shower over, low level w.c., panelled bath, tiled flooring, vanity wash hand basin, wall mounted mirror with lighting, extractor fan, ceiling spot lighting, part tiled walls.

OUTSIDE

Accessed via electric gates, fully enclosed, block paved area providing off street parking, lawned and planted areas.



GROUND FLOOR



1ST FLOOR

Measurements are approximate. Not to scale. Illustrative purposes only
Made with Metropix ©2018

4 Flaxpits Lane
Winterbourne
Bristol
Avon
BS36 1JX

www.aj-homes.co.uk
info@aj-homes.co.uk
01454 252140

Agents Note: Whilst every care has been taken to prepare these sales particulars, they are for guidance purposes only. All measurements are approximate are for general guidance purposes only and whilst every care has been taken to ensure their accuracy, they should not be relied upon and potential buyers are advised to recheck the measurements