



**Mountbatten Close,  
Yate, Bristol, BS37 5TE**

**Rent: £900 pcm**

# Property Features

- Extended Semi Detached House
- 2 Double Bedrooms
- 2 Separate Reception Rooms
- Shower Room & Bathroom
- Kitchen With White Goods
- Unfurnished
- Off Street Parking
- Available December 2018
- No Smokers
- NO PETS

## Full Description

This exceptional 2 bedroomed extended Semi detached home offered for rent in immaculate condition boasting 2 reception rooms with open plan kitchen, 2 double bedrooms, shower room and bathroom. The property is unfurnished with white goods and available in December 2018 an early viewing is essential to appreciate this fine home.

### ENTRANCE HALL

### LIVING ROOM

17' 4" x 12' 7" (5.28m x 3.84m)

### KITCHEN

12' 7" x 8' 10" (3.84m x 2.69m)

### BREAKFAST ROOM

17' 3" x 10' 5" (5.26m x 3.18m)

### SHOWER ROOM

### LANDING

### MASTER BEDROOM

12' 7" x 9' (3.84m x 2.74m)

### BEDROOM 2

12' 7" x 9' (3.84m x 2.74m)

Front aspect. Built in double wardrobe.

### BATHROOM

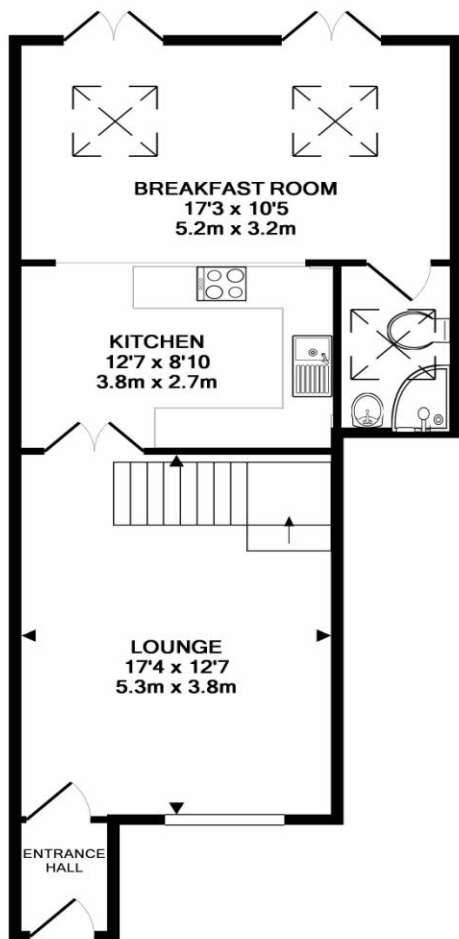
### FRONT GARDEN & OFF STREET PARKING

### REAR GARDEN

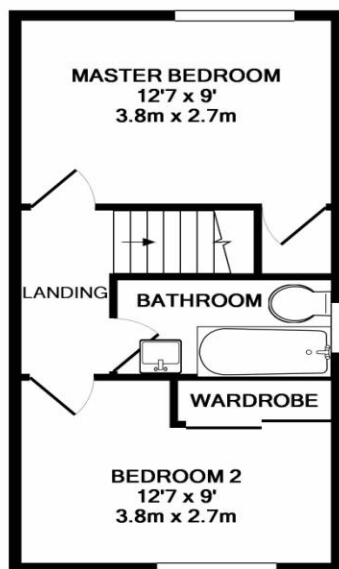








GROUND FLOOR



1ST FLOOR

Measurements are approximate. Not to scale. Illustrative purposes only  
Made with Metropix ©2018

4 Flaxpits Lane  
Winterbourne  
Bristol  
Avon  
BS36 1JX

[www.aj-homes.co.uk](http://www.aj-homes.co.uk)  
[info@aj-homes.co.uk](mailto:info@aj-homes.co.uk)  
01454 252140

Agents Note: Whilst every care has been taken to prepare these sales particulars, they are for guidance purposes only. All measurements are approximate are for general guidance purposes only and whilst every care has been taken to ensure their accuracy, they should not be relied upon and potential buyers are advised to recheck the measurements