



Challenge Court, Leatherhead, Surrey, KT22 7GS

Available Early to Mid-September 2024

£1,550 pcm

Challenge Court, Leatherhead, Surrey, KT22 7GS

- AVAILABLE MID SEPTEMBER 2024
- UNFURNISHED
- CONTEMPORARY SECOND FLOOR TWO BEDROOM APARTMENT
- TWO BATHROOMS
- UNDERFLOOR HEATING

- HIGH CEILINGS
- KITCHEN WITH INTEGRATED APPLIANCES
- OPEN PLAN KITCHEN / LIVING AREA
- ALLOCATED PARKING
- CLOSE TO LEATHERHEAD TOWN CENTRE AND MAIN LINE STATION



1-3 Church Street, Leatherhead
Surrey, KT22 8DN

Tel 01372 360444

lettings@patrickgardner.com

www.patrickgardner.com

THE PROPERTY

Contemporary two-bedroom, two bathroom second floor apartment close to Leatherhead town centre and main line station. With underfloor heating, high ceilings, open plan kitchen / living area, modern kitchen with integrated appliances and allocated parking

KITCHEN/LIVING ROOM

Bright and airy open plan Living/Kitchen with space for dining table and chairs. Double aspect. Fitted appliances

MASTER BEDROOM

Good sized double bedroom with tall ceilings. Door to En-suite

ENSUITE

Modern suite with Bath with shower over, WC, wash hand basin and heated towel rail

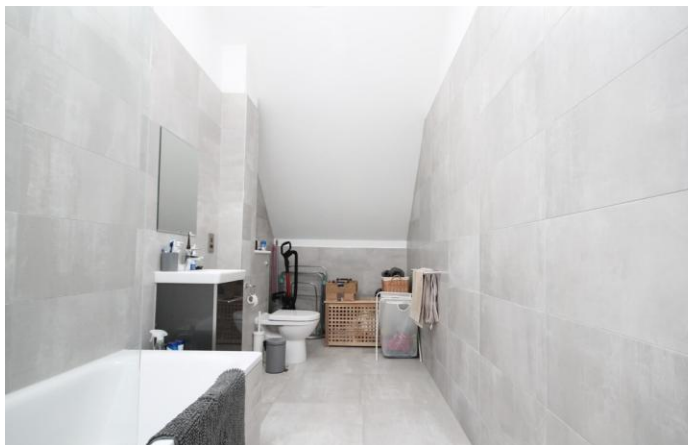
BEDROOM TWO

Double bedroom with tall ceilings

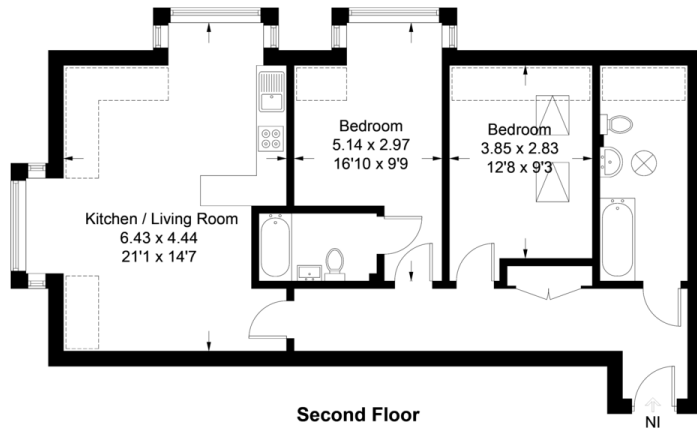
MASTER BATHROOM

Large room with Bath with shower over, WC and wash hand basin

EPC Band B



Approximate Gross Internal Area = 75.9 sq m / 817 sq ft



Second Floor

This plan is for layout guidance only. Not drawn to scale unless stated. Windows and door openings are approximate. Whilst every care is taken in the preparation of this plan, please check all dimensions, shapes and compass bearings before making decisions reliant upon them. (ID381416)
www.bagshawandhardy.com © 2017

INFORMATION FOR TENANTS

Holding Deposit

We require one weeks' rental, payable by bank transfer as a holding deposit to secure a property. Once we have received your holding deposit, current legislation stipulates that the necessary paperwork should be completed by all parties within 15 days or such longer period as might be agreed.

Should your offer be agreed and you decide to proceed with a tenancy we require:

A refundable holding deposit of one weeks' rent at the beginning of negotiations. This amount will be deducted from your first months' rent prior to the commencement of the tenancy. Please be aware that should you withdraw from the negotiations, or be unable to provide suitable references this amount is **non-refundable**. Please further note that until this initial amount is paid the property may continue to be offered for rental.

References

We use the referencing company, Rightmove Tenant Services. The most straightforward way to complete the reference form is via an online link that your Lettings Negotiator will send by e-mail.

Rent

Rent will be paid monthly in advance by bankers' standing order set up to leave your account 3 days before the rent due date in order to allow funds to clear.

Deposit

A deposit of five weeks rental is held during the tenancy against damage and dilapidation Patrick Gardner & Co. are members of the Tenancy Deposit Scheme to safeguard your deposit.

Inventory and schedule of condition

A professional inventory clerk will check you into the property at the beginning of the tenancy. The charge for this is borne by the Landlord.

