





2



1



1

- **Stunning Quayside Apartment**
- **Master En-suite**
- **Lift Access**
- **Two Bedrooms**
- **Spacious Rooms**
- **City Centre Location**
- **Allocated Parking**
- **Call 0191 487 0800**

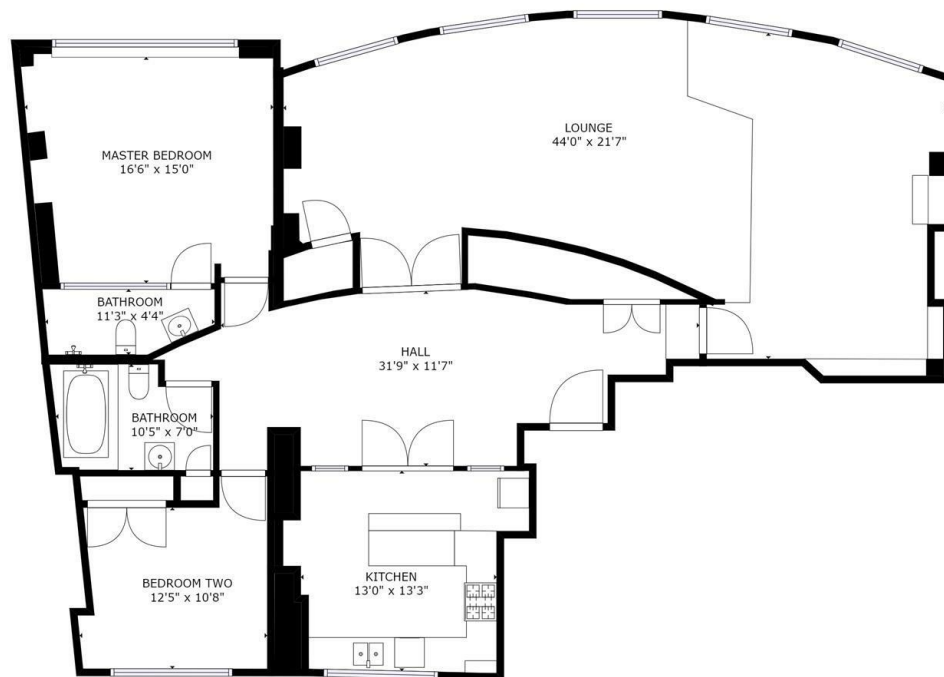




\*\*\*360° VIRTUAL REALITY TOUR AVAILABLE ON THIS PROPERTY... "IT'S AMAZING..IT'S LIKE HAVING AN OPEN HOUSE 24/7!\*\*\*

Offered for sale with no upper chain this well presented spacious apartment must be viewed. The apartment will appeal to a variety of buyers and is situated in heart of Newcastle city centre. This unique apartment briefly comprises:- lift access to the third floor, spacious entrance hall with storage, double doors leading to breakfasting kitchen with centre island, large open plan feature lounge diner with panoramic views overlooking the quayside, master bedroom with en-suite, second bedroom and a bathroom. The property benefits from gas central heating and secondary double glazing. Externally there is an allocated parking space to the rear of the property. Viewings are highly recommended to appreciate the accommodation on offer.





FLOOR 1

GROSS INTERNAL AREA  
FLOOR 1: 1901 sq ft  
TOTAL: 1901 sq ft  
SIZES AND DIMENSIONS ARE APPROXIMATE, ACTUAL MAY VARY.

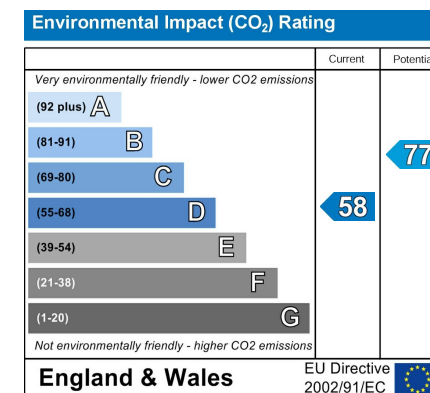
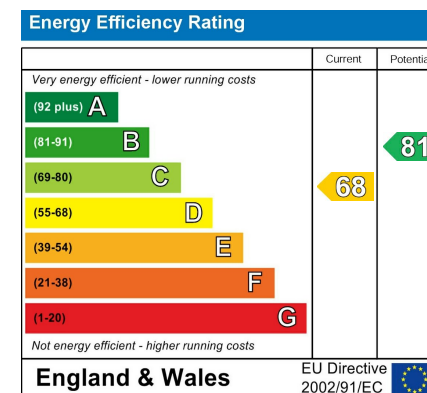
POWERED BY  
matterport

Lounge 44'0" x 21'7" (13.42 x 6.58)

Kitchen 13'0" x 13'3" (3.97 x 4.05)

Bedroom One 16'6" x 15'0" (5.05 x 4.58)

Bedroom Two 12'5" x 10'8" (3.80 x 3.27)



## The difference between house and home

You may download, store and use the material for your own personal use and research. You may not republish, retransmit, redistribute or otherwise make the material available to any party or make the same available on any website, online service or bulletin board of your own or of any other party or make the same available in hard copy or in any other media without the website owner's express prior written consent. The website owner's copyright must remain on all reproductions of material taken from this website.

Gosforth 0191 236 2070  
 Newcastle 0191 284 4050  
 Forest Hall 0191 605 3134  
 High Heaton 0191 270 1122  
 Low Fell 0191 487 0800  
 Tynemouth 0191 257 2000  
 Whitley Bay 0191 251 3000  
 Property Management Centre 0191 236 2680



www.janforsterestates.com

