

**The Velvet Mills Lilycroft Road, Bradford, West Yorkshire BD9 5BN**  
**£480 PCM**

This furnished apartment is flooded with light from the large windows. With a living space of 521 Sq Ft, this apartment is not to be missed. Benefiting from an open plan living and kitchen area, fitted with brand new appliances and furnishings, a large bedroom, and a sizeable bathroom with bath tub and shower. The apartment is bursting with character; the exposed brick walls, high ceilings, structural beams and wooden floors all contribute to the appealing aesthetics. Fees May Apply - Contact Locate Homes For Further Information.

**Locate**  
The Property Experts

**Locate Properties UK LTD**

29-31 North Parade, Bradford, West Yorkshire, BD1 3JL

t. +44 (0) 01274 720 900



@locatehomesbfd

e. info@locatehomes.co.uk

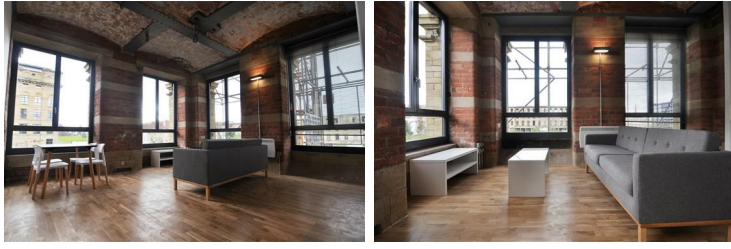


[www.locatehomes.co.uk](http://www.locatehomes.co.uk)

Registered in England & Wales No. 5161728

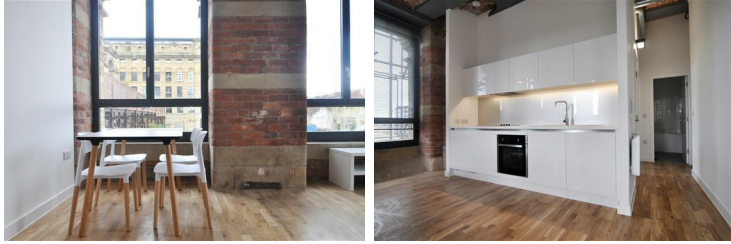
## Entrance

## Living Room



A corner apartment boasting lots of natural light, the high ceilings and exposed brick walls bring this space to life. Fully furnished with brand new modern furniture.

## Kitchen



The balance of the juxtaposition between the old and the new is brought together in the kitchen, where glossy units meet exposed ceilings. With plenty of storage and integrated appliances, this modern kitchen has everything you will need.

## Bedroom



Bathed in light with views across the city, this airy bedroom comes complete with a brand new bed and mattress, a wardrobe and bedside tables.

## Bathroom



A modern, large three piece suite with mixer shower and glass shower screen.





Energy Efficiency Rating		
	Current	Potential
Very energy efficient - lower running costs		
(92 plus) <b>A</b>		
(81-91) <b>B</b>		
(69-80) <b>C</b>		
(55-68) <b>D</b>	55	55
(39-54) <b>E</b>		
(21-38) <b>F</b>		
(1-20) <b>G</b>		
Not energy efficient - higher running costs		
<b>England &amp; Wales</b>		EU Directive 2002/91/EC
Environmental Impact (CO <sub>2</sub> ) Rating		
	Current	Potential
Very environmentally friendly - lower CO <sub>2</sub> emissions		
(92 plus) <b>A</b>		
(81-91) <b>B</b>		
(69-80) <b>C</b>		
(55-68) <b>D</b>		
(39-54) <b>E</b>		
(21-38) <b>F</b>		
(1-20) <b>G</b>		
Not environmentally friendly - higher CO <sub>2</sub> emissions		
<b>England &amp; Wales</b>		EU Directive 2002/91/EC