



ARCH LIVING

[www.archliving.co.uk](http://www.archliving.co.uk)

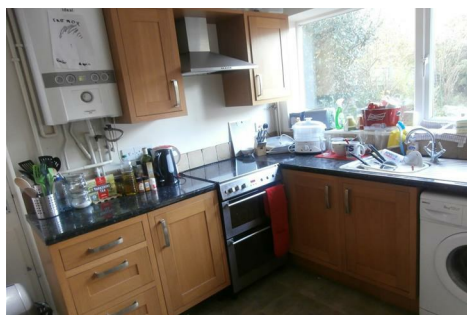


## 16A Elmfield Avenue, Leicester, Leicestershire LE2 1RD

**£665 Per week**

2019-2020 STUDENT ACCOMMODATION, THIS PROPERTY IS BILLS INCLUSIVE (GAS, ELECTRIC and WATER), HALF JULY RENT, ZERO DEPOSIT

STUNNING 7 BEDROOM STUDENT PROPERTY AVAILABLE. We are delighted to present this homely student house located on the border of Stoneygate and Evington. This property benefits from 6 Double bedrooms and a good sized single bedroom. Only 10 minutes from the Leicester University. Close to all local bus routes and local amenities. The properties features a drive way along with a large kitchen diner.



127 Clarendon Park Road, Leicester, Leicestershire LE2 3AJ  
T: 0116 270 6699  
[lettings@archliving.co.uk](mailto:lettings@archliving.co.uk)

ARCH

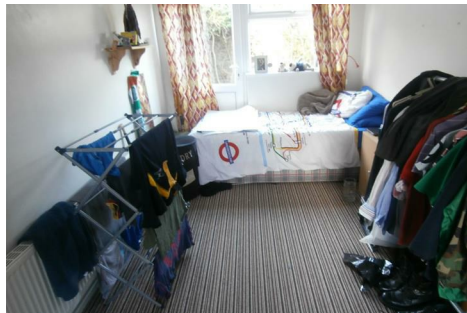


ARCH LIVING

[www.archliving.co.uk](http://www.archliving.co.uk)

Energy Efficiency Rating		
	Current	Potential
Very energy efficient - lower running costs		
(92 plus) A		
(81-91) B		
(69-80) C		
(55-68) D		
(39-54) E		
(21-38) F		
(1-20) G		
Not energy efficient - higher running costs		
	65	80
England & Wales		
EU Directive 2002/91/EC		

Environmental Impact (CO <sub>2</sub> ) Rating		
	Current	Potential
Very environmentally friendly - lower CO <sub>2</sub> emissions		
(92 plus) A		
(81-91) B		
(69-80) C		
(55-68) D		
(39-54) E		
(21-38) F		
(1-20) G		
Not environmentally friendly - higher CO <sub>2</sub> emissions		
England & Wales		
EU Directive 2002/91/EC		



127 Clarendon Park Road, Leicester, Leicestershire LE2 3AJ  
T: 0116 270 6699  
[lettings@archliving.co.uk](mailto:lettings@archliving.co.uk)

ARCH