



ARCH LIVING

[www.archliving.co.uk](http://www.archliving.co.uk)



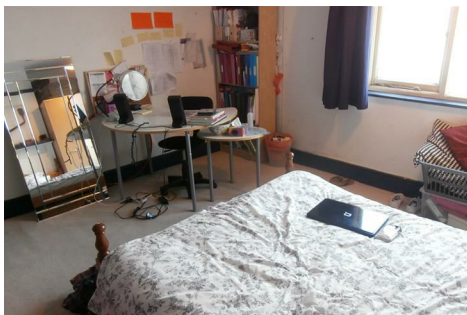
**173 Queens Road, Leicester, Leicestershire LE2 3FN**

**£300 Per week**

2019 - 2020 STUDENT ACCOMMODATION  
HALF JULY RENT  
ZERO DEPOSIT

BEAUTIFULLY PRESENTED STUDENT PROPERTY in CLARENDON PARK close to LEICESTER UNIVERSITY with x 4 DOUBLE BEDROOMS, LOUNGE, MODERN KITCHEN & x 2 MODERN BATHROOMS.

Viewing by appointment only, call us now to avoid disappointment.



127 Clarendon Park Road, Leicester, Leicestershire LE2 3AJ  
T: 0116 270 6699  
[lettings@archliving.co.uk](mailto:lettings@archliving.co.uk)

**ARCH**



ARCH LIVING

www.archliving.co.uk

Energy Efficiency Rating		
	Current	Potential
Very energy efficient - lower running costs		
(92 plus) <b>A</b>		
(81-91) <b>B</b>		
(69-80) <b>C</b>		
(55-68) <b>D</b>		
(39-54) <b>E</b>		
(21-38) <b>F</b>		
(1-20) <b>G</b>		
Not energy efficient - higher running costs		
England & Wales		
EU Directive 2002/91/EC		

Environmental Impact (CO <sub>2</sub> ) Rating		
	Current	Potential
Very environmentally friendly - lower CO <sub>2</sub> emissions		
(92 plus) <b>A</b>		
(81-91) <b>B</b>		
(69-80) <b>C</b>		
(55-68) <b>D</b>		
(39-54) <b>E</b>		
(21-38) <b>F</b>		
(1-20) <b>G</b>		
Not environmentally friendly - higher CO <sub>2</sub> emissions		
England & Wales		
EU Directive 2002/91/EC		