



**Badminton Road,
Frampton Cotterell, Bristol, BS36 2NN**

Price: OIEO £400,000

Property Features

- BRAND NEW DETACHED HOUSE
- Four Bedrooms
- Lounge/Dining Room
- Cloak room
- Two En-Suite Shower Room
- Double Glazed Throughout
- Under Floor and Gas Central Heating
- Off Street Parking
- Rear Garden
- Choice of Two

Full Description

AJ Homes are pleased to present these two deceptively spacious brand new houses being built to a high specification. Accommodation briefly comprises to the ground floor of entrance hall, cloakroom, kitchen/breakfast room and large lounge/dining room with bi-fold doors leading to the rear garden. To the first floor are three bedrooms (one en-suite) and a family bathroom and to the second floor a fourth bedroom and en-suite. The property benefits from under-floor heating and gas central heating. These properties are still available at the stage where kitchen units, work-surfaces and appliances could be chosen by the purchaser (subject to agreement). Also sanitary ware in the bathrooms could also be chosen (subject to agreement). Please contact the office to make arrangements to see these properties and to visit a finished house built to the same specifications on the same development.

HALLWAY

KITCHEN/BREAKFAST ROOM

15' 07" x 9' 01" (4.75m x 2.77m)

LIVING ROOM

22' 08" x 16' 08" (6.91m x 5.08m)

CLOAKROOM

LANDING

MASTER BEDROOM

12' 10" x 10' 08" (3.91m x 3.25m)

ENSUITE ONE

BEDROOM THREE



13' 04" x 9' 06" (4.06m x 2.9m)

BATHROOM

9' 07" x 6' 09" (2.92m x 2.06m)

BEDROOM FOUR

9' 03" x 6' 10" (2.82m x 2.08m)

LANDING

BEDROOM TWO

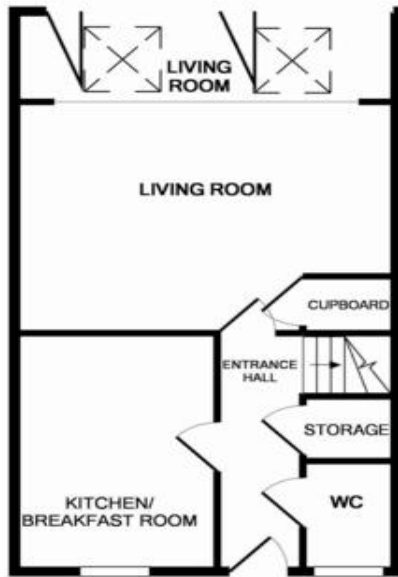
ENSUITE TWO

GARDEN

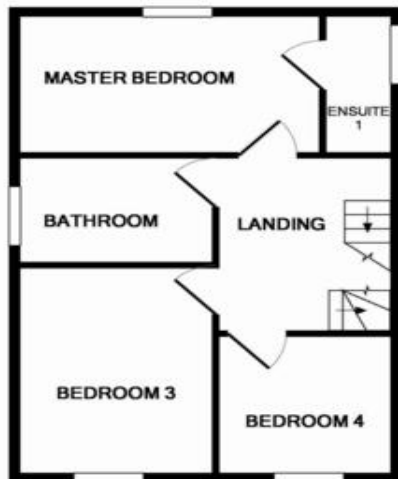
FRONTAGE

** Please note these measurements have been taken without plaster on the walls.**

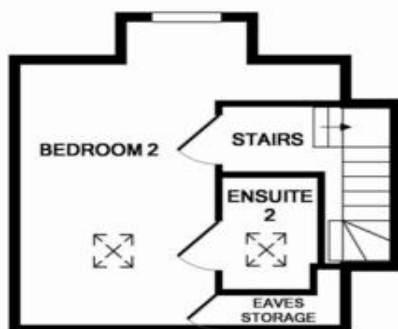




GROUND FLOOR



1ST FLOOR



4 Flaxpits Lane
Winterbourne
Bristol
Avon
BS36 1JX

www.aj-homes.co.uk
info@aj-homes.co.uk
01454 252140

Agents Note: Whilst every care has been taken to prepare these sales particulars, they are for guidance purposes only. All measurements are approximate are for general guidance purposes only and whilst every care has been taken to ensure their accuracy, they should not be relied upon and potential buyers are advised to recheck the measurements