



**£495 pw**  
**Vicentia Court, Bridges Wharf**  
Battersea, SW11 3GY

## PROPERTY SUMMARY

A smart and well proportioned apartment in this award winning riverside development in Battersea. Offering over 800sq ft of accommodation comprising two double bedrooms, two bathrooms (one en-suite), reception room with a stylish open plan kitchen with breakfast bar, and private balcony overlooking the courtyard gardens.

2 

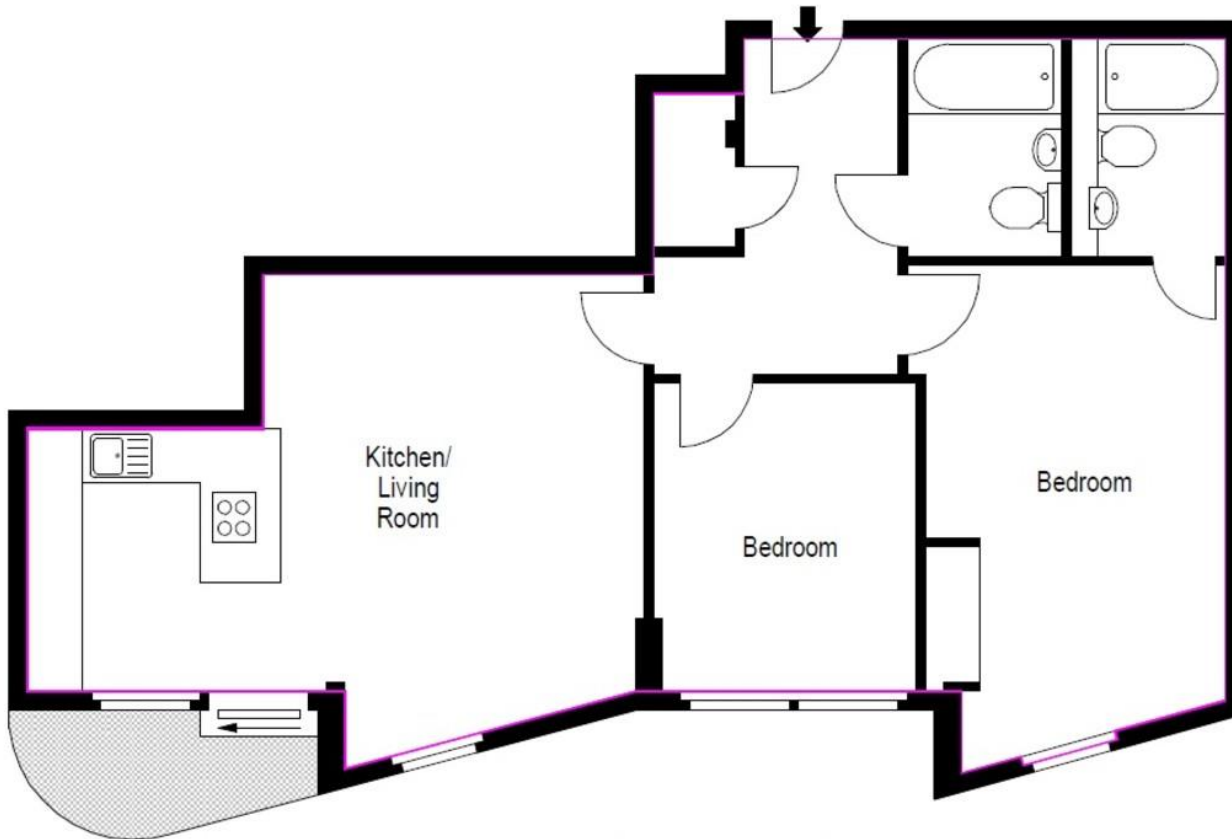
2 

1 









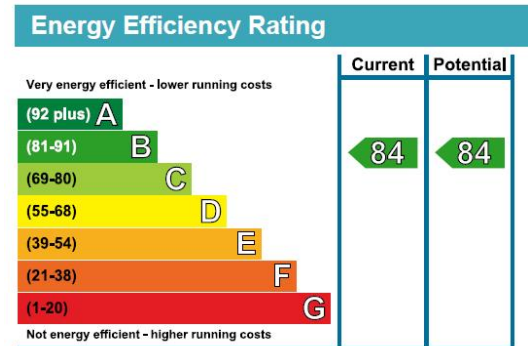
Approx Gross Internal Area - 807 sqft / 74.97 sqm

**LOCAL AUTHORITY**  
Wandsworth Borough Council

**TENURE**  
Leasehold

**COUNCIL TAX BAND**  
Band F

**VIEWINGS**  
By prior appointment only



Agents Note: Whilst every care has been taken to prepare these particulars, they are for guidance purposes only. All measurements are approximate and are for general guidance purposes only and whilst every care has been taken to ensure their accuracy, they should not be relied upon and potential buyers/tenants are advised to recheck the measurements



4 Vicentia Court  
Bridges Wharf  
London  
SW11 3GY

02073522455  
info@hgproperty.co.uk  
www.hgproperty.co.uk