

Orbis Wharf, Bridges Court Road
SW11 3GW

PROPERTY SUMMARY

A really lovely, spacious one bedroom apartment set on the fifth floor of this riverside development. The apartment offers over 540 sq ft of accommodation comprising one large bedroom, one bathroom and a social open reception room with a well appointed open plan kitchen. Further benefits include a private balcony and secure allocated parking for one car.

1

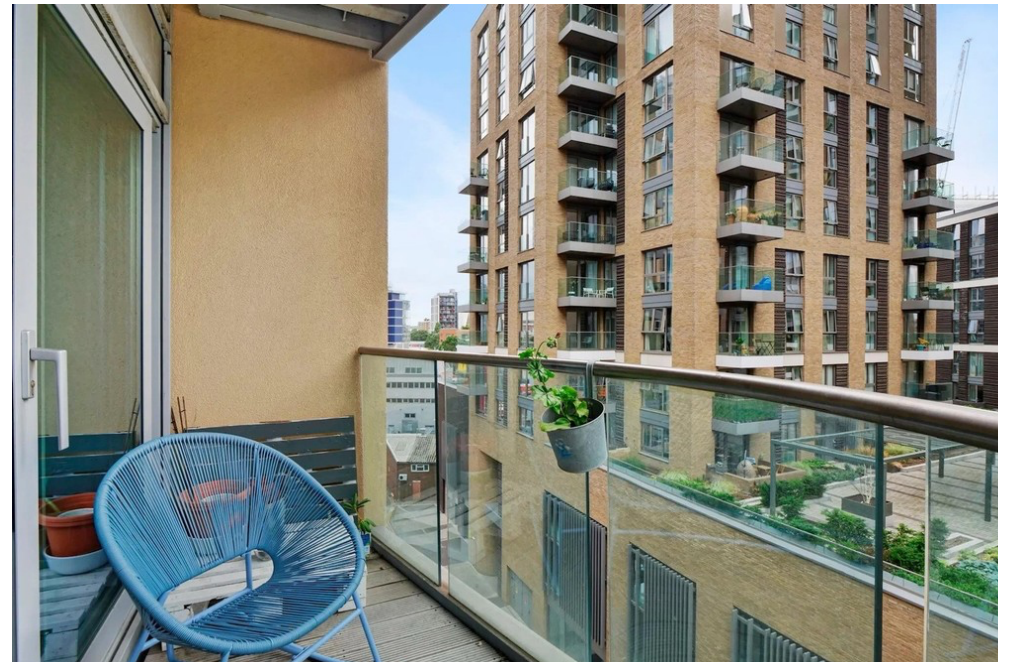


1



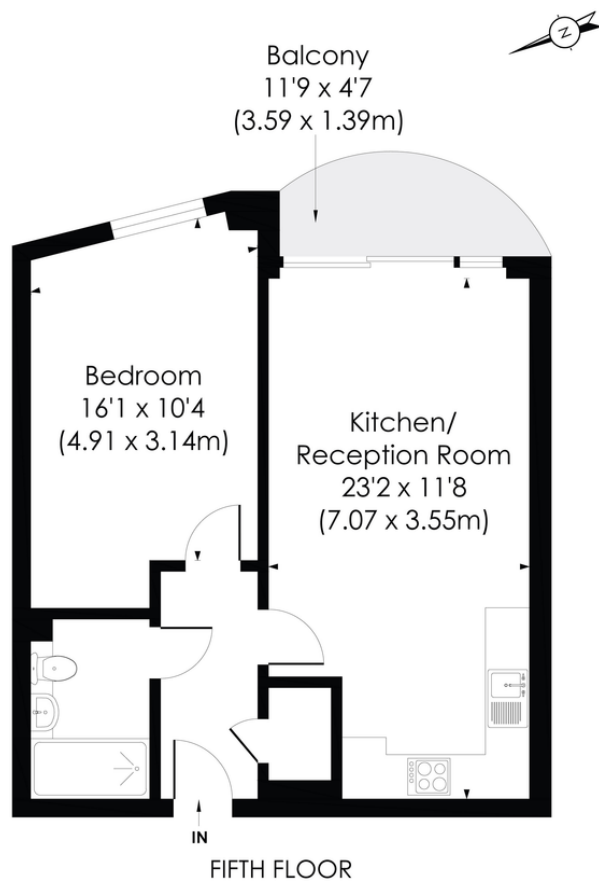
1





BRIDGES WHARF, SW11

Approx. Gross Internal Floor Area
543 Sq. ft/50.40 Sq. m



LOCAL AUTHORITY

Wandsworth Borough Council

TENURE

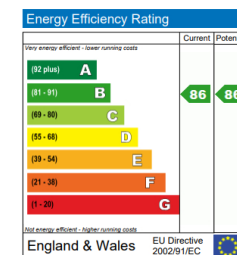
Leasehold

COUNCIL TAX BAND

Band D

VIEWINGS

By prior appointment only



The energy efficiency rating is a measure of the overall efficiency of a home. The higher the rating the more energy efficient the home is and the lower the fuel bills are likely to be.

Agents Note: Whilst every care has been taken to prepare these particulars, they are for guidance purposes only. All measurements are approximate and are for general guidance purposes only and whilst every care has been taken to ensure their accuracy, they should not be relied upon and potential buyers/tenants are advised to recheck the measurements



4 Vicentia Court
Bridges Wharf
London
SW11 3GY

02073522455
info@hgproperty.co.uk
www.hgproperty.co.uk