

MAY WHETTER & GROSE



THE OLD SORTING ROOM EAST HILL, ST AUSTELL, PL25 4AA £3,675 (FROM) PER MONTH

SUBSTANTIAL VACANT SPACE IN THE TOWN CENTRE

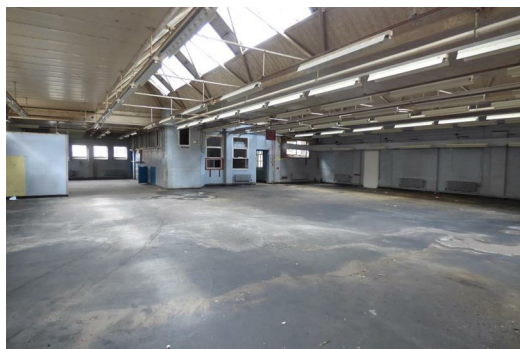
APPROXIMATELY 6300 SQ

SUITABLE FOR A NUMBER OF POTENTIAL USES

EXCELLENT ON SITE PARKING

ACCESS FROM EAST HILL OR HIGH CROSS STREET

ALSO AVAILABLE
LARGE COMPOUND/PARKING AREA APPROACHING 5000 SQ'



Energy Efficiency Rating		
	Current	Potential
Very energy efficient - lower running costs		
(92 plus) A		
(81-91) B		
(69-80) C		
(55-68) D		
(39-54) E		
(21-38) F		
(1-20) G		
Not energy efficient - higher running costs		
England & Wales		EU Directive 2002/91/EC

Environmental Impact (CO ₂) Rating		
	Current	Potential
Very environmentally friendly - lower CO2 emissions		
(92 plus) A		
(81-91) B		
(69-80) C		
(55-68) D		
(39-54) E		
(21-38) F		
(1-20) G		
Not environmentally friendly - higher CO2 emissions		
England & Wales		EU Directive 2002/91/EC



Piran House, 11 Fore Street, St. Austell, Cornwall, PL25 5PX . Tel: (01726) 73501
 Also at Piran House, 11 Fore St, St. Austell, Cornwall PL25 5PX. Tel: (01726) 73501
 Website: www.maywhetter.co.uk E-mail: sales@maywhetter.co.uk