



NET
LETTINGS
.COM

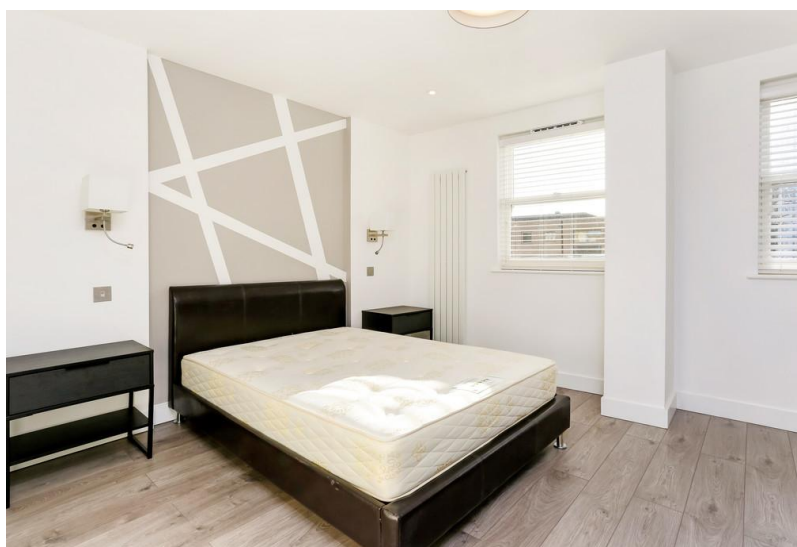
Flat 9, Karam Court, Commercial Road

London, E1 2PS

- Brand New Private Development
- Secure Entry
- Open Plan Living Space
- Lift Access

£1,850 pcm Fees Apply





Property Description

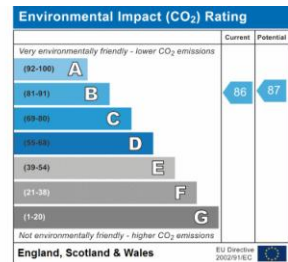
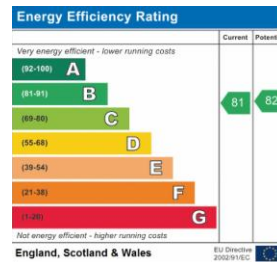
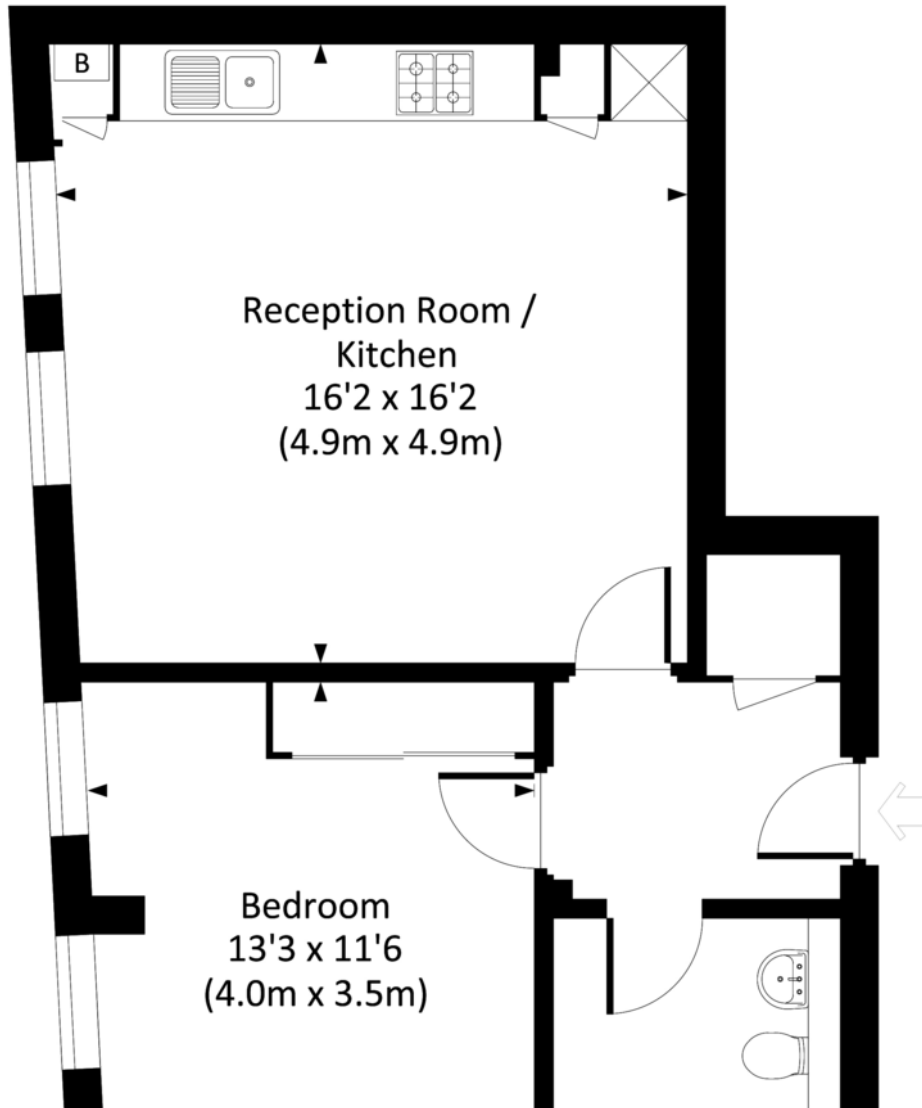
%full_description_title[b,br,#0a3646]_dim[ij]%





KARAM COURT, E1

Approx. gross internal area
532 Sq Ft. / 49.4 Sq M.



Viewings

By Appointment only

Council Tax Band

Band C

Local Authority

Tower Hamlets London Borough Council

Registered Office

Suite C, 36-40 Copperfield Road, London,
E3 4RR /08050057

Find us on   

www.netlettings.com

management@netlettings.com

020 8981 5551

mydeposits.co.uk



rightmove
find your happy

Zoopla.co.uk 



Agents Note: Whilst every care has been taken to prepare these particulars, they are for guidance purposes only. All measurements are approximate and are for general guidance purposes only and whilst every care has been taken to ensure their accuracy, they should not be relied upon and potential tenants are advised to recheck the measurements.