



**NET**   
**LETTINGS**  
**.COM**

**Flat 6, Karam Court, Commercial Road**

London, E1 2PS

- Secure Private Development
- Open-Plan Kitchen/Lounge
- Fully Integrated Kitchen
- Double Bedrooms

**£2,400 pcm Fees Apply**





## Property Description

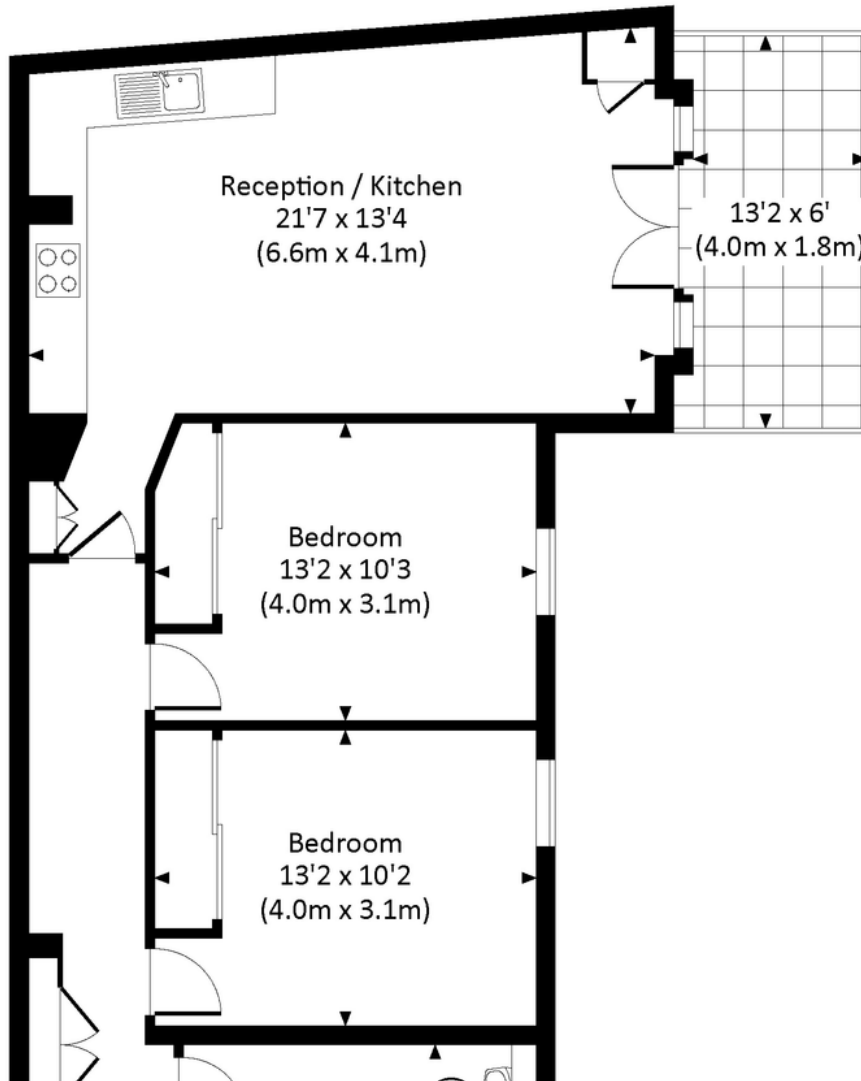
%full\_description\_title[b,br,#0a3646]\_dim[i]%





# KARAM COURT, COMMERCIAL ROAD, E1

Approx. gross internal area  
737 Sq Ft. / 68.5 Sq M.



## Viewings

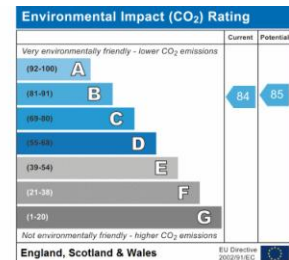
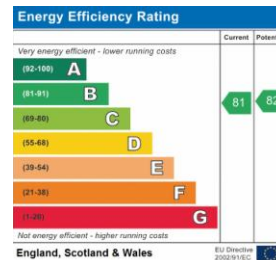
By Appointment only

## Council Tax Band

Band C

## Local Authority

Tower Hamlets London Borough Council



## Registered Office

Suite C, 36-40 Copperfield Road, London,  
E3 4RR /08050057

Find us on

[www.netlettings.com](http://www.netlettings.com)

[management@netlettings.com](mailto:management@netlettings.com)

020 8981 5551

[mydeposits.co.uk](http://mydeposits.co.uk)



**rightmove**  
find your happy

**Zoopla.co.uk**



Agents Note: Whilst every care has been taken to prepare these particulars, they are for guidance purposes only. All measurements are approximate and are for general guidance purposes only and whilst every care has been taken to ensure their accuracy, they should not be relied upon and potential tenants are advised to recheck the measurements.