

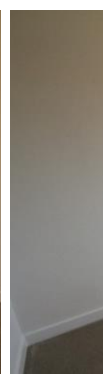
TO LET



Lockeridge Close, Trowbridge

2 Bedrooms, 1 Bathroom, Terraced House

£900 pcm



**Lockeridge Close,
Trowbridge**
Terraced House,
2 bedroom, 1 bathroom

£900 pcm

Date available: Available
Now

Deposit: £1,035

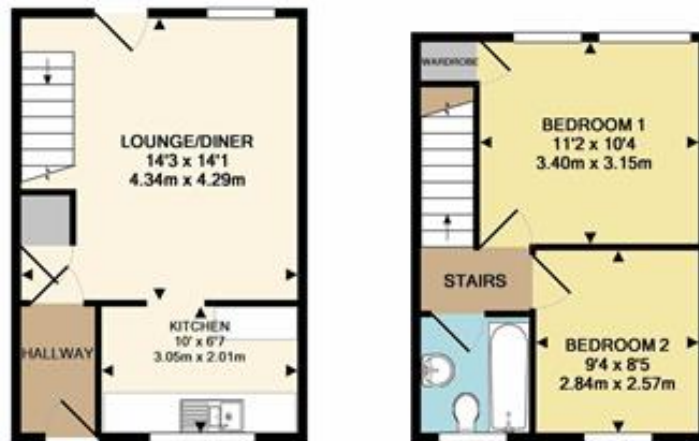
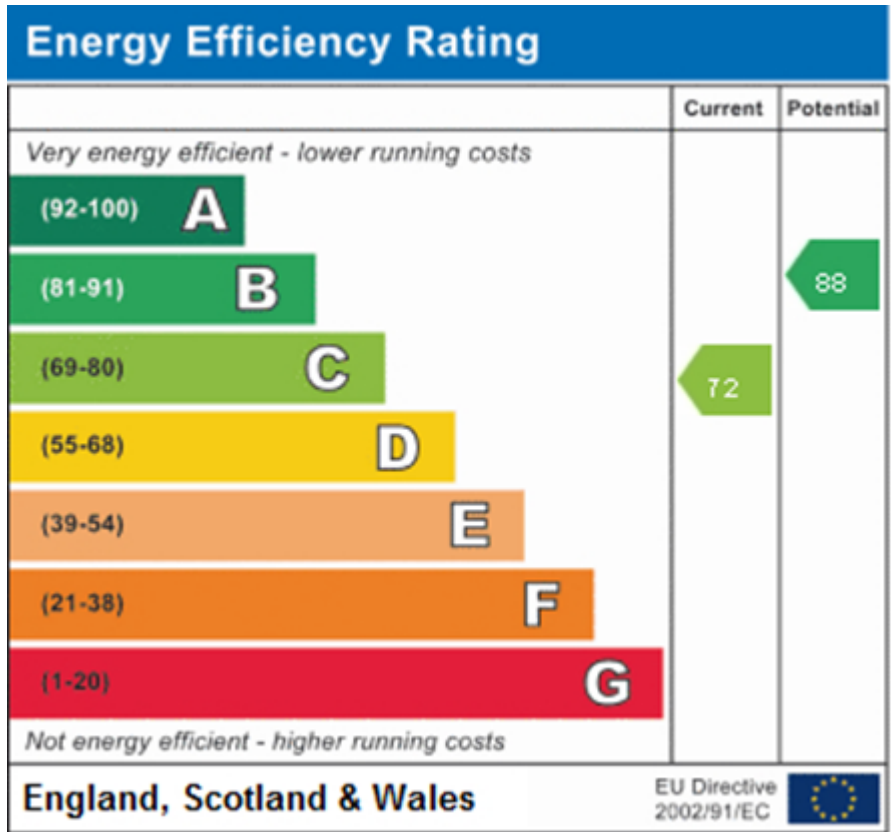
Holding deposit: £235

Unfurnished

Council Tax band: B

- Well presented two bedroom house
- Double glazing and gas central heating
- Quiet cul-de-sac location
- Large living room
- Fitted kitchen
- Modern bathroom
- Fully enclosed rear garden

A well presented two bedroom house, situated on a quiet cul-de-sac close to local amenities. Featuring a large living room, low maintenance garden with shed, allocated parking and two good size bedrooms, as well as gas central heating and uPVC double glazing. Available immediately for long term let.



GROUND FLOOR
APPROX. FLOOR
AREA 293 SQ.FT.
(27.2 SQ.M.)

1ST FLOOR
APPROX. FLOOR
AREA 278 SQ.FT.
(25.8 SQ.M.)

TOTAL APPROX. FLOOR AREA 571 SQ.FT. (53.1 SQ.M.)

Whilst every attempt has been made to ensure the accuracy of the floor plan contained here, measurements of doors, windows, rooms and any other items are approximate and no responsibility is taken for any error, omission, or mis-statement. This plan is for illustrative purposes only and should be used as such by any prospective purchaser. The services, systems and appliances shown have not been tested and no guarantee as to their operability or efficiency can be given.
Made with Metropix ©2018



Martin & Co Westbury

7 Palomino Place • Westbury • Wiltshire • BA13 3SD
T: 01373 866686 • E: westbury@martinco.com

01373 866686

<http://www.martinco.com>



Accuracy: References to the Tenure of a Property are based on information supplied by the Seller. The Agent has not had sight of the title documents. A Buyer is advised to obtain verification from their Solicitor. Items shown in photographs including but not limited to carpets, fixtures and fittings are not included unless specifically mentioned within the sales particulars. They may however be available by separate negotiation. Buyers must check the availability of any property and make an appointment to view before embarking on any journey to see a property. No person in the employment of the agent has any authority to make any representation about the property, and accordingly any information given is entirely without responsibility on the part of the agents, sellers(s) or lessors(s). Any property particulars are not an offer or contract, nor form part of one. **Sonic / Laser Tape:** Measurements taken using a sonic / laser tape measure may be subject to a small margin of error. **All Measurements:** All Measurements are Approximate. **Services Not tested:** The Agent has not tested any apparatus, equipment, fixtures and fittings or services and so cannot verify that they are in working order or fit for the purpose. A Buyer is advised to obtain