

**The Velvet Mill Lilycroft Road, Bradford, West Yorkshire BD9 5BN**  
**£525 PCM**

A brand new conversion in what was the largest Silk Factory in the UK, this furnished apartment is flooded with light from the large windows. With a living space of 751 Sq Ft, this apartment is not to be missed. Benefiting from a separate kitchen/dining area to the living space, fitted with brand new appliances and furnishings, a large bedroom, and a good sized bathroom with bath tub and shower. The apartment is bursting with character; the exposed brick walls, high ceilings, structural beams and wooden floors all contribute to the appealing aesthetics.

Parking can be found within the locality, and the apartment is only a short trip from Bradford City Centre.

Fees May Apply - Contact Locate Homes For Further Information. Available from January 2019.

**Locate**  
The Property Experts

**Locate Properties UK LTD**

29-31 North Parade, Bradford, West Yorkshire, BD1 3JL

t. +44 (0) 01274 720 900



@locatehomesbfd

e. info@locatehomes.co.uk



[www.locatehomes.co.uk](http://www.locatehomes.co.uk)

Registered in England & Wales No. 5161728

## Entrance

## Living Room



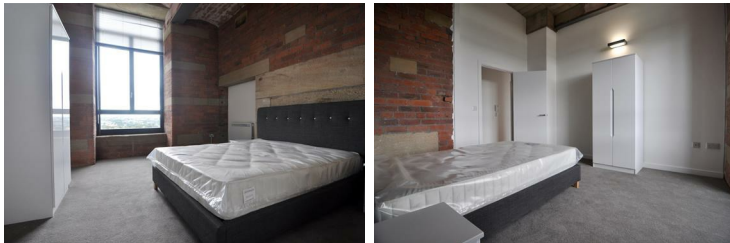
A substantial living space complete with new double sofa, coffee table and TV stand. The living room is overwhelmed with light from the two large double glazed windows.

## Kitchen



A modern kitchen, with full integrated appliances and under cupboard lighting, boasts plenty of storage and worktop space. A modern and stylish dining table completes the kitchen.

## Bedroom



With the large rooms becoming a regular feature in this apartment, the bedroom does not disappoint. With ample storage, a brand new double bed and mattress, and a huge window, this bedroom has everything you will need to settle in straight away.

## Bathroom



A full three piece suite, again brand new and clean, with mixer shower and glass screen.



Energy Efficiency Rating		Current	Potential
Very energy efficient - lower running costs			
(92 plus) <b>A</b>			
(81-91) <b>B</b>			
(69-80) <b>C</b>			
(55-68) <b>D</b>			
(39-54) <b>E</b>	46	46	
(21-38) <b>F</b>			
(1-20) <b>G</b>			
Not energy efficient - higher running costs			
<b>England &amp; Wales</b>		EU Directive 2002/91/EC	
Environmental Impact (CO <sub>2</sub> ) Rating		Current	Potential
Very environmentally friendly - lower CO <sub>2</sub> emissions			
(92 plus) <b>A</b>			
(81-91) <b>B</b>			
(69-80) <b>C</b>			
(55-68) <b>D</b>			
(39-54) <b>E</b>			
(21-38) <b>F</b>			
(1-20) <b>G</b>			
Not environmentally friendly - higher CO <sub>2</sub> emissions			
<b>England &amp; Wales</b>		EU Directive 2002/91/EC	