



*jordanfishwick*

MANCHESTER  
Century Buildings



## Century Buildings, Manchester M3 2DE

Price £575,000



### The Property

DUPLEX PENTHOUSE APARTMENT WITH OVER 2000 SQFT OF LIVING SPACE! The spacious accommodation is over two floors, with a stylish reception hall/study, impressive living room with access to the balcony, which overlooks the River Irwell, stunning contemporary style dining kitchen and utility room/WC. To the first floor there is a landing, master bedroom with built in wardrobes, en-suite bathroom and separate shower room. There is a second double bedroom with stylish en-suite bathroom. A 24 hour concierge mans the secure communal reception hall providing a valet parking service for the allocated parking space. (vehicle restrictions in place)

Century Buildings is an outstanding example of Victorian architectural design that still stands proud and appeals to those with both the traditional and modernist eye. The main part of the building has retained its original features with an elaborate attention to detail. Without a doubt this is a

### Directions



- Duplex Penthouse
- Two Double Bedrooms
- 2119 sq ft
- Extensive Balcony
- Water Views
- EPC Rating E
- No Chain
- Valet Parking Space
- 24 Hour Concierge
- Three Bathrooms and WC

**Postcode** - M3 2DE

**EPC Rating** - E

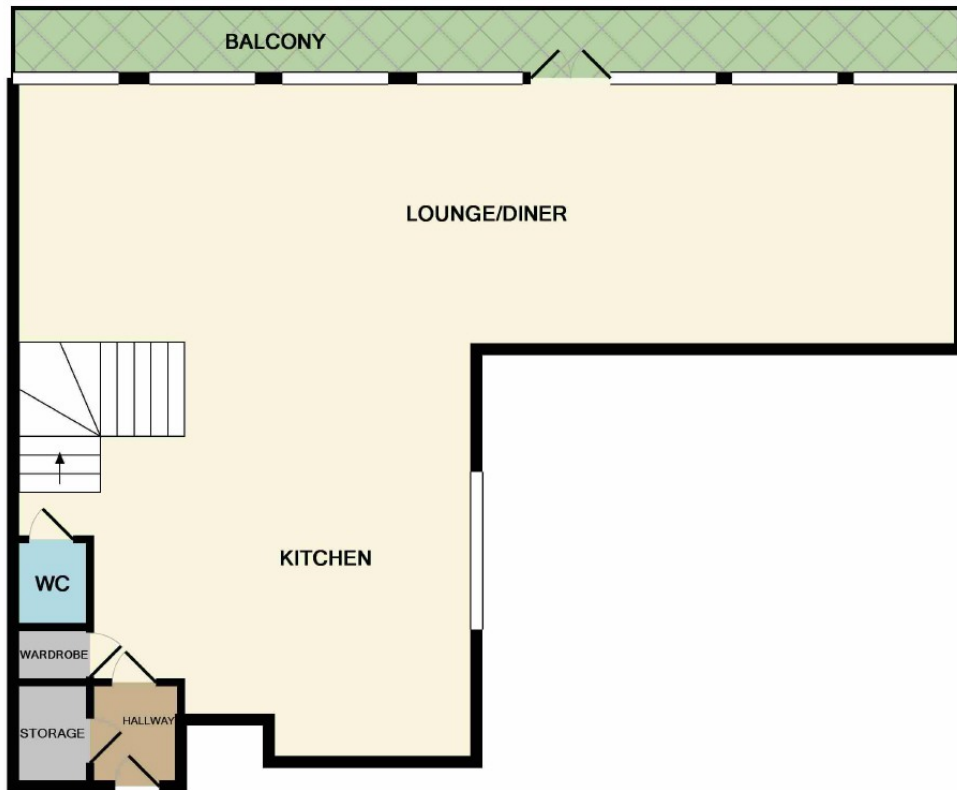
**Floor Area** - 2119 sq ft

**Local Authority** -

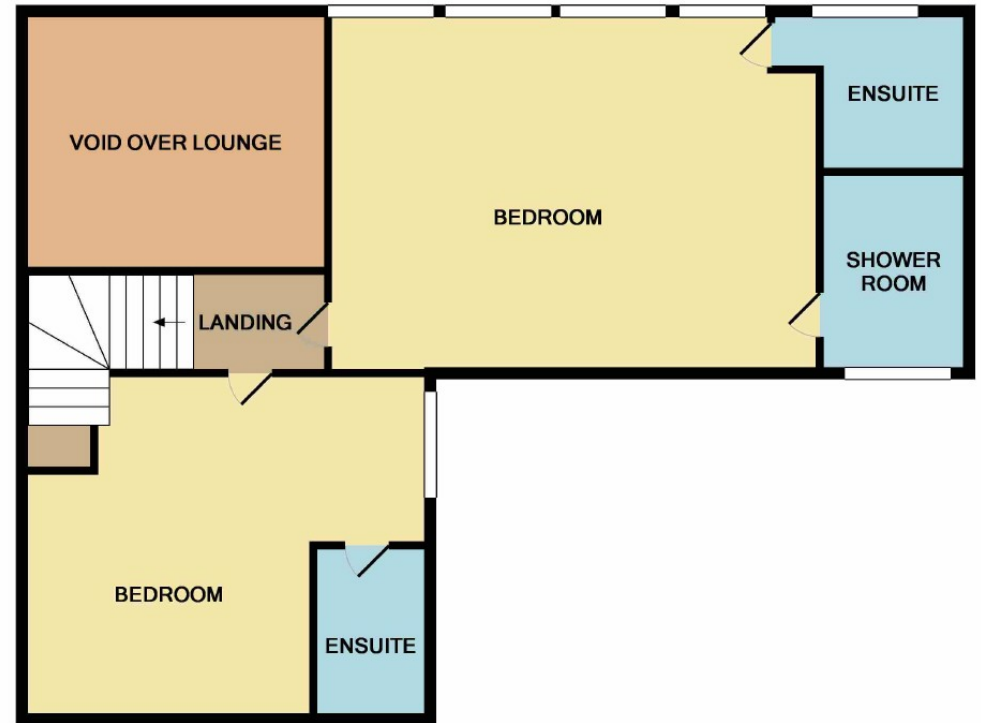
**Council Tax** - Band







GROUND FLOOR



1ST FLOOR

Measurements are approximate. Not to scale. Illustrative purposes only  
Made with Metropix ©2019