



*jordanfishwick*

MANCHESTER  
Century Buildings





## Century Buildings, Manchester

### M3 2DE

Price £510,000



### The Property

DUPLEX PENTHOUSE APARTMENT. The spacious accommodation is over two floors, with a stylish reception hall/study, impressive living room with access to the balcony, which overlooks the River Irwell, stunning contemporary style dining kitchen and utility room/WC. To the first floor there is a landing, master bedroom with built in wardrobes, en-suite bathroom and separate shower room. There is a second double bedroom with stylish en-suite bathroom. A 24 hour concierge reception and valet parking service for the allocated parking space. (vehicle restrictions in place)

Century Buildings is an outstanding example of Victorian architectural design that still stands proud and appeals to

those with both the traditional and modernist eye. The main part of the building has retained its original features with an elaborate attention to detail. Without a doubt this is a remarkable opportunity to purchase a luxury apartment in one of Manchester's finest residential buildings. No Chain,

### Directions

Century Buildings is located just off Deangate and within short walking distance to Spinningfields.



- Duplex Penthouse
- Two Double Bedrooms
- Extensive Balcony
- Water Views
- EPC Rating C
- No Chain
- Valet Parking Space
- 24 Hour Concierge
- Three Bathrooms and WC

**Postcode** - M3 2DE

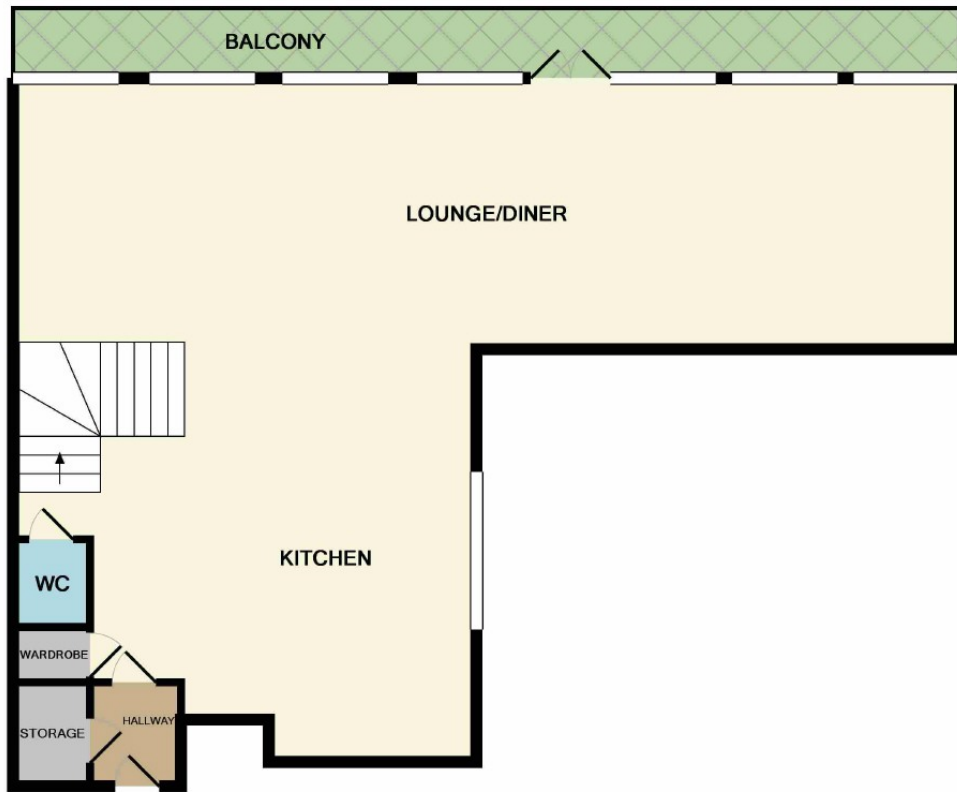
**EPC Rating** - C

**Floor Area** - 1735 sq ft

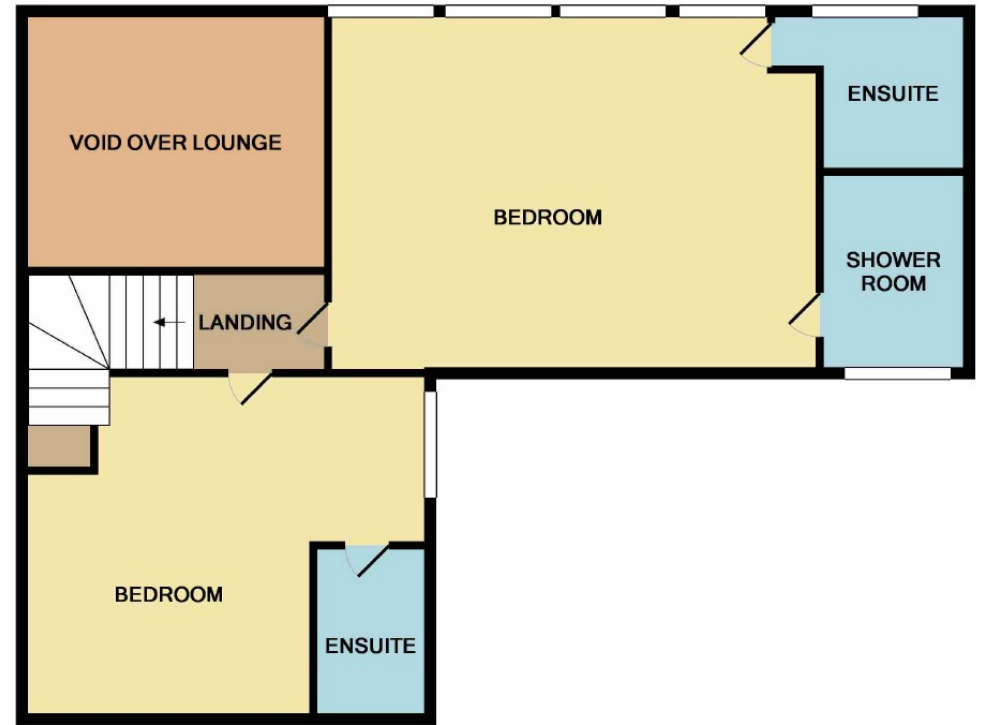
**Local Authority** -

**Council Tax** - Band G





GROUND FLOOR



1ST FLOOR

Measurements are approximate. Not to scale. Illustrative purposes only  
Made with Metropix ©2019