

Student Property - House
Schuster Road, Manchester

£1,400 PCM

Six Bedroom House

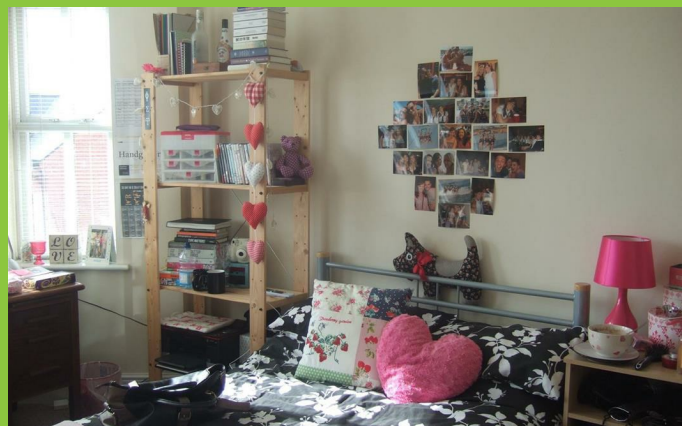
View more properties at homes4u.co.uk

Schuster Road, Victoria Park, Manchester, M14 5PE
£1,400 PCM

STUDENT LET! A huge, modern, four storey, terraced house in an excellent location in Victoria Park. The property is full furnished and will be fitted with brand new kitchen over summer! The property benefits from all double bedrooms, two spare rooms, two bathrooms and a separate living area and kitchen. It also has a spacious back garden and off road parking.

The ground floor provides a modern open plan kitchen/dining and lounge. This features a dishwasher, washer/dryer, fridge/freezer, gas cooker, 2 microwaves, dining table and chairs and has laminated flooring. Doors off the kitchen provide access to the large rear garden, and additional storage area. There is also a ground floor toilet and washroom. The first floor provides two of the six bedrooms and situated between them a toilet and washbasin W.C. Both bedrooms are furnished with large beds and free standing furniture, including wardrobes, desks and chairs. This floor also provides access to the front balcony. To the second floor are a further two bedrooms and situated between them a bathroom that contains a shower, washbasin and toilet. These bedrooms are also furnished with large beds and free standing furniture, including wardrobes, desks and chairs. To the third floor are the remaining two bedrooms which benefit from a bathroom situated between them, with bath/shower combo and toilet. Again both these bedrooms are also furnished with large beds and free standing furniture including desks, chairs and have additional built in storage/wardrobe space.

Located in-between Anson road and Wilmslow Road providing excellent access to the Manchester Universities and MRI hospital with the 50 bus route and the 42 and both within



View all our properties at
homes4u.co.uk

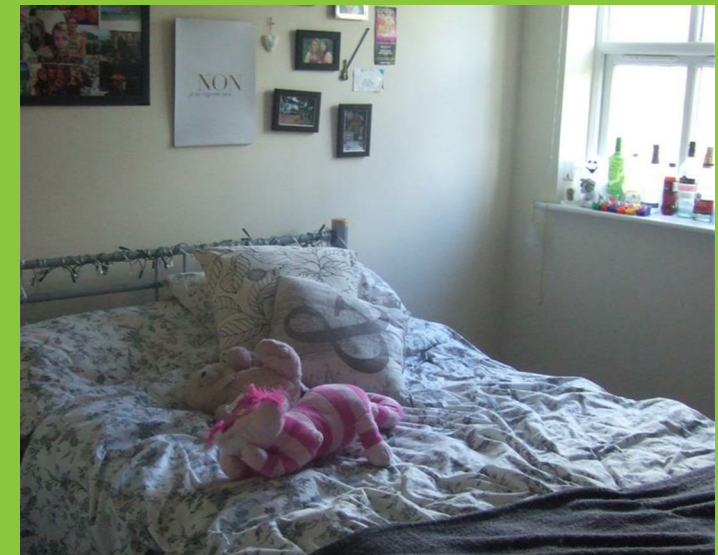
Whilst we endeavour to ensure the accuracy of property details, we have not tested any apparatus, equipment, fixtures, fittings or services and so cannot verify that they are in working order or fit for purpose. Neither have we had sight of legal documents to verify Planning Permission or the Freehold or Leasehold status of any property. Buyers are advised to obtain verification from their solicitor and/or surveyor. Items shown in photographs are not included; they may be available by separate negotiation. Although we try to ensure the accuracy of measurements, we recommend if potential purchasers require accurate measurements to order flooring, or to ensure existing furniture will fit, they should take their own measurements.

Schuster Road, Victoria Park, Manchester, M14 5PE
£1,400 PCM

homes4uTM
for all your property needs



- Available academic year
- Double bedrooms
- Two spare rooms
- Fully furnished
- Four storey house
- First floor balcony
- Brand new kitchen to be fitted
- Back garden
- Two bathrooms
- Close to Wilmslow Road



homes4uTM

City Centre and North Manchester
Sales Team 0161 236 8606
Rentals Team 0161 236 0202
city@homes4u.co.uk

South Manchester and Cheshire
Sales Team 0161 448 4805
Rentals Team 0161 448 0090
southmanchester@homes4u.co.uk

@homes4u homes4umanchester homes4u.manchester homes4u homes4u

View more properties at homes4u.co.uk