

tavistockbow

For Rent



People Make Places



Berwick Street, Soho W1

Studio | 291 sq ft

£495 pw

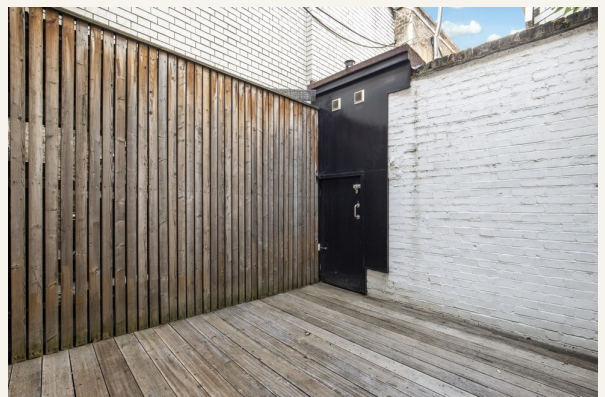




Boasting a private terrace, this studio has a neutral decor with wooden floors and white walls. Positioned in the heart of Soho, a short walk from Oxford Circus and Tottenham Court Road Underground Stations, the studio has useful storage and an open-plan kitchen. Available February unfurnished.

What you need to know

- Studio flat
- One bathroom
- First floor (walk-up)
- Private terrace
- Wooden floors throughout
- Unfurnished
- Secondary glazing windows
- Washer/dryer
- Available February
- Close to Oxford Circus & Tottenham Court Road tube stations





Overview

Featuring a private terrace, this studio apartment is on the first floor, walk-up, of a period building in Soho. The living space has an open-plan kitchen with white units and black worktop, while fitted wardrobes provide adequate storage space. There is a white suite bathroom with sandstone wall tiles and secondary glazing is fitted for tenant comfort.

Berwick Street is famed for its music culture and buzzing food market, which serves food from around the globe. Transport links are available at nearby Tottenham Court Road (Central, Northern and Elizabeth Lines) and Oxford Circus (Central, Bakerloo and Victoria Lines) Underground Stations. Soho Square is just a few streets away providing a tranquil green space to relax while several bus routes operate on nearby Oxford Street and Charing Cross Road.

The apartment is available in February on an unfurnished basis. Subject to contract and satisfactory references, the landlord offers a one to three-year lease with a mutual rolling six-month



People Make Places

London is a collection of inspiring urban villages and one of the most exciting places in the world to live, work & play.

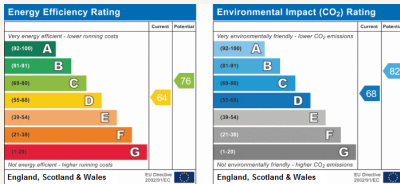
We work with both property owners and their occupiers, sharing the story of these vibrant neighbourhoods, conveying the unique soul & energy to future custodians, the people who'll keep them buzzing.

And unlike many real estate businesses we're not just about buildings, because streets & buildings don't make a neighbourhood.

We're about building relationships, because **people make places**.

MISINTERPRETATION ACT [COPYRIGHT] DISCLAIMER: Tavistock Bow Ltd for themselves and for the vendor(s) of this property whose agents they are, given notice that: 1. These particulars do not constitute, not constitute any part of, an offer or contract. 2. None of the statements contained in these particulars as to the property are to be relied on as statements or representations of fact. 3. Any intending purchaser or lessee must satisfy themselves by inspection or otherwise as to the correctness of each of the statements contained in these particulars. 4. The vendor(s) or lessor(s) do not make or give and neither Tavistock Bow Ltd nor any person in their employment has any authority to make or give any representation or warranty whatever in relation to this property. Finance Act 1989, Unless otherwise stated all prices and rents are quote exclusive of VAT. Property Misrepresentation Act 1991; These details are believed to be correct at the time of compilation but may be subject to subsequent amendment.

Follow us:     @tavistockbow

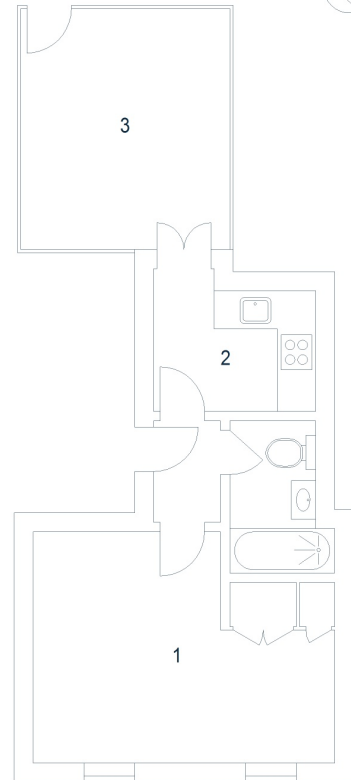


Berwick Street, W1

Approximate Gross Internal Area 27 sq m / 291 sq ft

First Floor

- 1 Bedroom / Reception Room
4.74 x 3.64M
15'7" x 11'11"
- 2 Kitchen
2.57 x 1.89M
8'5" x 6'2"
- 3 Terrace
3.81 x 3.31M
12'6" x 10'10"



Floor Plan produced for Tavistock Bow by Mays Floorplans © . Tel 020 3397 4594
Illustration for identification purposes only, not to scale.

tavistockbow

21 New Row, Covent Garden,
London, WC2N 4LE

t: 020 7477 2177
e: hello@tavistockbow.com
w: tavistockbow.com



Berwick Street, Soho W1