



51 Middle Drive, Cofton Hackett, B45 8AL | £289,950
Three Bedroom Semi-Detached House

Summary:

A beautifully presented and generously proportioned three bedroom extended family home with delightful south facing rear garden, located in the sought after area of Cofton Hackett.

Description:

The accommodation comprises: Porch, entrance hall with guest cloakroom, dining room with bay window and open fireplace, spacious lounge with gas feature fire and sliding patio door to garden and modern kitchen/diner overlooking the garden. The storage lean-to can be accessed via either the kitchen, rear garden or front of the property. The first floor offers two generous double bedrooms (one with fitted wardrobes), single bedroom and modern shower room with airing cupboard.

Externally, the property features a delightful south facing rear garden with patio area, lawn, decorative wooden arch, a collection of shrubs and hedged and fenced boundaries. The fore provides a block paved driveway suitable for several vehicles.

Location:

Cofton Hackett itself has many fine walks to be enjoyed in the Lickey woods and Cofton Park. There are some local shops, with the M42 and M5 motorways links nearby. Barnt Green village is approximately one and a quarter miles away and has every day shopping facilities, doctor's surgery, dentist, local primary school and railway station. No more than 2 miles away is the recently regenerated Longbridge site (former MG Rover car plant), home to the largest Marks and Spencers in the Midlands.



Room Dimensions:

Lounge:

20' 7" x 11' 2" (6.28m x 3.42m)

Dining Room:

13' 2" (into bay) x 11' 2" (4.03m x 3.41m)

Kitchen/Diner:

17' 1" x 7' 4" (5.22m x 2.24m)

Storage:

25' 9" x 7' 4" (max) (7.87m x 2.24m)

Stairs To First Floor Landing

Master Bedroom:

13' 5" (into bay) x 11' 2" (4.11m x 3.42m)

Bedroom Two:

12' 6" x 11' 2" (3.82m x 3.42m)

Bedroom Three:

9' 0" x 7' 5" (2.75m x 2.27m)

Shower Room:

6' 5" x 5' 9" (1.98m x 1.77m)

EPC: E

Council Tax Band: D

Tenure: Freehold

For more information on Middle Drive or to arrange a viewing, please call the Barnt Green Office on 0121 447 8300

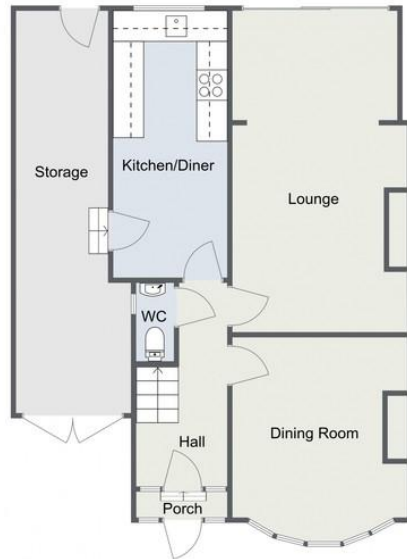


Middle Drive, Cofton Hackett

First Floor



Ground Floor



Total Approximate Area (Including Storage): 114.6 sq. m (1,233.54 sq. ft)

For illustrative purposes only. Decorative finishes, fixtures & fittings do not represent the current state of the property. Measurements are approximate & not to scale.
Floor Plans made using RoomSketcher.

Middle Drive, Cofton Hackett

First Floor



Ground Floor



Total Approximate Area (Including Storage): 114.6 sq. m (1,233.54 sq. ft)

For illustrative purposes only. Decorative finishes, fixtures & fittings do not represent the current state of the property. Measurements are approximate & not to scale.
Floor Plans made using RoomSketcher.

Please read the following: These particulars are for general guidance only and are based on information supplied and approved by the seller. Complete accuracy cannot be guaranteed and may be subject to errors and/or omissions. They do not constitute a contract or part of a contract in any way. We are not surveyors or conveyancing experts therefore we cannot and do not comment on the condition, issues relating to title or other legal issues that may affect this property. Interested parties should employ their own professionals to make enquiries before carrying out any transactional decisions. Photographs are provided for illustrative purposes only and the items shown in these are not necessarily included in the sale, unless specifically stated. The mention of any fixtures, fittings and/or appliances does not imply that they are in full efficient working order and they have not been tested. All dimensions are approximate. We are not liable for any loss arising from the use of these details.