

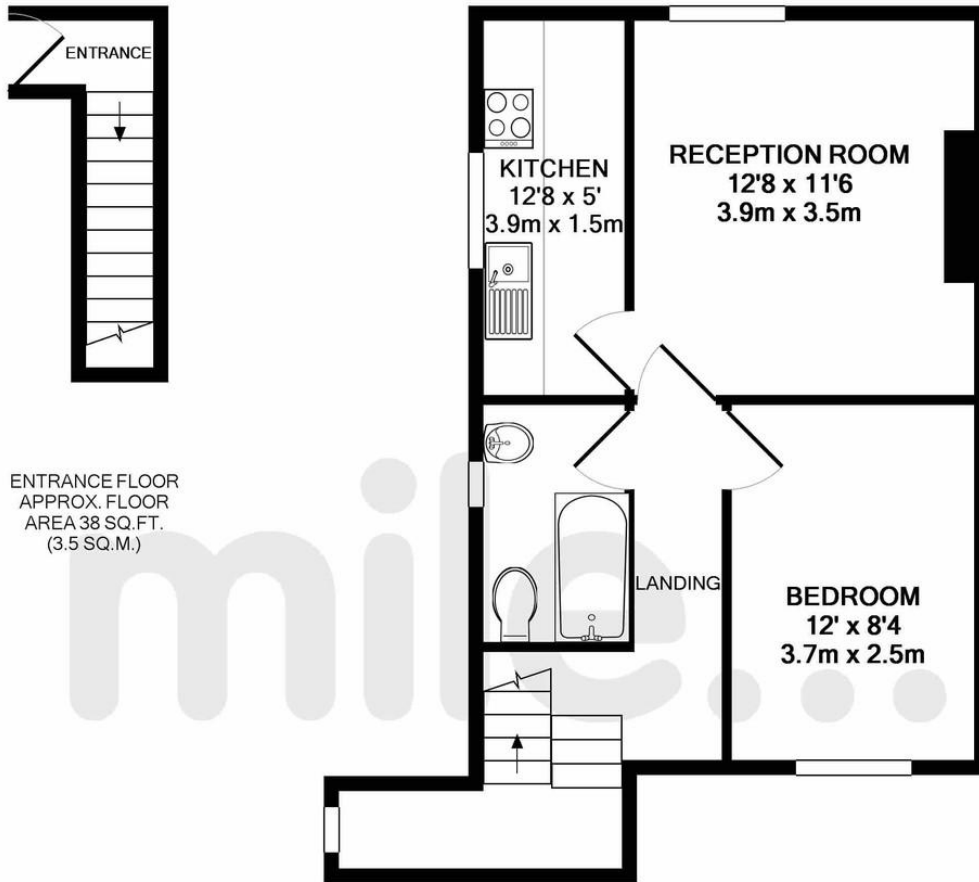


Long Lane, East Finchley N2 £1,200pcm

Sole Agents

Mile are delighted to offer this spacious one bedroom first floor maisonette comprising of a good size double bedroom, a large reception room, bathroom and separate fully fitted kitchen. The property is in good condition throughout and is located on Long Lane within easy reach of the local tubes and shops of East Finchley and High Road Finchley. Available 24th March 2019!

- One bedroom
- Separate kitchen
- Good condition throughout
- Close to amenities
- Fantastic location
- Available 24th March 2019!
- Split level maisonette
- Large reception room
- Good size reception
- Bright and airy



ENTRANCE FLOOR
APPROX. FLOOR
AREA 38 SQ.FT.
(3.5 SQ.M.)

1ST FLOOR
APPROX. FLOOR
AREA 433 SQ.FT.
(40.3 SQ.M.)

TOTAL APPROX. FLOOR AREA 471 SQ.FT. (43.8 SQ.M.)

Whilst every attempt has been made to ensure the accuracy of the floor plan contained here, measurements of doors, windows, rooms and any other items are approximate and no responsibility is taken for any error, omission, or mis-statement. This plan is for illustrative purposes only and should be used as such by any prospective purchaser. The services, systems and appliances shown have not been tested and no guarantee as to their operability or efficiency can be given

Made with Metropix ©2019

MONEY LAUNDERING REGULATIONS 2003: Intending purchasers will be asked to produce identification documentation at a later stage and we would ask for your co-operation in order that there will be no delay in agreeing the sale.

General: While we endeavour to make our sales particulars fair, accurate and reliable, they are only a general guide to the property and, accordingly, if there is any point which is of particular importance to you, please contact the office and we will be pleased to check the position for you, especially if you are contemplating travelling some distance to view the property.

Measurements: These approximate room sizes are only intended as general guidance. You must verify the dimensions carefully before ordering carpets or any built-in furniture.

Services: Please note we have not tested the services or any of the equipment or appliances in this property, accordingly we strongly advise prospective buyers to commission their own survey or service reports before finalising their offer to purchase.