



Plot 5, Shepherds View, Shepherds Close, Killamarsh, Sheffield, S21 1JH
£335,000

REDBRIK 
ESTATE AGENTS

Shepherds View is a bespoke development of four and five bedroom executive detached homes, located in the village of Killamarsh.

- Four Bedroom Detached Home
- Exclusive New Development
- Contemporary Kitchen With Integrated Neff Appliances
- 'Swaledale' House Type
- High Specification New Build, Quality Fittings Throughout
- Master Bedroom with En-Suite Shower Room
- Utility Room, Downstairs W.C
- Enclosed Rear Garden, Driveway, Detached Single Garage
- Help To Buy Available - Only 5% Deposit Required
- Available Summer/Autumn 2019

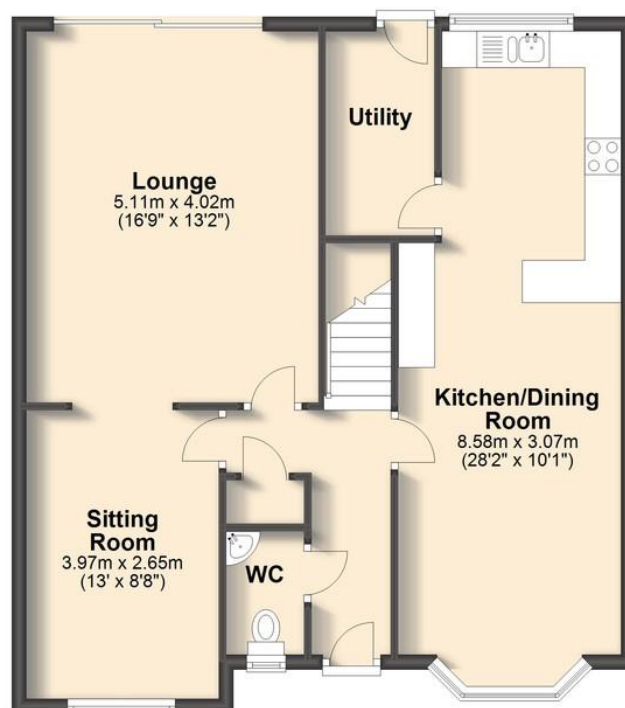
Plot 5 Shepherds View is an executive detached home, located within this new development in the semi-rural village of Killamarsh. Providing a generous 1550 sq. ft. of luxury accommodation set over two levels, this family home features four double bedrooms, a contemporary living kitchen with integrated Neff appliances, two luxurious bath/shower rooms, two reception rooms plus a utility. The property also benefits from an enclosed landscaped garden & detached garage.





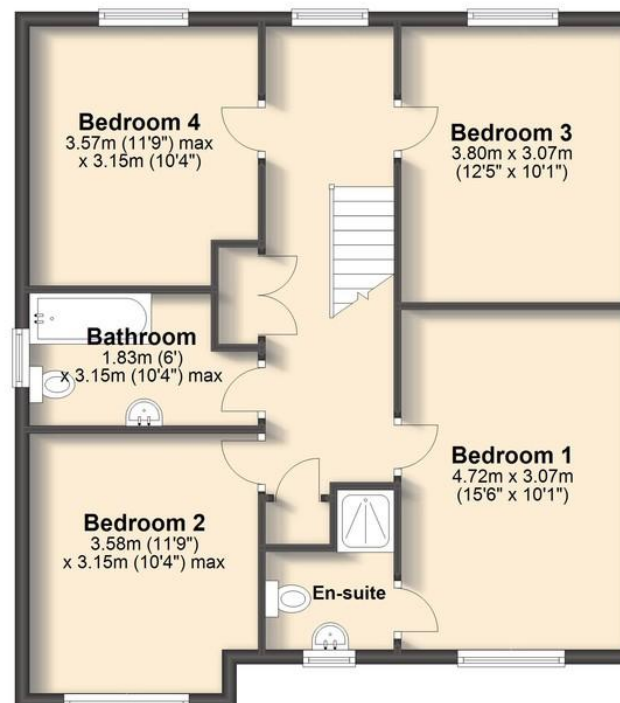
Ground Floor

Approx. 72.1 sq. metres (775.9 sq. feet)



First Floor

Approx. 71.9 sq. metres (774.4 sq. feet)



Total area: approx. 144.0 sq. metres (1550.2 sq. feet)



We endeavor to make these particulars as accurate as possible, but they should only be used as guidance and they do not constitute any part of the contract. All measurements are approximate and no guarantees are made to the services, heating systems, appliances (if any) or fittings as to their working order and no warranty can be given or implied.

SALES:

CHESTERFIELD T: 01246 563 060
MILLHOUSES T: 0114 399 0567
CRYSTAL PEAKS T: 0114 361 1000

LETTINGS:

SHEFFIELD T: 0114 361 0140
CHESTERFIELD T: 01246 380 414
KELHAM ISLAND T: 0114 361 0140

REDBRIK 
ESTATE AGENTS

E: sales@redbrik.co.uk www.redbrik.co.uk   

