



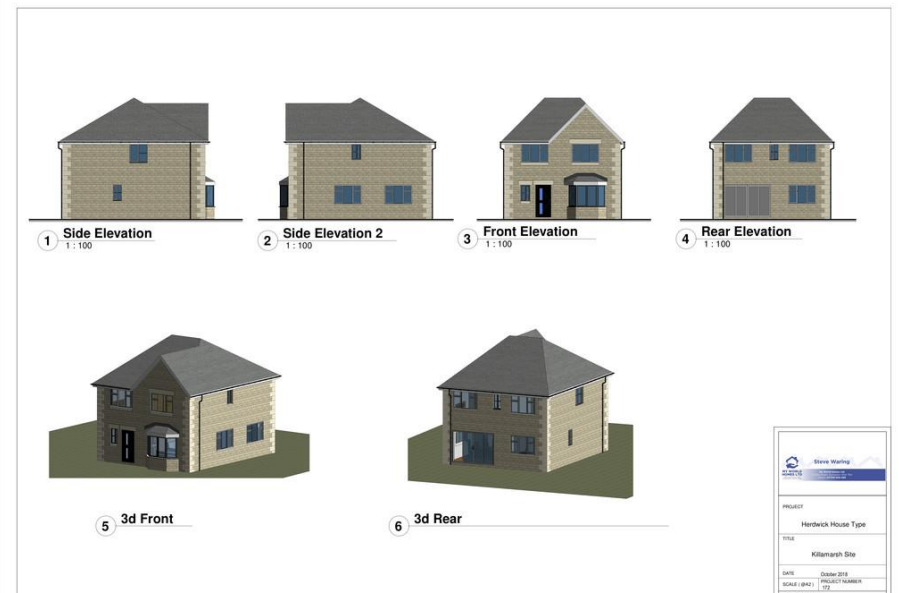
Plot 3, Shepherds View, Shepherds Close, Killamarsh, Sheffield, S21 1JH
£300,000

REDBRIK 
ESTATE AGENTS

Shepherds View is a bespoke development of four and five bedroom executive detached homes, located in the village of Killamarsh.

- Four Bedroom Detached House
- Enclosed Rear Garden, Driveway, Detached Single Garage
- 'Herdwick' House Type
- Contemporary Dining Kitchen With Integrated Appliances
- Separate Utility Space and Downstairs W.C.
- Exclusive New Development
- High Specification New Builds, Quality Fittings Throughout
- Master Bedroom with En-Suite Shower Room
- Help To Buy Available
- Available Summer/Autumn 2019

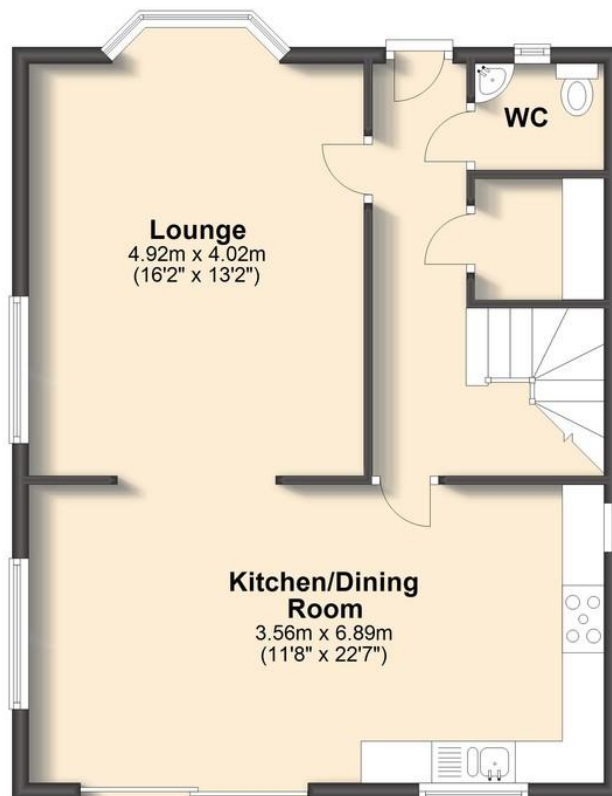
Plot 3 Shepherds View is an executive detached home, located within this new development in the semi-rural village of Killamarsh. Providing over 1500 sq. ft. of luxury accommodation set over two levels, this family home features four double bedrooms, a contemporary dining kitchen with integrated Neff appliances, separate lounge, two luxurious bath/shower rooms, utility space and downstairs WC. The property also benefits from an enclosed landscaped garden, block paved driveway & detached single garage.





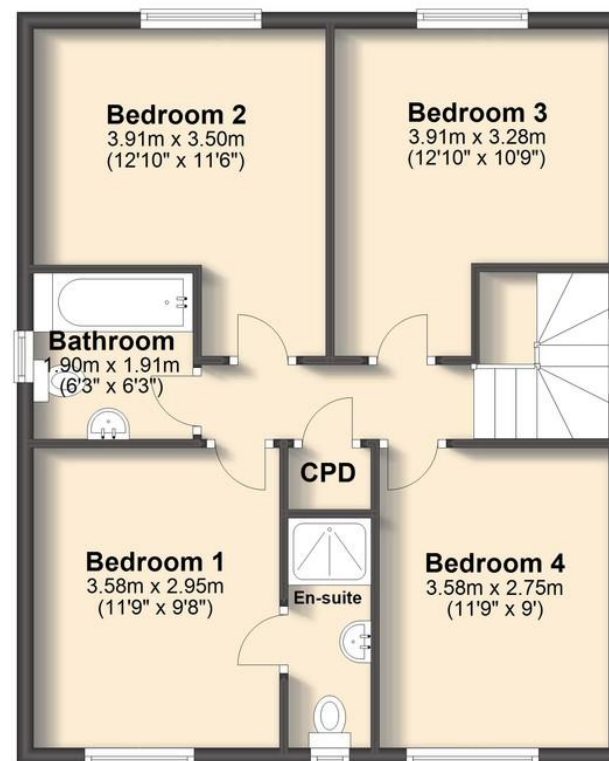
Ground Floor

Approx. 59.4 sq. metres (639.0 sq. feet)



First Floor

Approx. 58.9 sq. metres (634.1 sq. feet)



Total area: approx. 118.3 sq. metres (1273.1 sq. feet)



We endeavor to make these particulars as accurate as possible, but they should only be used as guidance and they do not constitute any part of the contract. All measurements are approximate and no guarantees are made to the services, heating systems, appliances (if any) or fittings as to their working order and no warranty can be given or implied.

SALES:

CHESTERFIELD T: 01246 563 060
MILLHOUSES T: 0114 399 0567
CRYSTAL PEAKS T: 0114 361 1000

LETTINGS:

SHEFFIELD T: 0114 361 0140
CHESTERFIELD T: 01246 380 414
KELHAM ISLAND T: 0114 361 0140



REDBRIK ro
ESTATE AGENTS

E: sales@redbrik.co.uk www.redbrik.co.uk

