



**The Carrick Plot 32, Forgan Drive, Leuchars, St.  
Andrews, KY16 0DS**



**NEXT HOME™**  
ESTATE & LETTINGS AGENTS

# £515,000

The Carrick is an impressive 1.5 storey house of 300sqm. Its striking façade reflects the scale and grandeur of the interior. While designed as a five bedroomed family home there is scope to modify the design to meet alternative requirements such as an upper lounge, games room, artist studio, gym room to name but a few of the options.

When it comes to getting the details right, Drumoig Developments Ltd are committed to quality throughout. We have worked with the award winning Architectural and Planning Consultants, Montgomery Forgan Associates, from the initial concept for the development through planning approvals to building approvals. We only work with high-quality brands and contractors, for example, award winning Selan Design kitchens, a UK supplier of inspirational bathroom furniture Roper Rhodes, and high quality timber built double glazed window and doors manufactured by Norwegian manufacturer Nordan Ltd..

From sleek, designer kitchens to cool, contemporary bathrooms, down to the comfort and energy efficient air-sourced underfloor heating throughout, there's plenty to fire your imagination to create that unique country living at the prestigious Drumoig location.

Selan Design kitchen - designed to your needs. Choice of contemporary German-made kitchen while more traditional options will be available. Kitchens will include Siemen integrated appliances – ovens, warming drawer, induction hob, fridge/freezer and hob extractor. Kitchens will include Siemen integrated appliances – ovens, warming drawer, induction hob, fridge/freezer and hob extractor.

Sample kitchen designs for all house types are available for viewing and clients will be encouraged to engage with Selan Design to create that ideal kitchen that meets their specific needs.

Splashback that complements that contemporary look. The floor for the kitchen and associated dining area will be tiled with a choice of tiles from our agreed range at Ceramic Tile Distribution Centre.

Photos and Videos are for illustration only.

## ROOM SIZES

**LOUNGE 21' 7" x 13' 1" (6.6m x 4.0m)**  
**KITCHEN/DINER 28' 10" x 10' 8" (8.8m x 3.26m)**  
**FAMILY ROOM 13' 5" x 10' 8" (4.1m x 3.27m)**  
**GARAGE 21' 11" x 22' 3" (6.7m x 6.8m)**  
**MASTER BEDROOM 21' 7" x 13' 1" (6.6m x 4.0m)**  
**BEDROOM ONE 14' 5" x 10' 8" (4.4m x 3.27m)**  
**BEDROOM TWO 15' 5" x 10' 8" (4.7m x 3.27m)**  
**BEDROOM THREE 11' 1" x 10' 8" (3.4m x 3.27m)**  
**BEDROOM FOUR 10' 2" x 10' 8" (3.1m x 3.27m)**

## SPECIFICATION

### UTILITY ROOM

Utility rooms designed by Selan Design.  
Quality Bosch appliances – washing machine and dryer.  
Sink and washing area.  
Splashback that complements that contemporary look.  
The floor for the utility will be tiled with a choice of tiles from our agreed range at Ceramic Tile Distribution Centre.

### BATHROOMS/ENSUITES/CLOAKROOM

Roper Rhodes inspirational and contemporary bathroom sanitaryware  
Roper Rhodes designer fitted bathroom furniture  
Quality shower units and shower enclosures, with shower valves fitted to the hot and cold-water system. Glazed shower screens.  
500mm splashback to all sides and full height around any shower area.  
Stand-alone showers will be tiled full height.  
All tiling will be from a choice of tiles from our agreed range at Ceramic Tile Distribution Centre.

### HEATING

Air-sourced underfloor hot water heating system throughout.  
Zonal controls throughout the house to make for the perfect room temperature .  
Hitachi Yutaki M range Air Source Heat pump positioned to the side or rear of the garage.

## Next Home Estate Agents

63 – 65 George Street,  
Perth,  
01738 44 43 42

1a James Square,  
Crieff,  
01764 65 00 44

211 High Street,  
Auchterarder,  
01764 66 36 66

41 – 43 Allan Street,  
Blairgowrie,  
01250 39 80 02

21 Atholl Road,  
Pitlochry,  
01796 54 80 14



## FLOORING

Floor tiling for the kitchen, dining, utility areas and to all bathrooms and en-suites.

All other floor areas will be screed or chipboard t & g boards.

For untiled floors clients can arrange for their own choice of flooring to meet their desired needs. (client cost)

## ELECTRICAL

Mains wired (with battery back-up) smoke detectors throughout and heat detector in kitchen.

TV socket to lounge, Kitchen and master bedroom.

BT point (Superfast fibre broadband availability).

Zonal controls throughout for underfloor heating.

PIR operated outside light.

White sockets and switch units.

Front doorbell and chime.

Intruder alarm.

Chrome towel radiator to bathroom/en-suite.

## WATER SYSTEM

The hot water system will be a 250 litre heat pump mains pressure cylinder.

Secondary return circuit to make sure that hot water is quickly available at the draw off points furthest away from the cylinder.

## INTERIOR FINISHINGS

Internal doors and glazed screens will be pre-finished oak veneered solid core Vancouver range by LPD Doors.

Door casings, facings, skirtings etc- MDF painted eggshell colour white.

Walls and ceilings will be finished in a smooth texture and painted in either white or magnolia emulsion.

Ceilings will have recessed LED down lighting

Fitted wardrobes are to have "yourstyle" sliding doors including oak surround with silver mirror panels in oriental style.

## EXTERNAL SPECIFICATION

Roof finish - Marley Modern Slate lookalike concrete roof tiles either grey or red brindle colour.

External rendering – K Rend Silicone scraped textured either white or Ivory coloured that provides that more modern and contemporary look.

External Stone Walling - Marshalls reconstituted stone split

faced either grey or buff colour.

Precast sill and thresholds - Sills and thresholds will be reconstituted stone to match the stone walling.

Rainwater goods - Marley UPVC Deepflow gutters and downpipes coloured black.

Windows and external doors –Nordan timber double glazed windows and doors with 10-year guarantee.

Multi-lock locking system to front and rear exterior doors.

Insulation to fabric of the building – all external walls, roofs and floors to the living areas will be insulated to current building standards or better.

External walls and roof to the garage will be insulated.

Alutec Georgian insulated sectional garage door size 4420mm wide x 2000mm high.

Garage door to include a Sommer sprint evolution overhead electric closer.

## GARDENS AND DRIVEWAYS

Garden areas will be sculpted with topsoil and grass seeded.

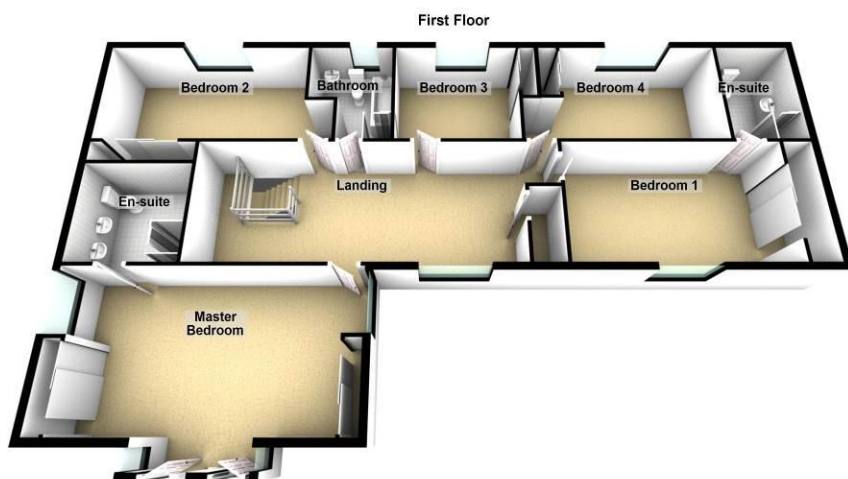
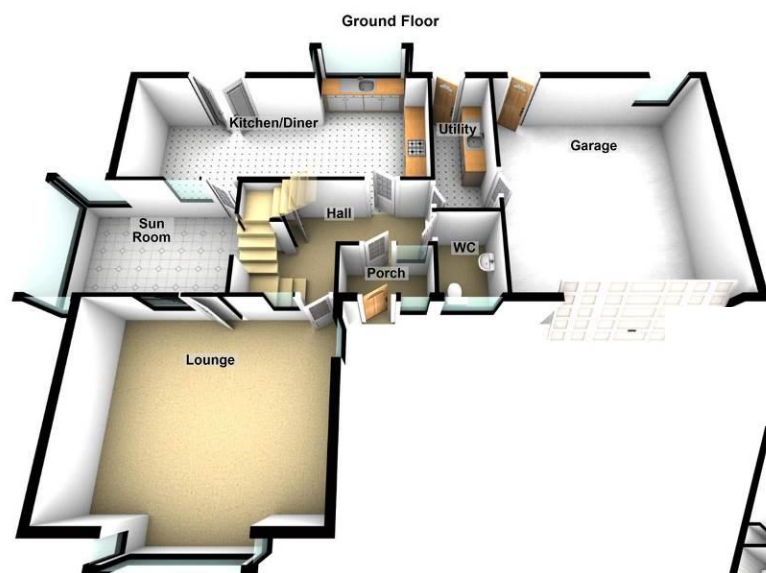
Post and wire fences are to be provided at the front rear and sides of the gardens.

For added privacy 1.8m high timber screen fencing will be provided where shown on the site plan.

Hard landscaping will include an allowance of 60m<sup>2</sup> of 600mm x 600mm x 50 mm grey concrete paving slabs to form any paths, entrances or patios around the house.

Driveways will be laid to 20mm gravel on weed barrier with gravel boards at edges.





  
**NEXT HOME**™  
ESTATE & LETTINGS AGENTS

#### Valuation on your own property

Valuation on your own property: If you would like to know how much your property might achieve in today's market, we are pleased to offer a free market appraisal with no obligation. We are now available 7 days till 9pm - just call 01738 444342 to arrange an appointment.

[www.nexthomeonline.co.uk](http://www.nexthomeonline.co.uk)

#### Next Home Estate Agents

63 – 65 George Street, Perth – 01738 44 43 42  
41 – 43 Allan Street, Blairgowrie – 01796 54 80 14  
21 Atholl Road, Pitlochry – 01796 54 80 14  
1a James Square, Crieff – 01764 65 00 44  
211 High Street, Auchterarder – 01764 66 36 66  
Email: [sales@nexthomeonline.co.uk](mailto:sales@nexthomeonline.co.uk)

#### Please Note:

These particulars whilst believed to be accurate are set out as a general outline only for guidance and do not constitute any part of an offer or contract intending, purchasers should not rely on them as statements or representations of fact, but must satisfy themselves by inspection or otherwise as to their accuracy. No person in this firm's employment has the authority to make or give representation or warranty in respect of the property. All room sizes are approximate and for general guidance only. They cannot be relied upon for fitting carpets, furniture etc.