



## 24 Shaftesbury Avenue

Blackpool, FY2 9QH

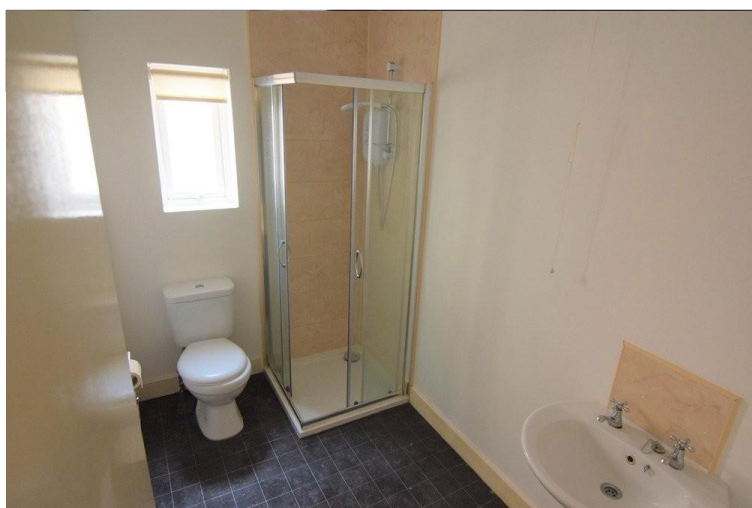
- **1 BEDROOM GROUND FLOOR FLAT**
- **MODERN LOUNGE/KITCHEN**
- **MODERN SHOWER ROOM**
- **MOVE IN COSTS £859.13**

**£92.05 pw**

EPC Rating '62'

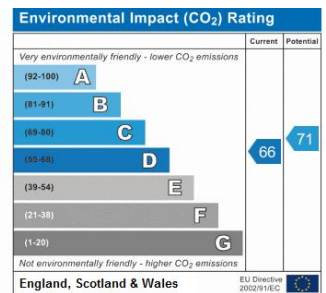
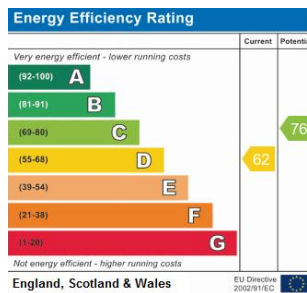


Flat 2, 24 Shaftesbury Avenue, Blackpool, FY2 9QH



Property Description





Address:  
Flat 2 Shaftesbury

21 Counce Street  
Blackpool  
Lancashire  
FY1 3LA

[www.moveholmes.co.uk](http://www.moveholmes.co.uk)  
01253 928200  
[enquiries@moveholmes.co.uk](mailto:enquiries@moveholmes.co.uk)

Agents Note: Whilst every care has been taken to prepare these sales particulars, they are for guidance purposes only. All measurements are approximate and are for general guidance purposes only and whilst every care has been taken to ensure their accuracy, they should not be relied upon and potential buyers are advised to recheck the measurements