



VICEROY COURT, PRINCE ALBERT ROAD, NW8 7PR £1,750pw / £7,583pm Unfurnished

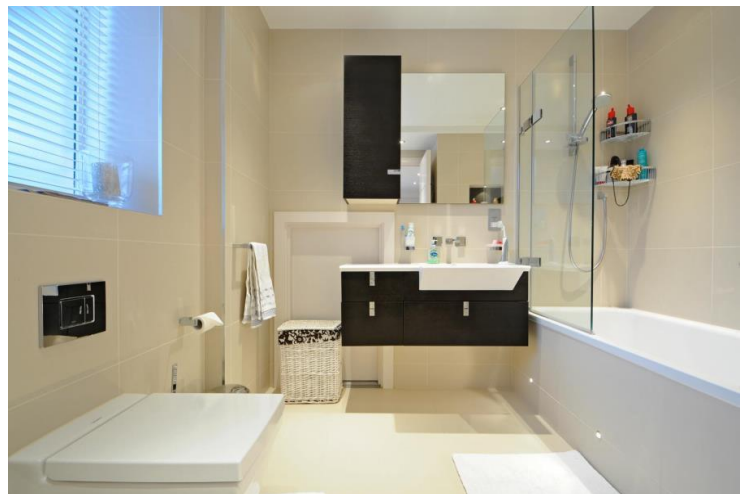
A well-presented and spacious first floor balcony apartment situated in this portered block located opposite Regent's Park. Viceroy Court is located within approximately 0.7 miles for St John's Wood High Street and tube station (Jubilee line). This three bedroom property benefits from two underground parking spaces, portorage and a communal roof terrace.

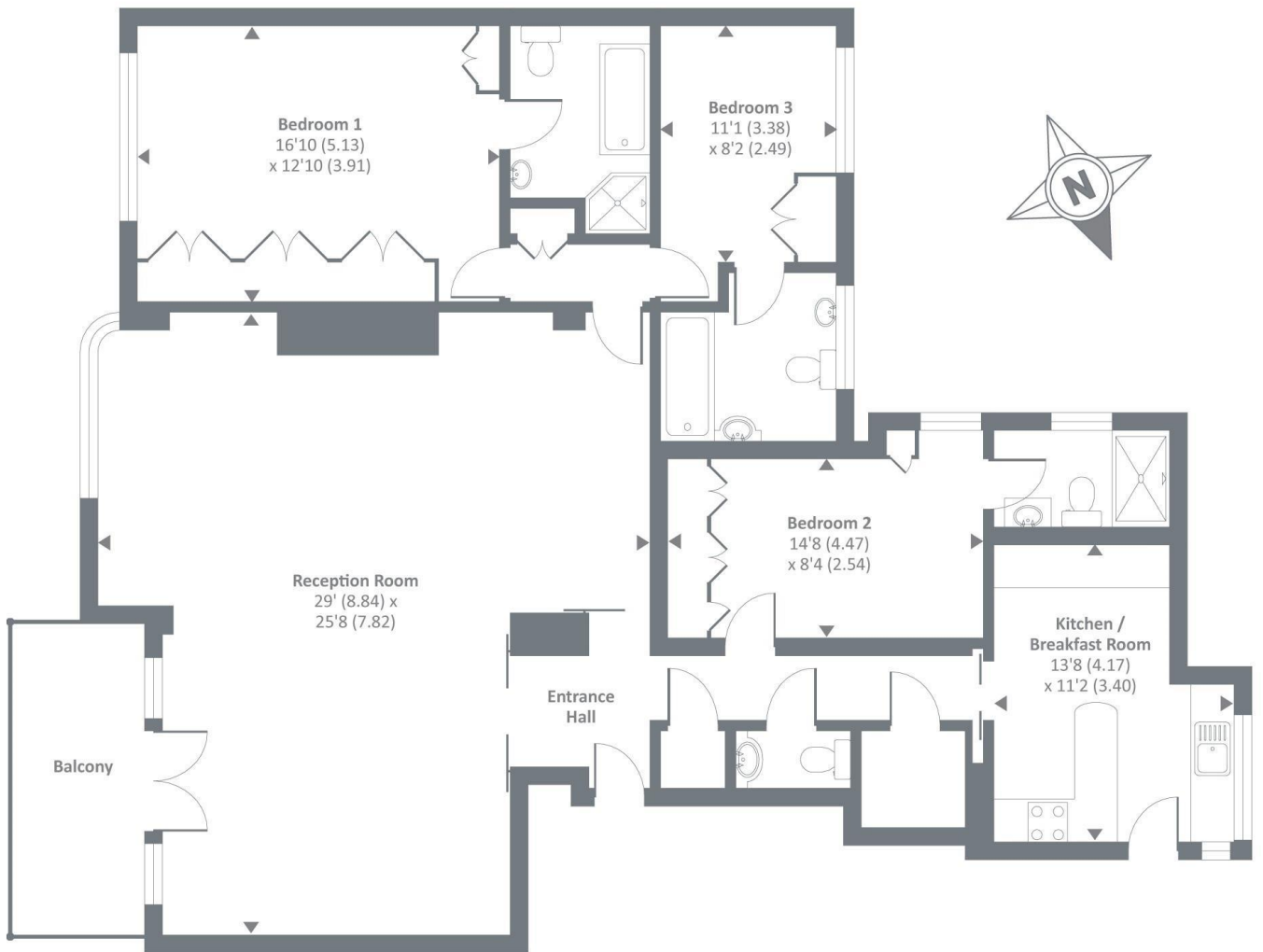
Master Bedroom with En-Suite Bathroom | Second Bedroom with En-Suite Bathroom
| Third Bedroom | Bathroom | Kitchen/Breakfast Room | Double Reception Room |
Balcony | Communal Roof Terrace | Communal Heating & Hot Water | Passenger
Lift | Portorage | Two Underground Parking Spaces

winkworth.co.uk/st-johns-wood

Winkworth

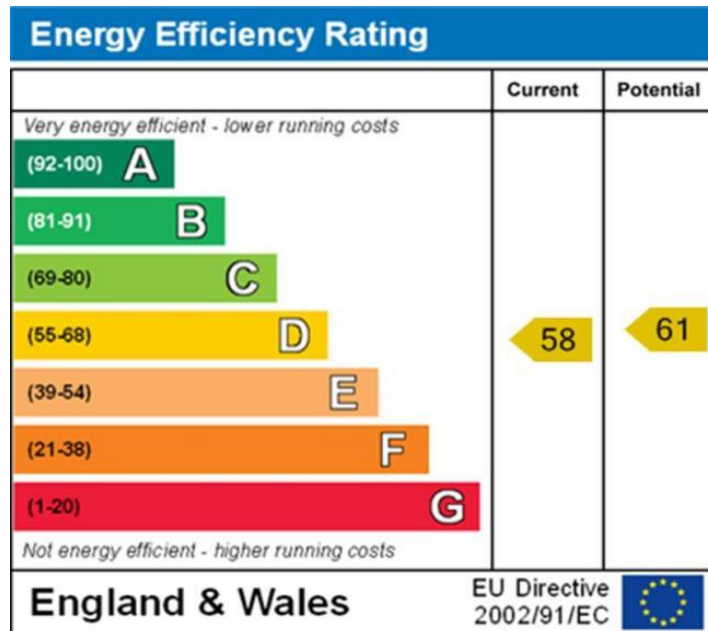
See things differently.





First floor

Approx. Gross internal floor area 1582 SQFT / 147 SQM
 Copyright nichecom.co.uk 2013



NB: These particulars are not an offer or contract, nor part of one. You should not rely on statements by Winkworth in the particulars or by word of mouth or in writing "information" as being factually accurate about the property, its condition or its value. Neither Winkworth nor any joint agent has any authority to make any representations about the property, and accordingly any information given is entirely without responsibility on the part of the agents, seller(s) or lessor(s). These particulars are prepared on the basis of the information supplied by our client and are a rough guide for information only. The photographs show only certain parts of the property. We are not able to check all of the information and therefore are unable to guarantee accuracy. All interested parties are therefore advised to undertake all necessary inspections and checks that they deem appropriate. Where displayed, the square footage is taken from the floor plans, which are created by an independent supplier. These measurements are approximate and included for illustrative purposes only. The measurements may vary. Winkworth does not make any representation as to the accuracy of these measurements and you should seek to verify them for yourself. Winkworth accept no liability for any loss you may suffer if you rely on these measurements. All fixtures and fittings, whether fitted or not are deemed removable by the vendor unless stated. Any reference to alterations to, or use of, any part of the property does not mean that any necessary planning, building regulations or other consent has been obtained. Amenities and appliances have not been tested.

St John's Wood | 103-104 St John's Wood Terrace, London NW8 6PL
020 7586 7001 | stjohnswood@winkworth.co.uk