



- Ground Floor Apartment
- Two Bedrooms
- Warden Controlled
- No Chain

18 Maplebeck Court, Lode Lane, Solihull, B91 2UB

The opportunity has arisen to present this smartly presented warden controlled GROUND FLOOR 2 Bedroom apartment with NO CHAIN. Conveniently placed for Solihull and Touchwood Shopping Centre the location is perfect to take advantage of Bus Routes as well as local Rail links. We would strongly recommend internal inspection to fully appreciate the accommodation which includes : Entrance Hall with Intercom System, Sitting Room twith Dining Area, Fitted Kitchen, Two Good Sized Bedrooms, Bathroom, Communal Facilities, Landscaped Grounds and Car Parking.



Property Description

DETAILS

A communal entrance hall with security intercom system leads to this well maintained ground floor apartment. The reception hall has a useful storage cupboard and Airing Cupboard off, a door to the bathroom which is fitted with a white suite, and the two bedrooms (one having fitted wardrobes). A further door leads to the good sized lounge with a dining area and the kitchen which has a range of wall and base units.

The apartment has the benefit of electric storage heating, double glazing and emergency pull cords to request warden assistance. There are also shared communal facilities including a resident's lounge area and utility.

OUTSIDE

The apartments enjoy the benefit of landscaped communal grounds with a seating area and there is also car parking available.

TENURE

We have been advised that the property is Leasehold but you should check this with your legal advisor before exchanging contracts.

VIEWING

At short notice with DM & Co. Homes on 0121 775 0101 or by email sales@dmandcohomes.co.uk



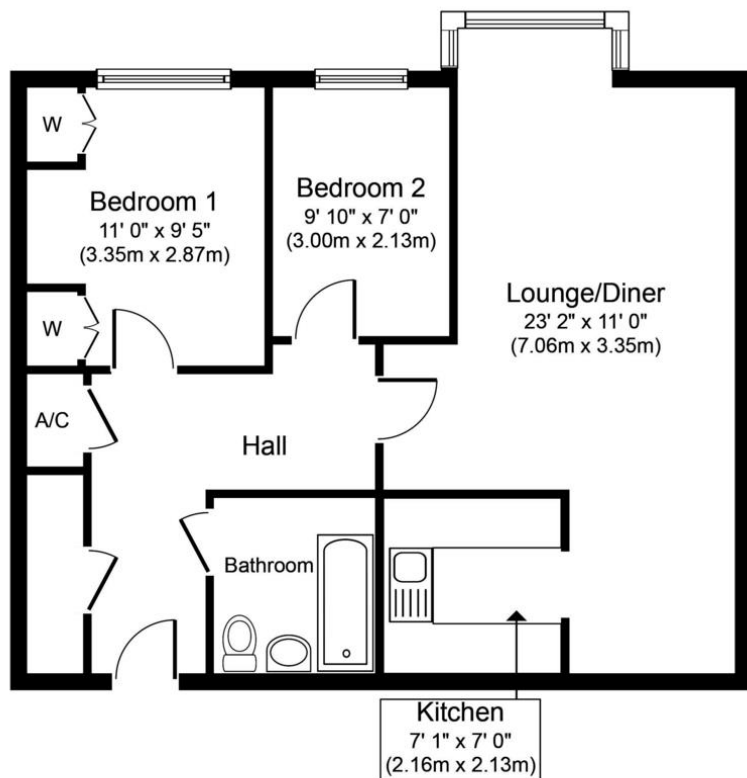


PROPERTY TO SELL

Call DM & Co. Homes on 0121 775 0101 to arrange your FREE no obligation market appraisal and find out why we are Solihull's fastest growing Estate Agency.



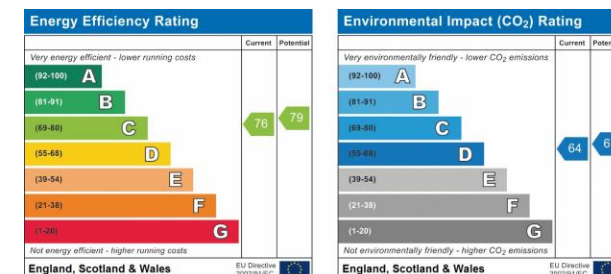
Agents Note: Whilst every care has been taken to prepare these sales particulars, they are for guidance purposes only. All measurements are approximate are for general guidance purposes only and whilst every care has been taken to ensure their accuracy, they should not be relied upon and potential buyers are advised to recheck the measurements



Approximate Floor Area
665 sq. ft.
(61.8 sq. m.)

Whilst every attempt has been made to ensure the accuracy of the floor plan contained here, measurements of doors, windows, rooms and any other items are approximate and no responsibility is taken for any error, omission, or mis-statement. This plan is for illustrative purposes only and should be used as such by any prospective purchaser or tenant. The services, systems and appliances shown have not been tested and no guarantee as to their operability or efficiency can be given.

Copyright V360 Ltd 2019 | www.houseviz.com



DM&Co.
HOMES

Call us now 0121 775 0101
www.dmandcohomes.co.uk
sales@dmandcohomes.co.uk

rightmove

onTheMarket.com

Zoopla.co.uk