



MILE



Burns Road, Harlesden NW10

£1,850 pcm

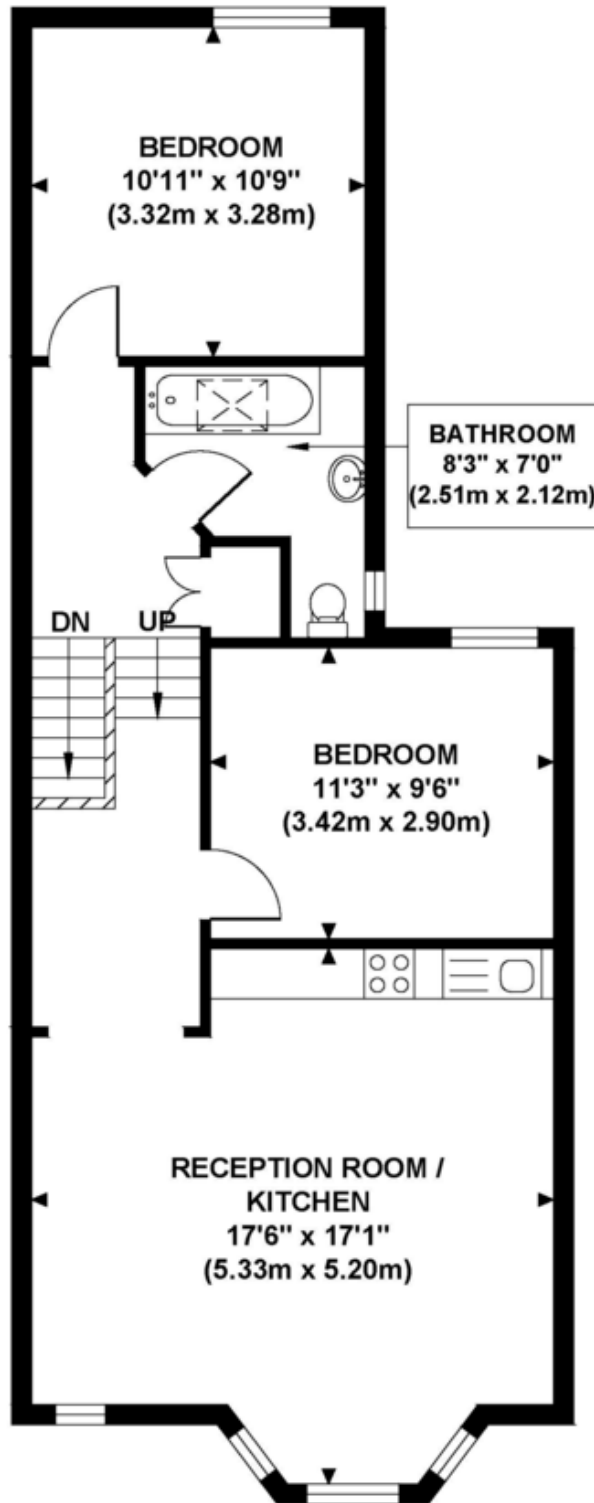
Mile are delighted to introduce to the market this superb first floor apartment set within this Victorian conversion and situated in this quiet residential road. The property has been newly refurbished to a very high standard and benefits from a lovely reception room with a contemporary fully fitted open-plan kitchen, two double bedrooms and a modern three piece bathroom with its sky light. This fantastic apartment benefits from double glazed windows throughout, wood flooring, high ceilings and an abundance of storage space and natural light. Offered on an unfurnished basis, the property is mid January. Burns Road is ideally positioned close to all the local amenities of Harlesden and within easy reach of a wide selection of shops, bars and restaurants of Willesden Junction. Maple Walk school and Roundwood Park open space are only a few minutes walk from the property. The nearest station is Harlesden (Bakerloo line / Overground).

EPC Rating: C

- Fantastic first floor apartment
- Two double bedrooms
- Recently refurbished to a high standard
- Fantastic location
- Available mid January
- Offered unfurnished
- Superb open-plan kitchen / living-room
- Double glazed windows
- Bright and airy
- Close to shops and transport

BURNS ROAD

Approximate Gross Internal Area
682 sq ft / 63.36 sq m



**GROUND FLOOR
GROSS INTERNAL
FLOOR AREA 23 SQ FT**

**FIRST FLOOR
GROSS INTERNAL
FLOOR AREA 659 SQ FT**

MONEY LAUNDERING REGULATIONS 2003: Intending purchasers will be asked to produce identification documentation at a later stage and we would ask for your co-operation in order that there will be no delay in agreeing the sale.

General: While we endeavour to make our sales particulars fair, accurate and reliable, they are only a general guide to the property and, accordingly, if there is any point which is of particular importance to you, please contact the office and we will be pleased to check the position for you, especially if you are contemplating travelling some distance to view the property.

Measurements: These approximate room sizes are only intended as general guidance. You must verify the dimensions carefully before ordering carpets or any built-in furniture.

Services: Please note we have not tested the services or any of the equipment or appliances in this property, accordingly we strongly advise prospective buyers to commission their own survey or service reports before finalising their offer to purchase.