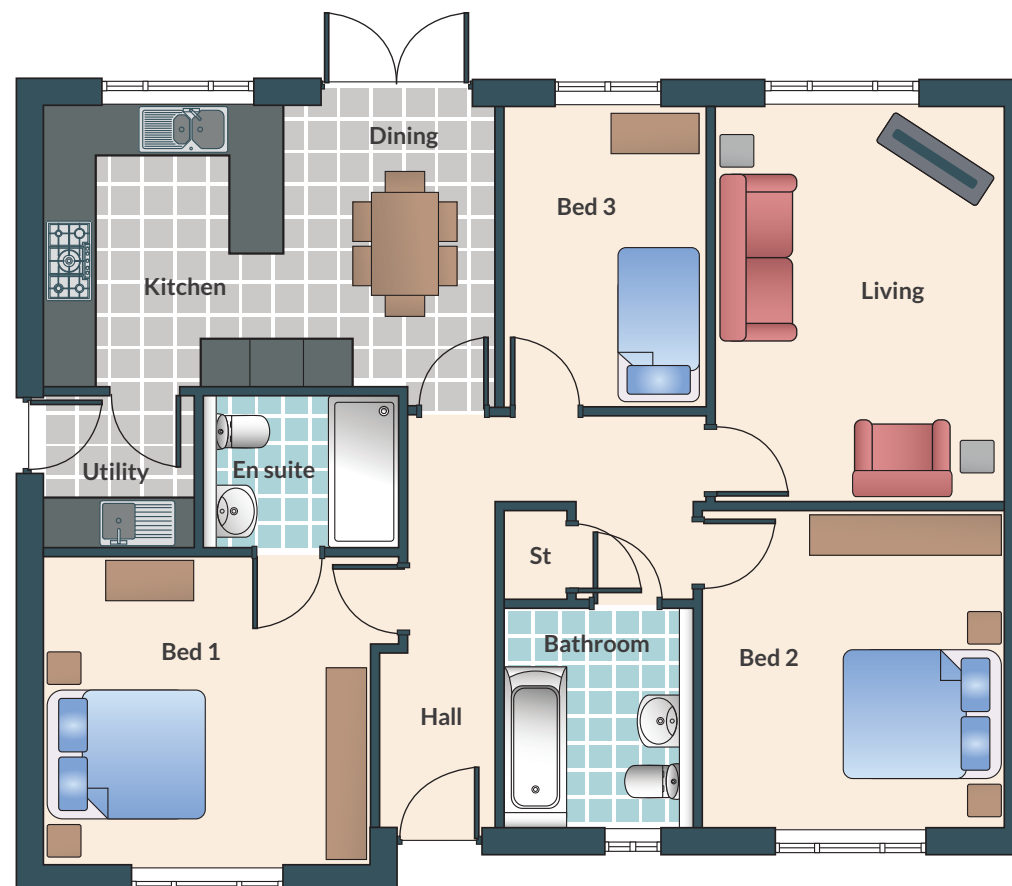


The Claydon | 3 Bedroomed Bungalow



This highly desirable detached three-bedroom bungalow is the epitome of luxury. The Claydon boasts landscaped gardens, patio area, blocked paved driveway and detached garage.

The large open plan kitchen/dining area features designer kitchen furniture set beneath elegant work surfaces incorporating an inset 1.5 bowl stainless steel sink. A range of built in appliances including double oven, microwave, stylish gas hob with stainless chimney hood, integrated fridge/freezer and dishwasher as standard. In addition, The Claydon has an en-suite shower room leading off the master bedroom and luxurious family bathroom fitted with contemporary suites and luxurious tiles.



Kitchen / Dining	5150 x 3250	16'10" x 10'8"
Utility	1650 x 1700	5'4" x 5'6"
Living	4600 x 3350	15'1" x 10'11"
Bedroom 1	3600 x 3750	11'9" x 12'3"

Ensuite	2200 x 1650	7'2" x 5'4"
Bedroom 2	3650 x 3500	11'11" x 11'5"
Bedroom 3	2300 x 3450	7'6" x 11'3"
Bathroom	2150 x 2500	7' x 8'2"



To make an appointment with our sales representative:

Tel: 01246 57 57 44 • Email: sales@woodallhomes.co.uk

www.woodallhomes.co.uk



Please Note: Wall and roof finishes vary, refer to finishes schedule. Handing may vary and some plots have detached single garage. Refer to site plan and finishes schedule. All images are for illustrative purposes and should be treated as guidance only.