



SPRINGFIELD COURT

HARROGATE

Welcome to Springfield Court

Springfield Court is an exclusive development located in the heart of Harrogate.

The development will provide 61 bespoke one, two and three bedroom luxury apartments with private parking within a secured courtyard.

The existing building has been transformed into apartment numbers 1 - 35 and offer a fantastic selection of luxury apartments with a variety of benefits, such as outdoor space and three lifts directly serving each floor.



"We are very pleased to introduce Springfield Court which is a unique mix of new build and conversion units. This is Newby's third town centre development in recent years and it is undoubtedly one of the largest town centre schemes to be delivered in Harrogate for a long time.

Newby has worked very closely with the architects and the local council to deliver this fantastic living space, with private parking and a great number of units with useable outside space. The specification continues to evolve and these luxury units will exceed expectations."

Nick Moody - Newby



Luxury Living



Development front showcasing apartments 1-35

Set in the heart of Harrogate

Springfield Court is located on King's Road, an area regarded as one of the best locations in Harrogate, with an abundance of excellent restaurants, bars and shops nearby.

Along with this exclusive location, each apartment has highly refined specifications, including ultra-modern bespoke kitchens and Vessini bathroom suites. The majority of the apartments also benefit from their own private terraces or balconies.



Balconies to apartments 4, 5, 7 & 8



Ground floor garden apartments

Site Plan



Springfield Court, Springfield Avenue, Harrogate HG1 2HW

With peace of mind through security, and the town centre within walking distance, Springfield Court is the most desirable and exclusive place to live in Harrogate, with a choice of two individually designed buildings, each with unique features.

- SC1 - Apartments 1 - 35
- SC2 - Apartments 36 - 61



The Apartments

Feel at home

Each apartment has been carefully designed with walnut veneer doors and high-quality wooden flooring to give an elegant touch throughout each home.

Security plays an important role and every effort has been made to keep the apartments secure, including electric gates to the entrance, video entry phones and intruder alarms to all apartments. A further benefit of Springfield Court is the outside space available to the majority of the apartments, including garden terraces and balconies, which is a rarity in apartments in the heart of Harrogate.



Superb Entertaining Space

Kitchen

High quality finishes, space and natural light flow seamlessly throughout every apartment at Springfield Court.

The kitchens are designed to the highest standards, with soft close cabinets, bespoke counter tops and a matching illuminated splashback. Premium Neff appliances, such as the "Slide and Hide" oven, create the final touches to this sophisticated and contemporary living space.





Bedrooms, Bathrooms & WC's

The bedrooms at Springfield Court have been designed with both luxury and relaxation in mind. Neutral carpets and generous windows complete these rooms for a light and airy finish.

The bathrooms have been fully tiled from floor to ceiling and include underfloor heating to the main bathroom and en-suite. This excellent specification has been enhanced with chrome heated towel rails, under basin storage, feature lighting and Vessini bathroom furnishings throughout.

Harrogate



On Your Doorstep

Harrogate offers a wide range of amenities all on your doorstep. The Valley Gardens is a must for taking a peaceful and picturesque tree lined walk. This beautiful spa town also provides numerous choices of cafés and restaurants, including the famous Bettys Tea Rooms and The Ivy which recently opened on Parliament Street.

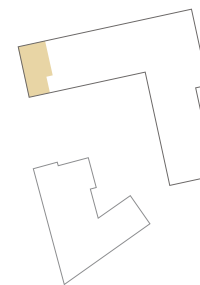
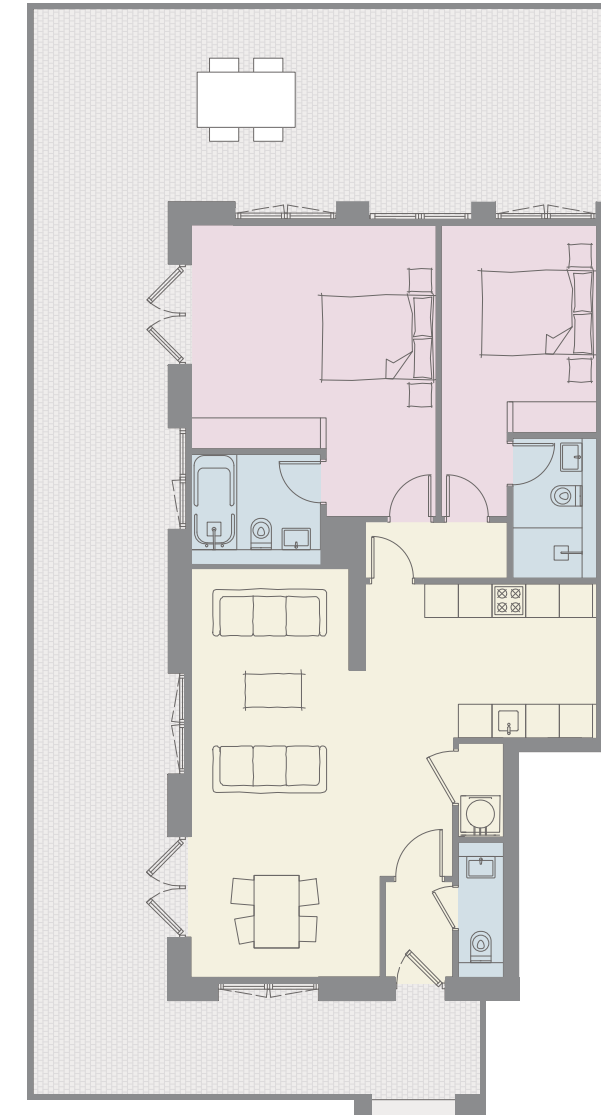
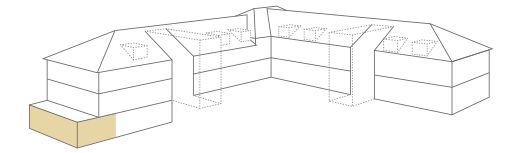
Harrogate is known for being the gateway to the Yorkshire Dales, where you can find numerous countryside walks and further amenities just a few miles from the town centre.



Floor Plans

Apartments 1 - 35

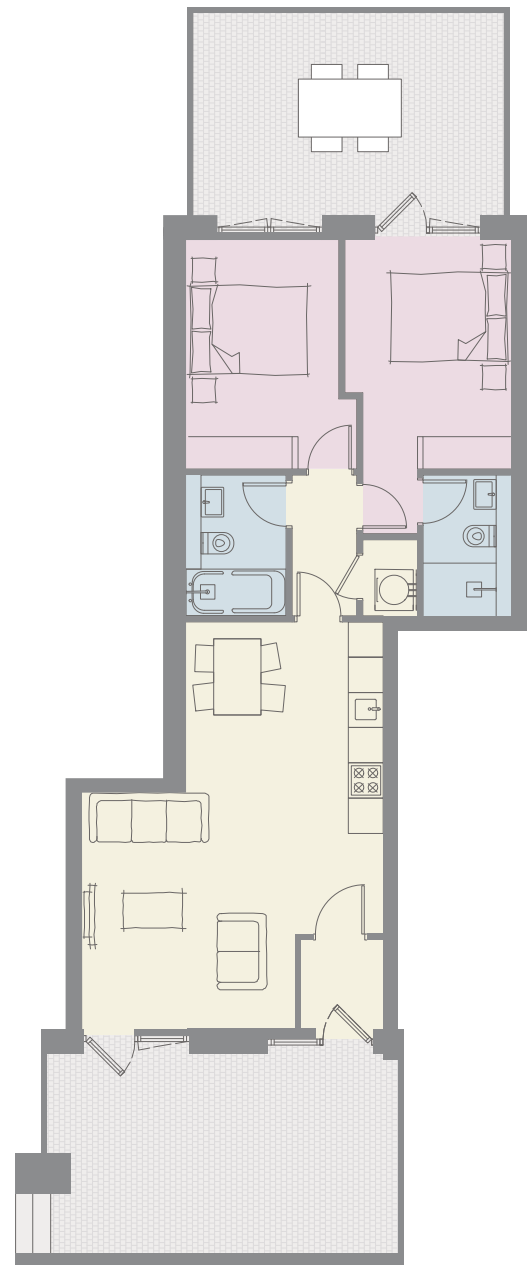
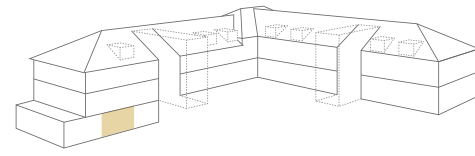
Garden Apartments Apartment 1



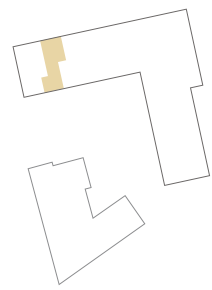
Living/Dining/Kitchen	23' 11" x 23' 8"
Bedroom 1	17' 1" x 14' 4"
En-Suite 1	7' 7" x 5' 7"
Bedroom 2	17' 0" x 9' 0"
En-Suite 2	8' 2" x 4' 1"

IMPORTANT NOTICE: As part of their policy of continuous product development Newby reserves the right to make alterations, amendments or additions to the development or any part of it without prior notice. The plans and dimensions therefore are subject to change and intended for guidance only. All dimensions shown are maximum sizes.

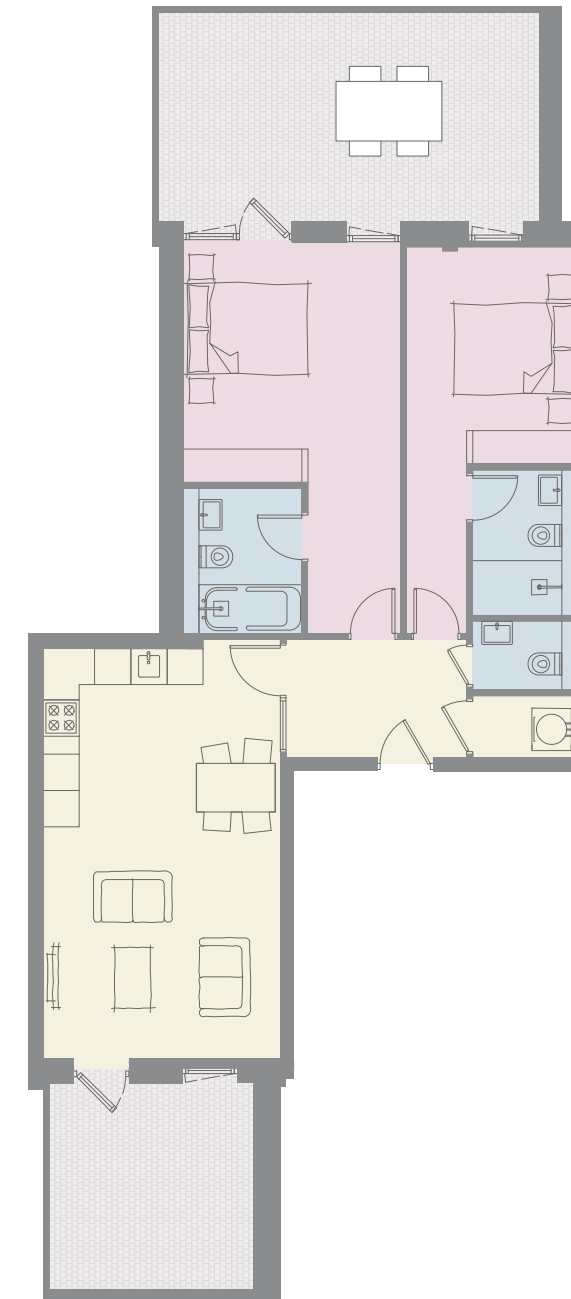
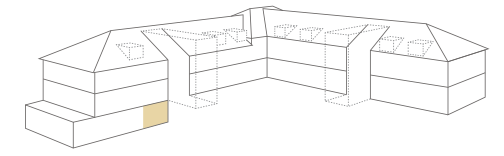
Garden Apartments
Apartment 2



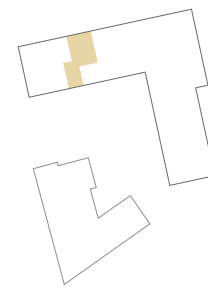
Living/Dining/Kitchen	22' 8" x 17' 0"
Bedroom 1	16' 5" x 9' 3"
En-Suite	7' 10" x 4' 1"
Bedroom 2	12' 10" x 8' 6"
Bathroom	7' 10" x 4' 9"



Garden Apartments
Apartment 3

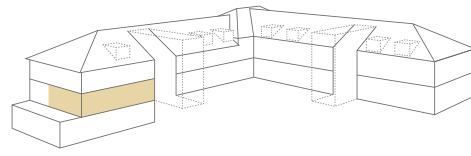


Living/Dining/Kitchen	22' 9" x 12' 10"
Bedroom 1	21' 0" x 11' 9"
En-Suite 1	7' 10" x 5' 7"
Bedroom 2	21' 0" x 9' 3"
En-Suite 2	7' 10" x 4' 10"

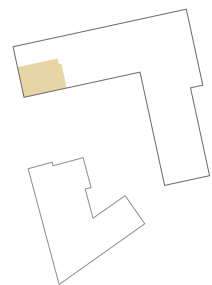
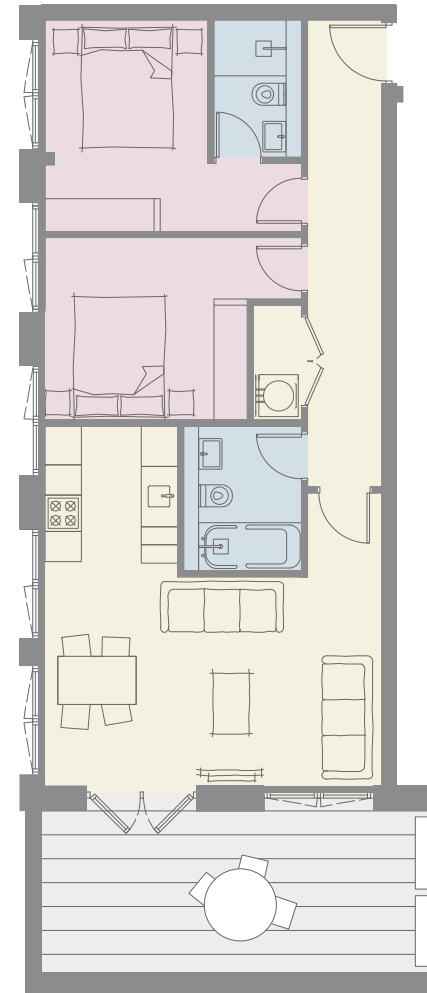
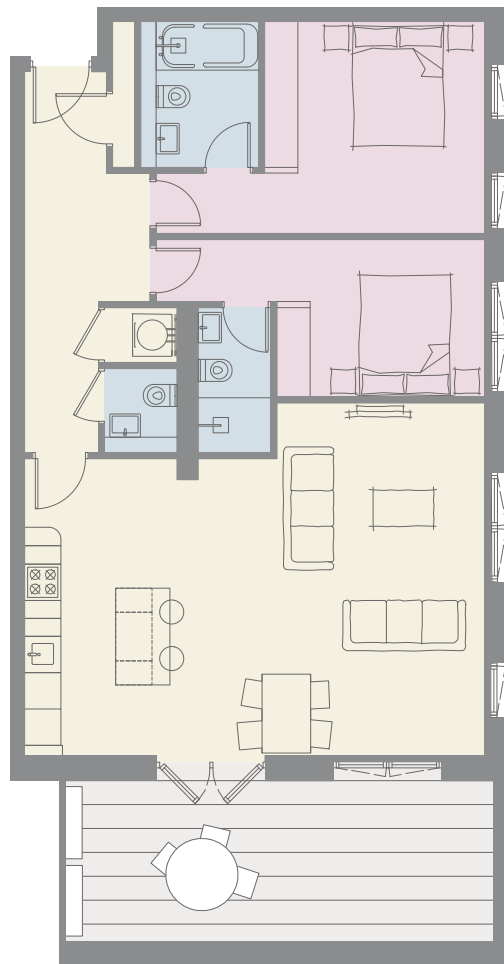
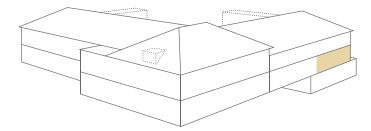


IMPORTANT NOTICE: As part of their policy of continuous product development Newby reserves the right to make alterations, amendments or additions to the development or any part of it without prior notice. The plans and dimensions therefore are subject to change and intended for guidance only. All dimensions shown are maximum sizes.

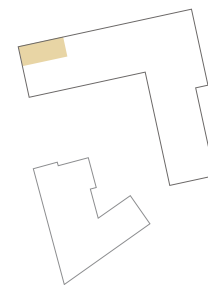
Ground Floor
Apartment 4



Ground Floor
Apartment 5



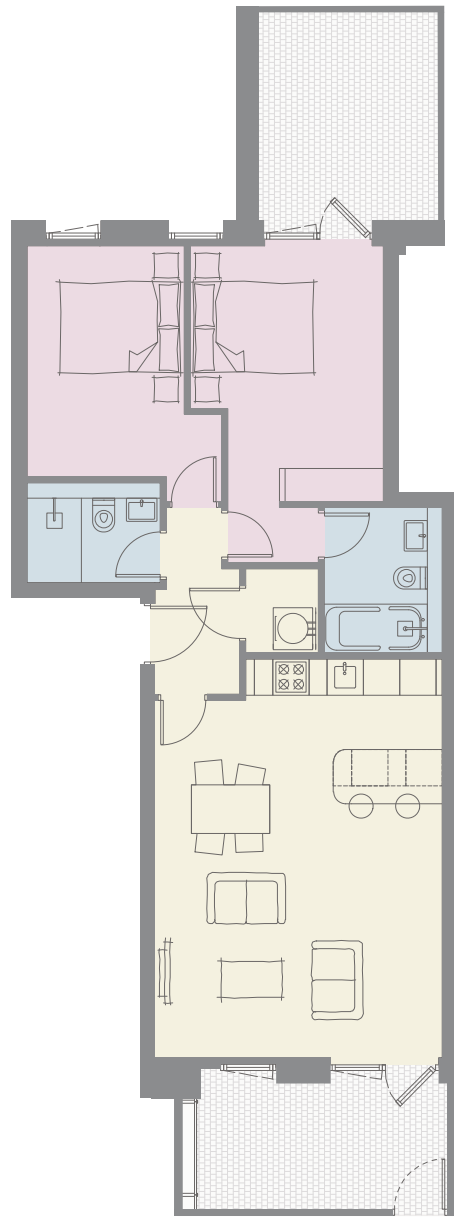
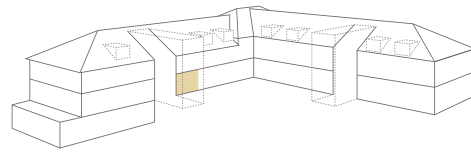
Living/Dining/Kitchen	25' 0" x 19' 1"
Bedroom 1	17' 9" x 11' 6"
En-Suite 1	7' 10" x 5' 7"
Bedroom 2	17' 9" x 8' 6"
En-Suite 2	7' 10" x 3' 11"



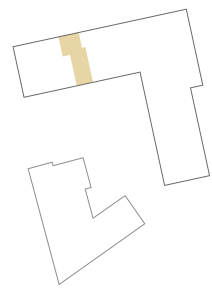
Living/Dining/Kitchen	19' 6" x 18' 3"
Bedroom 1	13' 11" x 11' 6"
En-Suite 1	7' 5" x 3' 11"
Bedroom 2	13' 11" x 9' 11"
Bathroom	7' 10" x 5' 7"

IMPORTANT NOTICE: As part of their policy of continuous product development Newby reserves the right to make alterations, amendments or additions to the development or any part of it without prior notice. The plans and dimensions therefore are subject to change and intended for guidance only. All dimensions shown are maximum sizes.

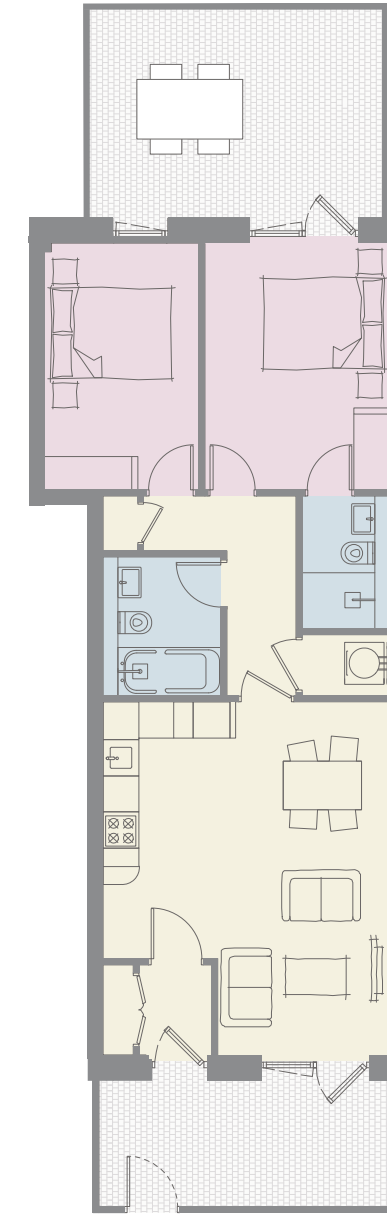
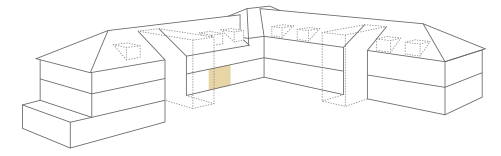
Ground Floor
Apartment 6



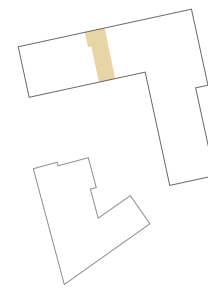
Living/Dining/Kitchen	19' 5" x 15' 7"
Bedroom 1	17' 2" x 10' 6"
En-Suite 1	7' 10" x 5' 7"
Bedroom 2	13' 11" x 8' 6"
Bathroom	7' 3" x 4' 7"



Ground Floor
Apartment 13

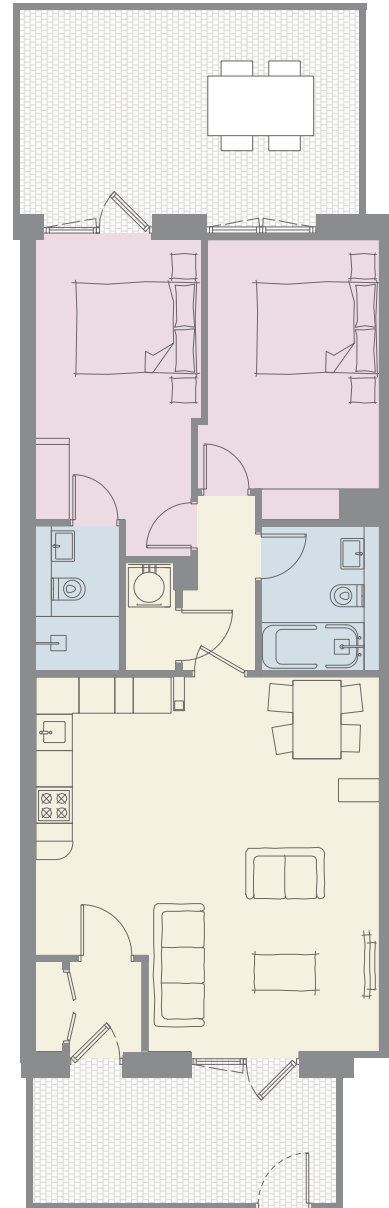
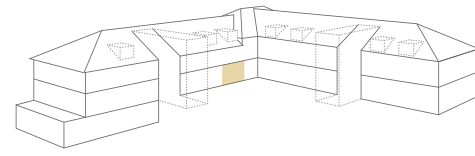


Living/Dining/Kitchen	19' 2" x 15' 7"
Bedroom 1	13' 5" x 10' 1"
En-Suite 1	7' 3" x 3' 11"
Bedroom 2	13' 5" x 8' 5"
Bathroom	7' 7" x 5' 7"

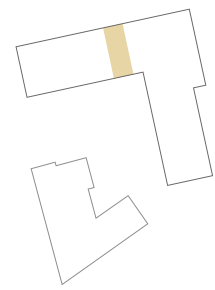


IMPORTANT NOTICE: As part of their policy of continuous product development Newby reserves the right to make alterations, amendments or additions to the development or any part of it without prior notice. The plans and dimensions therefore are subject to change and intended for guidance only. All dimensions shown are maximum sizes.

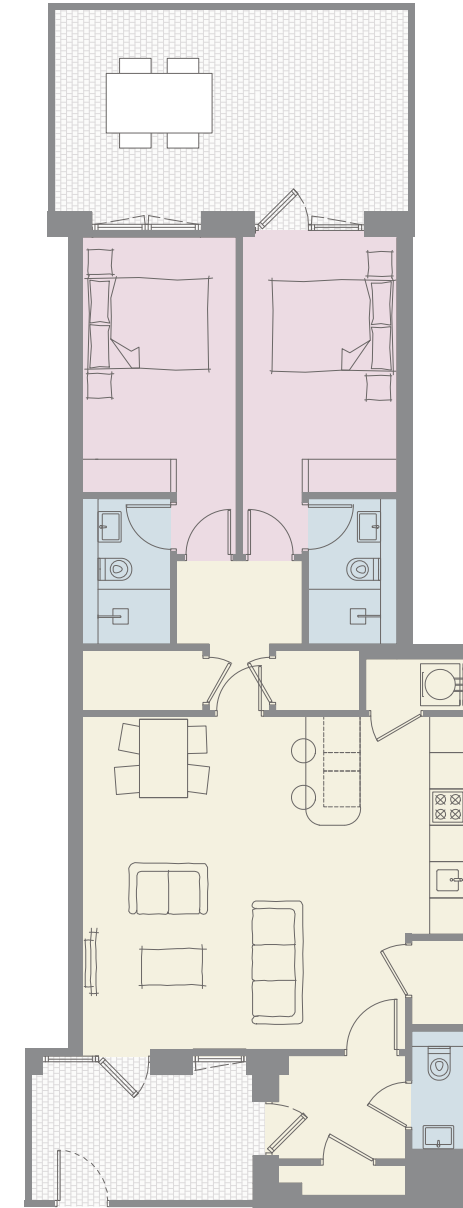
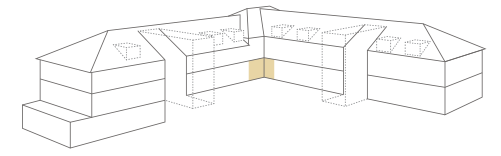
**Ground Floor
Apartment 14**



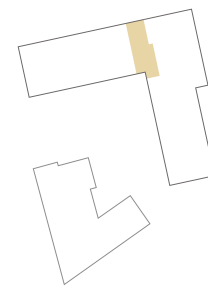
Living/Dining/Kitchen	20' 4" x 18' 7"
Bedroom 1	17' 2" x 8' 11"
En-Suite 1	7' 10" x 4' 6"
Bedroom 2	15' 2" x 9' 4"
Bathroom	7' 10" x 5' 7"



**Ground Floor
Apartment 15**

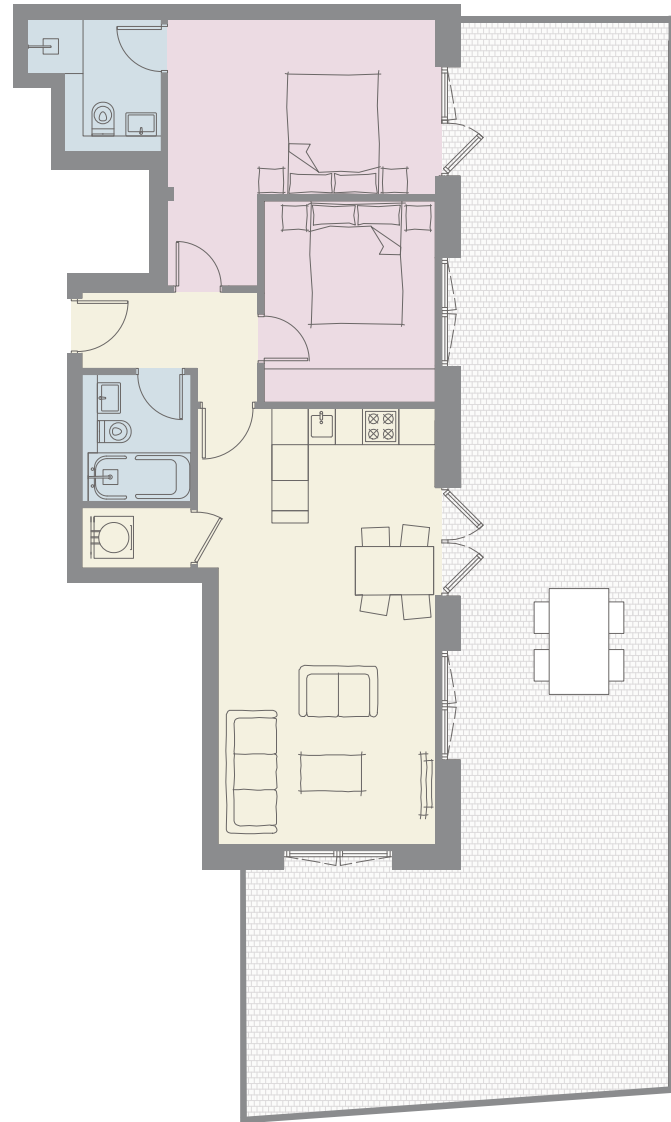
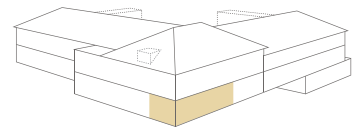


Living/Dining/Kitchen	20' 10" x 18' 1"
Bedroom 1	17' 2" x 8' 5"
En-Suite 1	7' 10" x 3' 11"
Bedroom 2	17' 2" x 8' 2"
En-Suite 2	7' 10" x 4' 9"

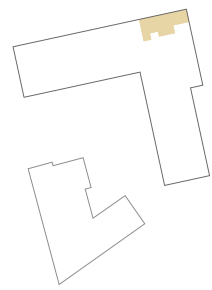


IMPORTANT NOTICE: As part of their policy of continuous product development Newby reserves the right to make alterations, amendments or additions to the development or any part of it without prior notice. The plans and dimensions therefore are subject to change and intended for guidance only. All dimensions shown are maximum sizes.

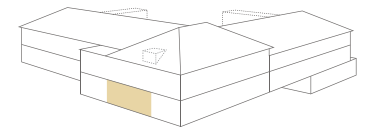
Ground Floor
Apartment 16



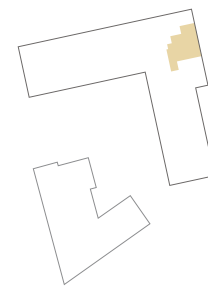
Living/Dining/Kitchen	23' 8" x 12' 11"
Bedroom 1	14' 6" x 9' 6"
En-Suite 1	7' 3" x 6' 4"
Bedroom 2	10' 11" x 9' 3"
Bathroom	6' 11" x 5' 7"



Ground Floor
Apartment 17

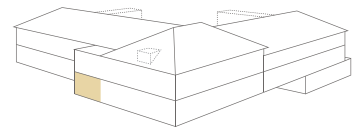


Living/Dining/Kitchen	30' 8" x 22' 0"
Bedroom 1	12' 10" x 9' 6"
En-Suite 1	7' 1" x 4' 10"
Bedroom 2	14' 2" x 9' 3"
Bathroom	7' 3" x 5' 7"

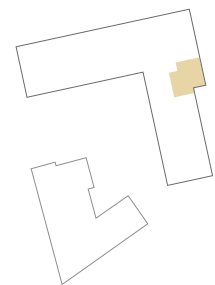
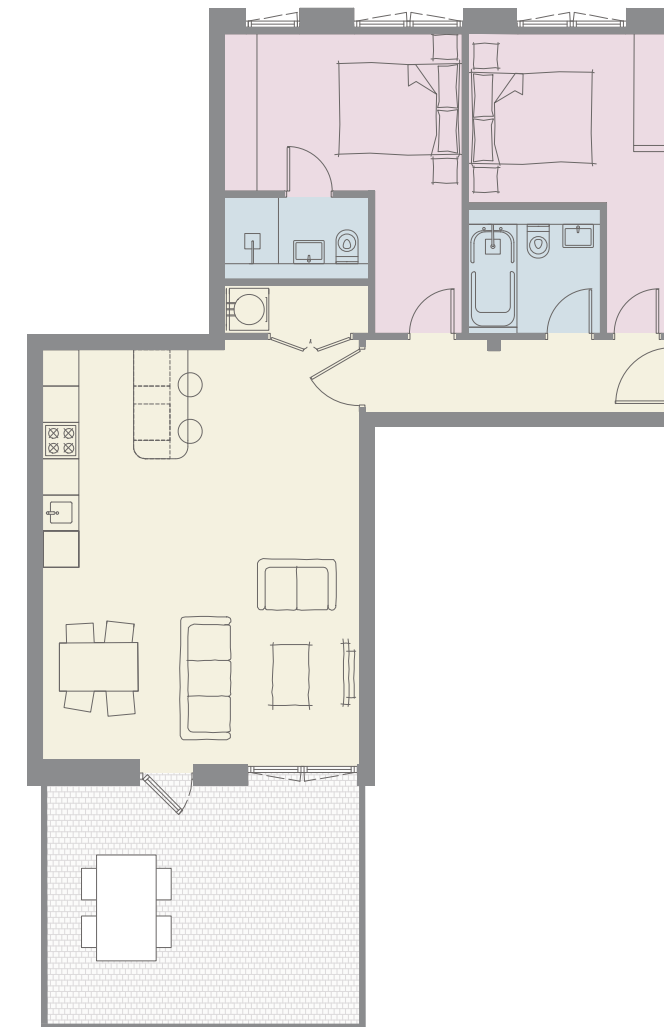
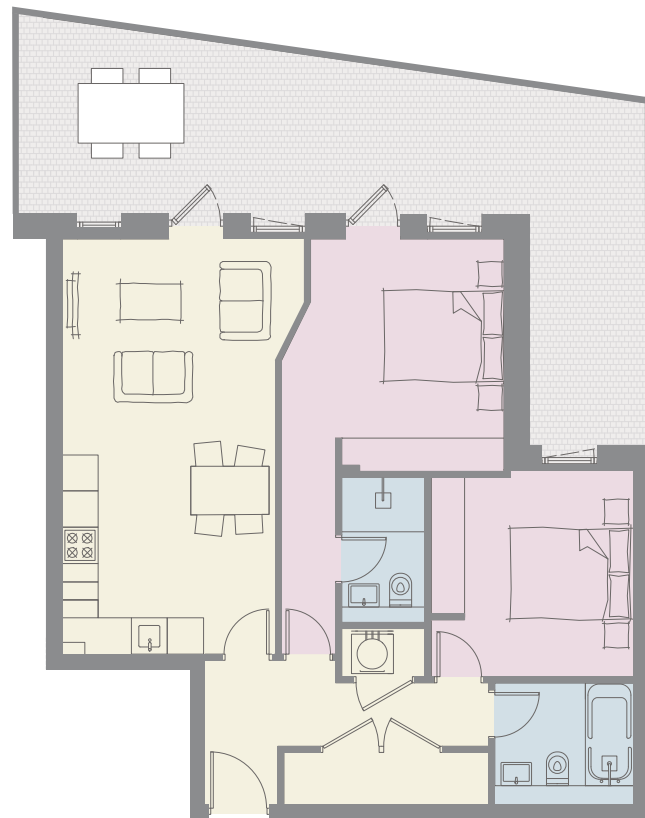
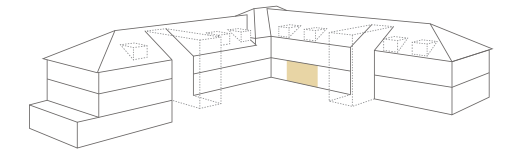


IMPORTANT NOTICE: As part of their policy of continuous product development Newby reserves the right to make alterations, amendments or additions to the development or any part of it without prior notice. The plans and dimensions therefore are subject to change and intended for guidance only. All dimensions shown are maximum sizes.

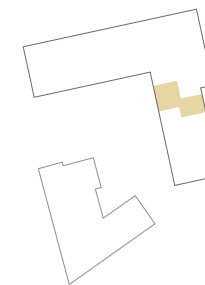
**Ground Floor
Apartment 18**



**Ground Floor
Apartment 19**



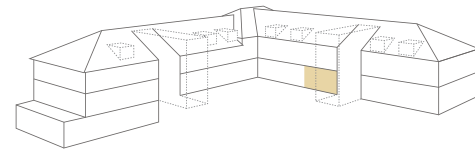
Living/Dining/Kitchen	22' 6" x 13' 2"
Bedroom 1	22' 6" x 10' 6"
En-Suite 1	7' 10" x 4' 7"
Bedroom 2	11' 2" x 11' 0"
Bathroom	7' 7" x 5' 7"



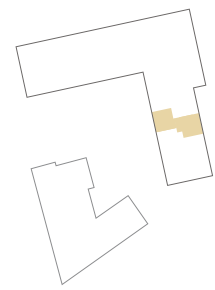
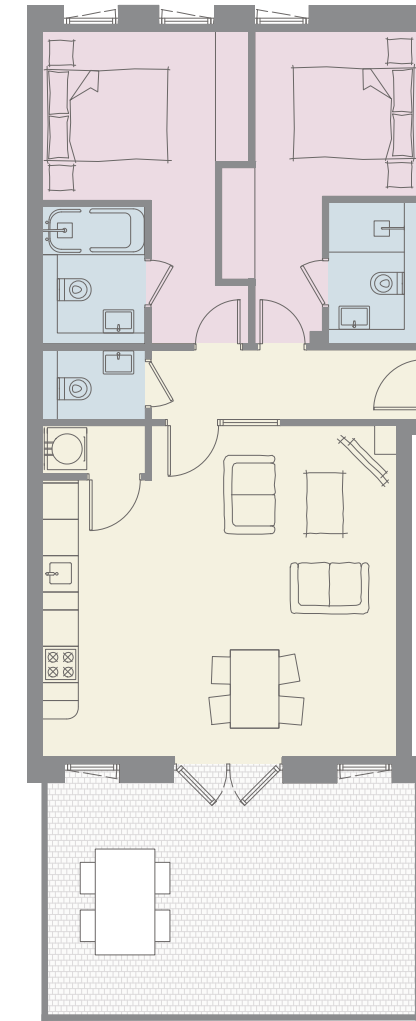
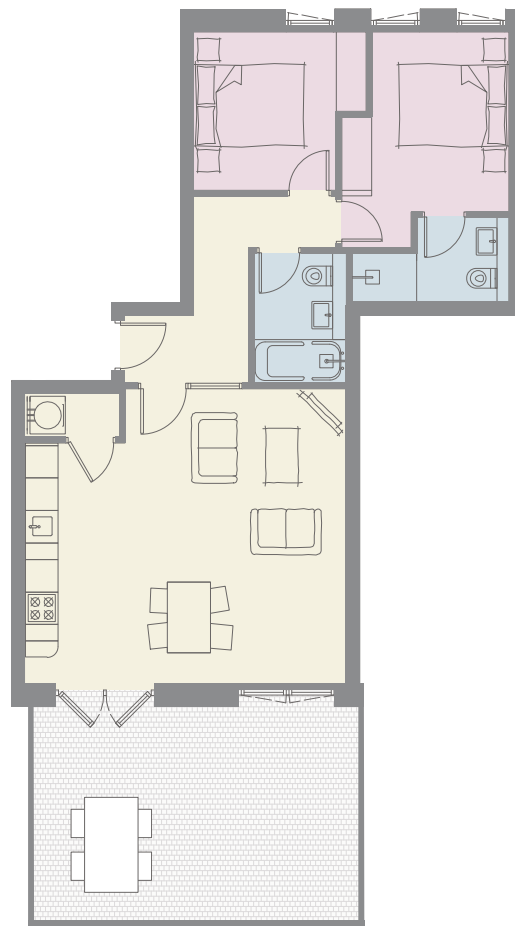
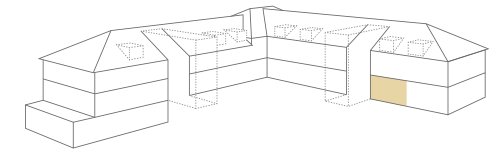
Living/Dining/Kitchen	22' 10" x 17' 2"
Bedroom 1	16' 3" x 12' 11"
En-Suite 1	7' 10" x 3' 7"
Bedroom 2	16' 3" x 10' 9"
Bathroom	7' 2" x 5' 11"

IMPORTANT NOTICE: As part of their policy of continuous product development Newby reserves the right to make alterations, amendments or additions to the development or any part of it without prior notice. The plans and dimensions therefore are subject to change and intended for guidance only. All dimensions shown are maximum sizes.

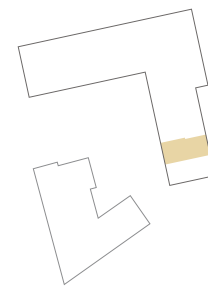
Ground Floor
Apartment 28



Ground Floor
Apartment 29



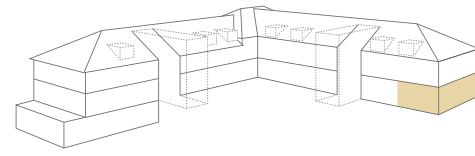
Living/Dining/Kitchen	19' 5" x 17' 10"
Bedroom 1	13' 1" x 10' 1"
En-Suite 1	8' 10" x 5' 1"
Bedroom 2	10' 6" x 9' 7"
Bathroom	7' 10" x 5' 7"



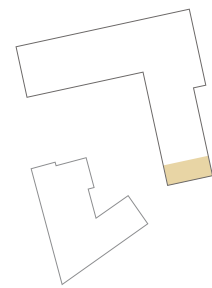
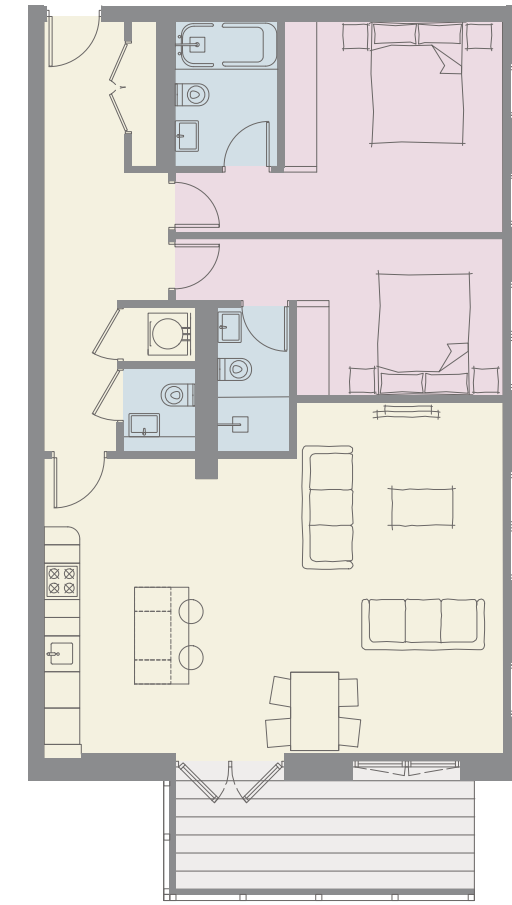
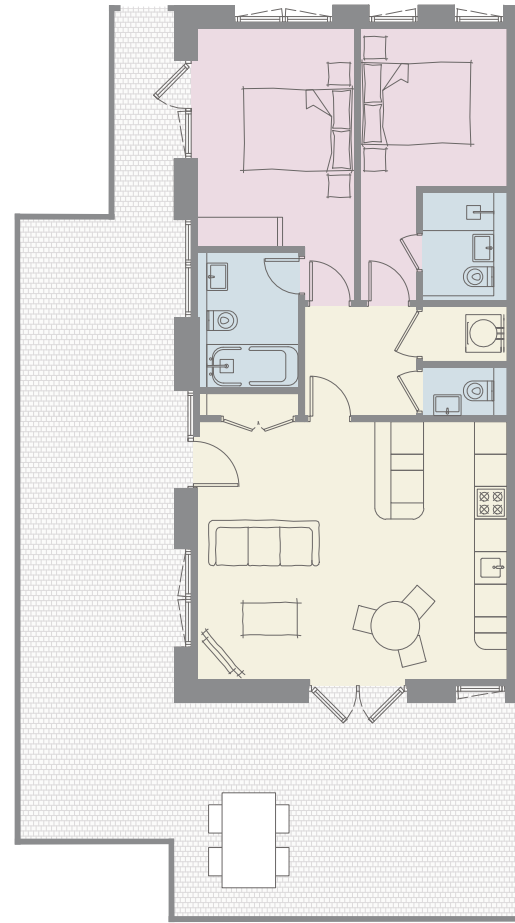
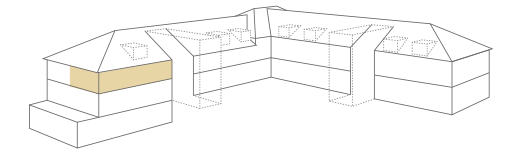
Living/Dining/Kitchen	19' 3" x 18' 0"
Bedroom 1	17' 0" x 11' 3"
En-Suite 1	6' 11" x 5' 7"
Bedroom 2	17' 0" x 10' 9"
En-Suite 2	6' 11" x 4' 1"

IMPORTANT NOTICE: As part of their policy of continuous product development Newby reserves the right to make alterations, amendments or additions to the development or any part of it without prior notice. The plans and dimensions therefore are subject to change and intended for guidance only. All dimensions shown are maximum sizes.

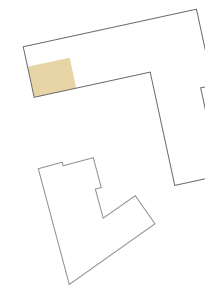
Ground Floor
Apartment 35



First Floor
Apartment 7



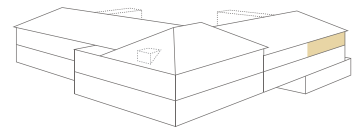
Living/Dining/Kitchen	18' 9" x 15' 7"
Bedroom 1	16' 6" x 9' 6"
En-Suite 1	8' 2" x 5' 7"
Bedroom 2	9' 8" x 8' 11"
En-Suite 2	6' 3" x 4' 4"



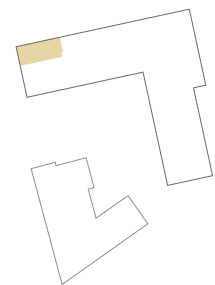
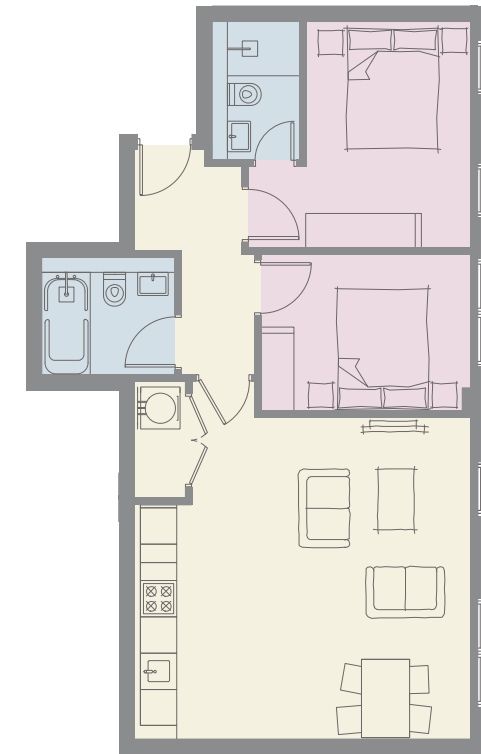
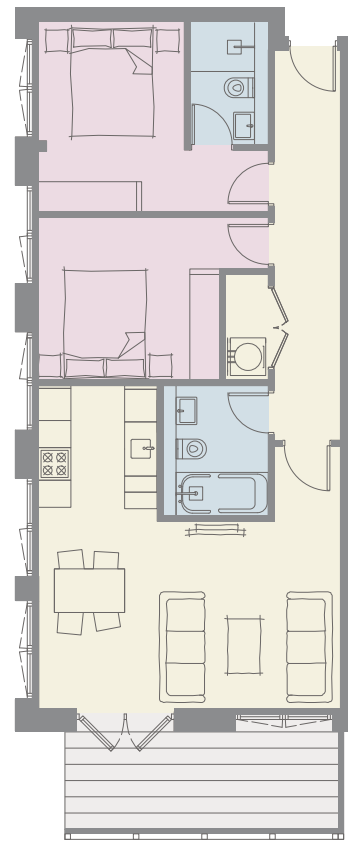
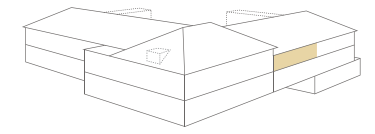
Living/Dining/Kitchen	25' 0" x 19' 1"
Bedroom 1	17' 9" x 11' 6"
En-Suite 1	7' 10" x 5' 7"
Bedroom 2	17' 9" x 8' 6"
En-Suite 2	7' 10" x 3' 11"

IMPORTANT NOTICE: As part of their policy of continuous product development Newby reserves the right to make alterations, amendments or additions to the development or any part of it without prior notice. The plans and dimensions therefore are subject to change and intended for guidance only. All dimensions shown are maximum sizes.

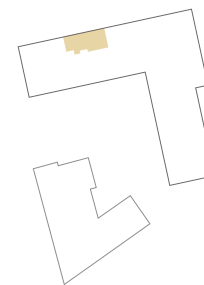
First Floor
Apartment 8



First Floor
Apartment 9



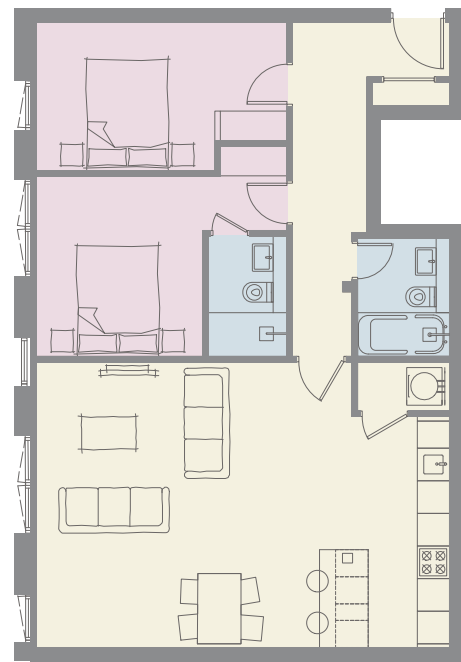
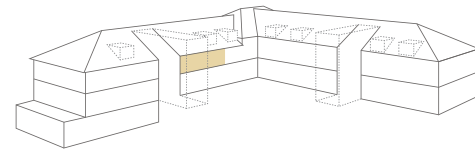
Living/Dining/Kitchen	19' 6" x 18' 3"
Bedroom 1	13' 11" x 11' 6"
En-Suite 1	7' 5" x 3' 11"
Bedroom 2	13' 11" x 9' 11"
Bathroom	7' 10" x 5' 7"



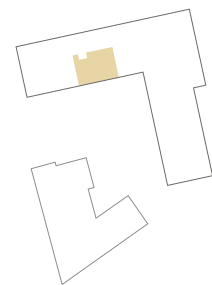
Living/Dining/Kitchen	19' 5" x 18' 6"
Bedroom 1	12' 2" x 12' 1"
En-Suite 1	7' 7" x 3' 11"
Bedroom 2	11' 5" x 8' 6"
Bathroom	7' 3" x 6' 5"

IMPORTANT NOTICE: As part of their policy of continuous product development Newby reserves the right to make alterations, amendments or additions to the development or any part of it without prior notice. The plans and dimensions therefore are subject to change and intended for guidance only. All dimensions shown are maximum sizes.

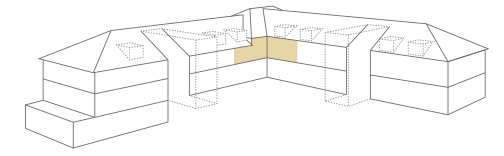
First Floor
Apartment 10



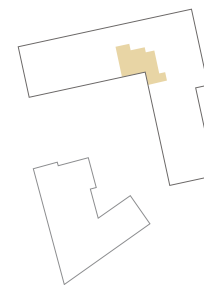
Living/Dining/Kitchen	25' 0" x 17' 3"
Bedroom 1	15' 1" x 10' 11"
En-Suite 1	7' 3" x 4' 9"
Bedroom 2	15' 1" x 9' 0"
Bathroom	7' 1" x 5' 7"



First Floor
Apartment 20

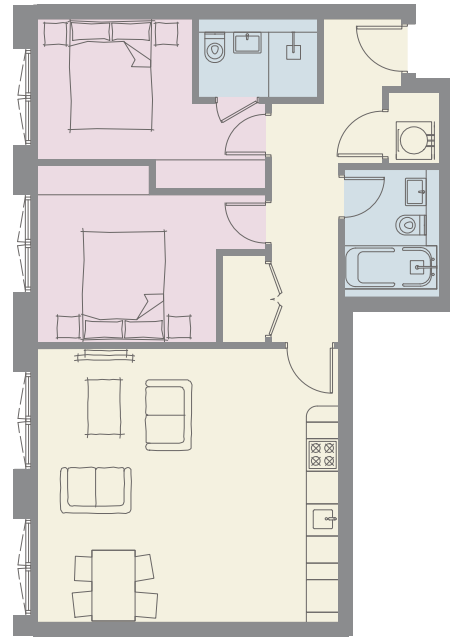
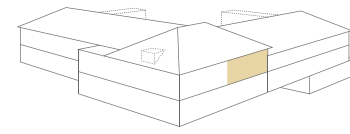


Living/Dining/Kitchen	29' 11" x 15' 9"
Bedroom 1	18' 10" x 9' 9"
En-Suite 1	9' 8" x 4' 4"
Bedroom 2	14' 8" x 8' 11"
Bathroom	7' 7" x 5' 7"

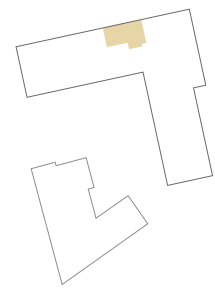


IMPORTANT NOTICE: As part of their policy of continuous product development Newby reserves the right to make alterations, amendments or additions to the development or any part of it without prior notice. The plans and dimensions therefore are subject to change and intended for guidance only. All dimensions shown are maximum sizes.

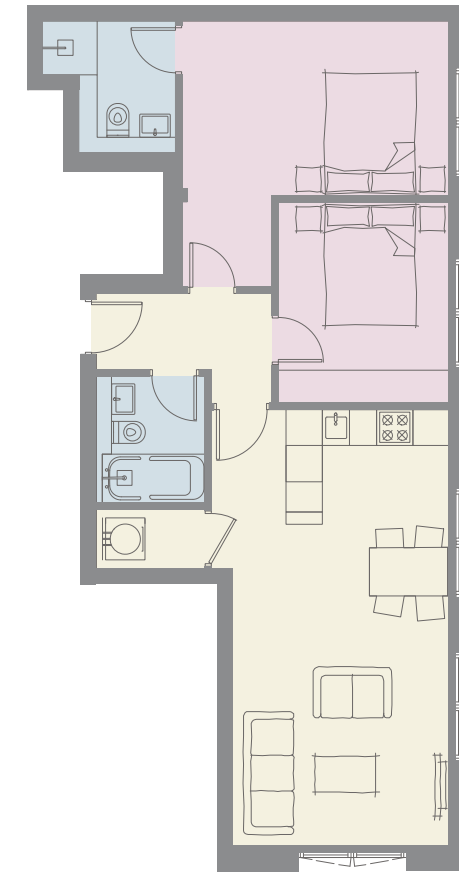
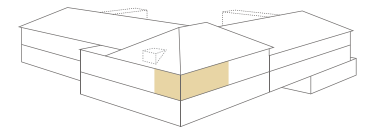
First Floor
Apartment 21



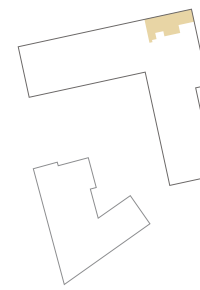
Living/Dining/Kitchen	18' 3" x 16' 7"
Bedroom 1	13' 10" x 10' 4"
En-Suite 1	7' 3" x 3' 11"
Bedroom 2	13' 10" x 10' 9"
Bathroom	7' 3" x 5' 7"



First Floor
Apartment 22

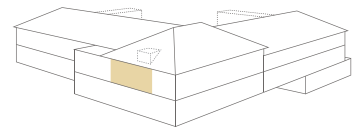


Living/Dining/Kitchen	23' 8" x 12' 11"
Bedroom 1	14' 6" x 9' 6"
En-Suite 1	7' 3" x 6' 4"
Bedroom 2	10' 11" x 9' 3"
Bathroom	6' 11" x 5' 7"

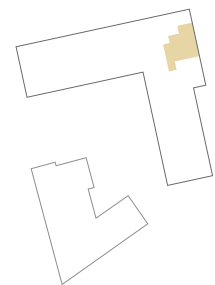
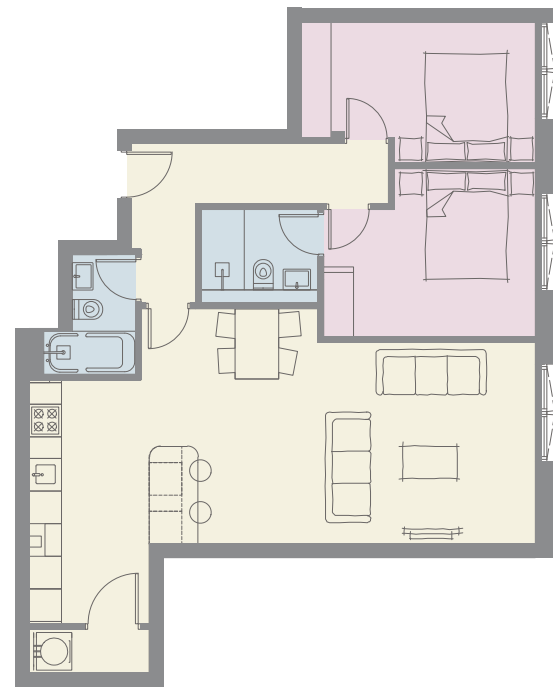
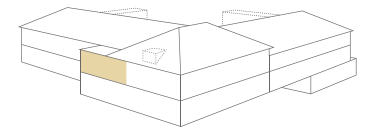


IMPORTANT NOTICE: As part of their policy of continuous product development Newby reserves the right to make alterations, amendments or additions to the development or any part of it without prior notice. The plans and dimensions therefore are subject to change and intended for guidance only. All dimensions shown are maximum sizes.

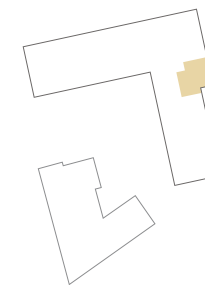
**First Floor
Apartment 23**



**First Floor
Apartment 24**



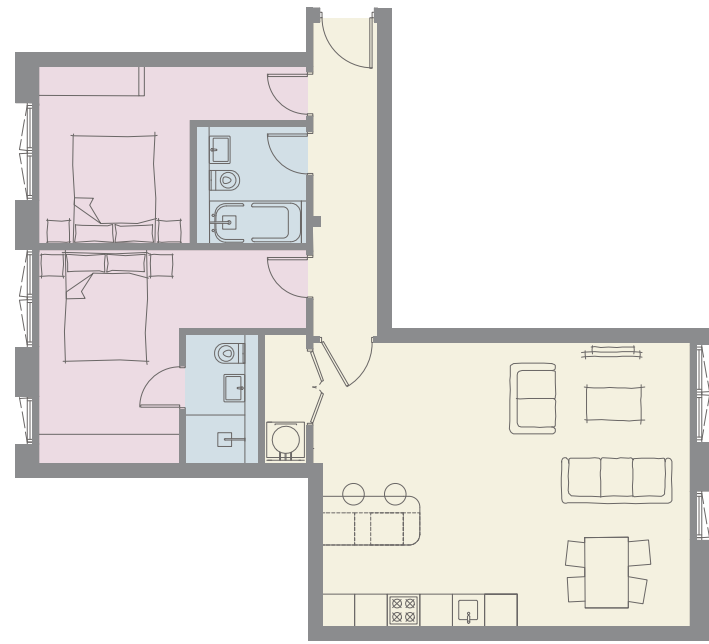
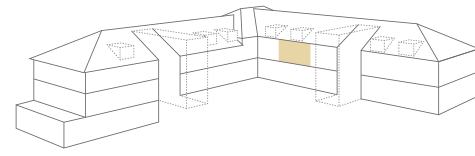
Living/Dining/Kitchen	30' 8" x 22' 0"
Bedroom 1	12' 10" x 9' 6"
En-Suite 1	7' 1" x 4' 10"
Bedroom 2	14' 2" x 9' 3"
Bathroom	7' 3" x 5' 7"



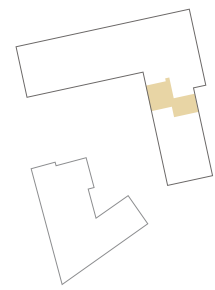
Living/Dining/Kitchen	22' 6" x 13' 2"
Bedroom 1	22' 6" x 10' 6"
En-Suite 1	7' 10" x 4' 7"
Bedroom 2	11' 2" x 11' 0"
Bathroom	7' 7" x 5' 7"

IMPORTANT NOTICE: As part of their policy of continuous product development Newby reserves the right to make alterations, amendments or additions to the development or any part of it without prior notice. The plans and dimensions therefore are subject to change and intended for guidance only. All dimensions shown are maximum sizes.

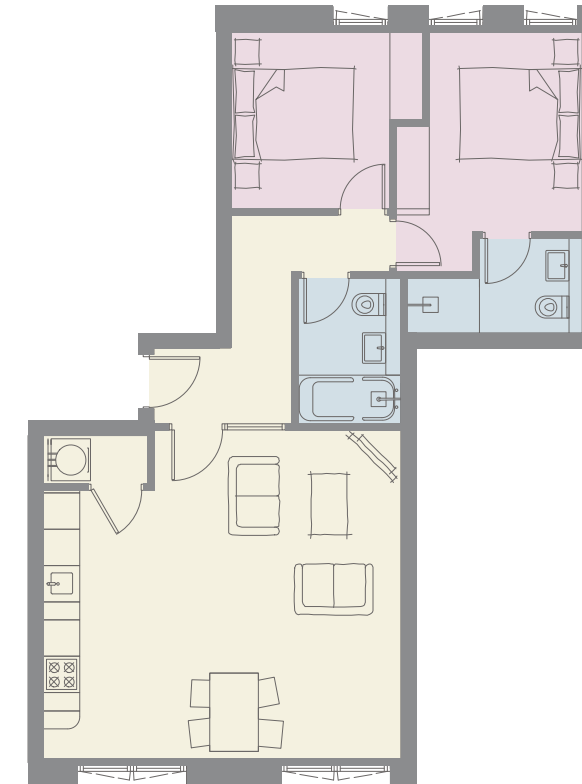
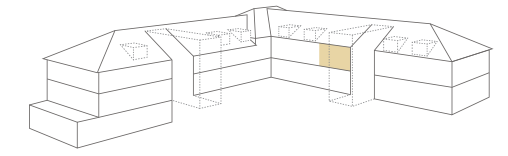
First Floor
Apartment 25



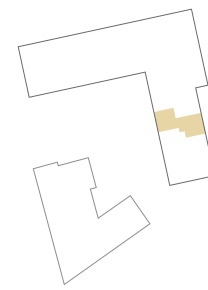
Living/Dining/Kitchen	22' 10" x 17' 2"
Bedroom 1	16' 3" x 12' 11"
En-Suite 1	7' 10" x 3' 7"
Bedroom 2	16' 3" x 10' 9"
Bathroom	7' 2" x 5' 11"



First Floor
Apartment 30

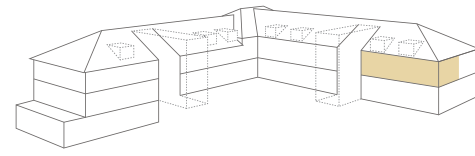


Living/Dining/Kitchen	19' 5" x 17' 10"
Bedroom 1	13' 1" x 10' 1"
En-Suite 1	8' 10" x 5' 1"
Bedroom 2	10' 6" x 9' 7"
Bathroom	7' 10" x 5' 7"

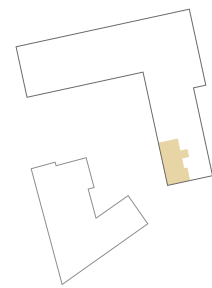
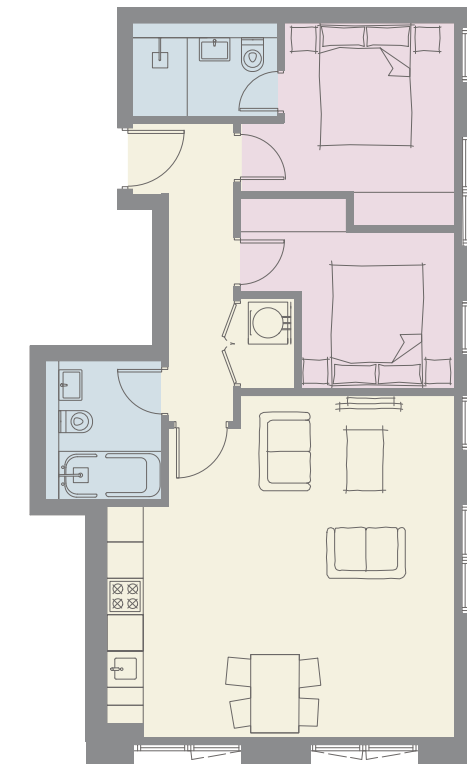
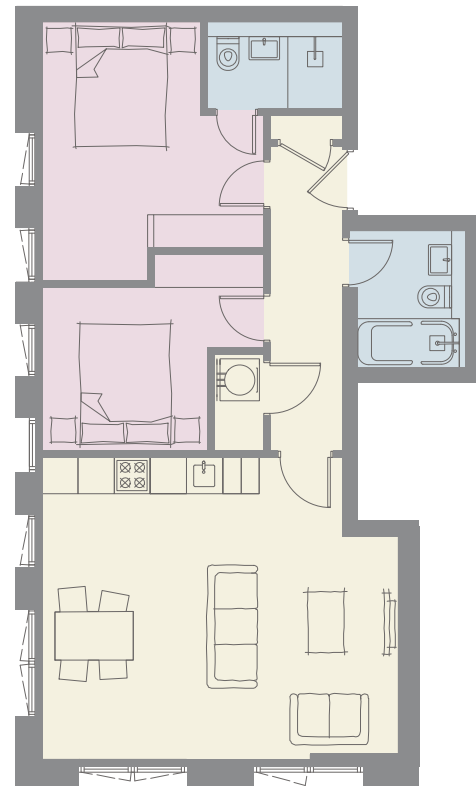
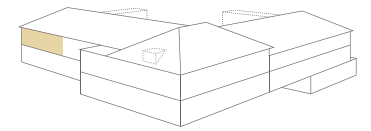


IMPORTANT NOTICE: As part of their policy of continuous product development Newby reserves the right to make alterations, amendments or additions to the development or any part of it without prior notice. The plans and dimensions therefore are subject to change and intended for guidance only. All dimensions shown are maximum sizes.

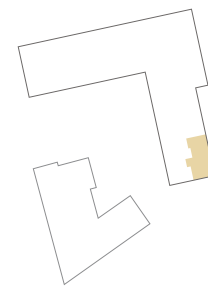
First Floor
Apartment 31



First Floor
Apartment 32



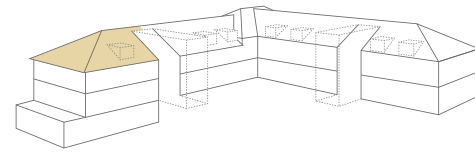
Living/Dining/Kitchen	18' 11" x 18' 6"
Bedroom 1	11' 8" x 11' 0"
En-Suite 1	7' 10" x 4' 3"
Bedroom 2	11' 8" x 10' 4"
Bathroom	7' 7" x 5' 7"



Living/Dining/Kitchen	19' 4" x 16' 5"
Bedroom 1	14' 1" x 12' 1"
En-Suite 1	7' 4" x 3' 11"
Bedroom 2	12' 1" x 10' 8"
Bathroom	7' 4" x 5' 7"

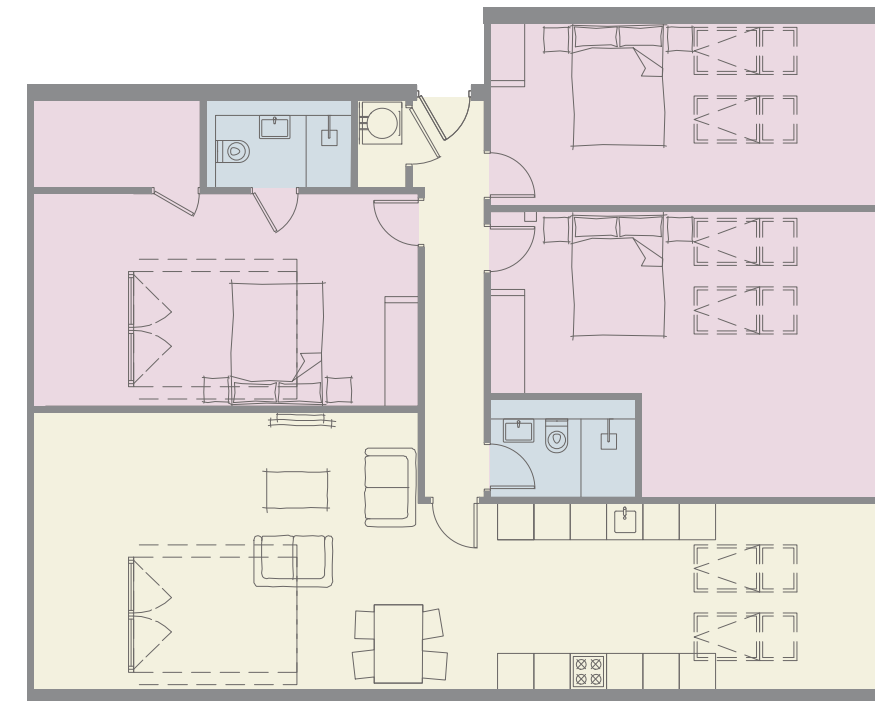
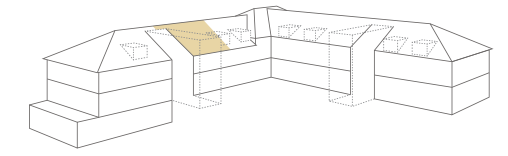
IMPORTANT NOTICE: As part of their policy of continuous product development Newby reserves the right to make alterations, amendments or additions to the development or any part of it without prior notice. The plans and dimensions therefore are subject to change and intended for guidance only. All dimensions shown are maximum sizes.

Second Floor
Apartment 11



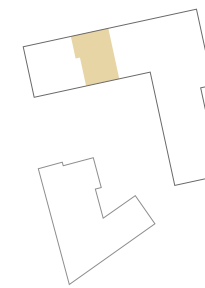
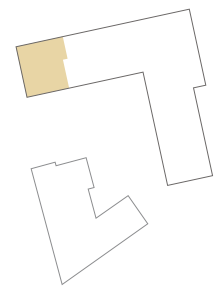
Living/Dining/Kitchen	31' 7" x 17' 1"
Bedroom 1	12' 2" x 9' 7"
En-Suite	7' 10" x 4' 3"
Bedroom 2	12' 2" x 9' 2"
Bathroom	7' 9" x 7' 6"

Second Floor
Apartment 12

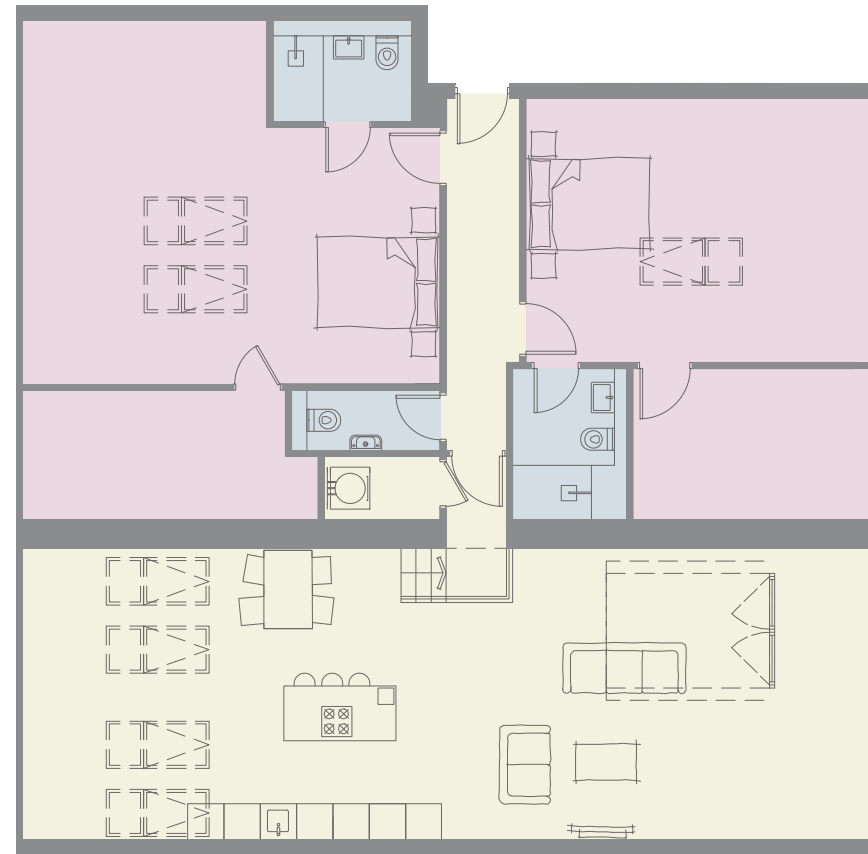
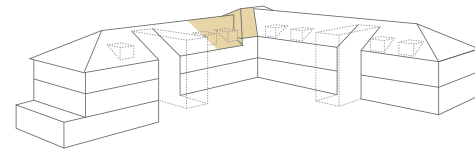


Living/Dining/Kitchen	31' 7" x 15' 1"
Bedroom 1	15' 5" x 11' 6"
En-Suite 1	7' 5" x 3' 11"
Bedroom 2	12' 3" x 9' 11"
Bedroom 3	16' 8" x 12' 3"
Bathroom	7' 10" x 5' 7"

IMPORTANT NOTICE: As part of their policy of continuous product development Newby reserves the right to make alterations, amendments or additions to the development or any part of it without prior notice. The plans and dimensions therefore are subject to change and intended for guidance only. All dimensions shown are maximum sizes.

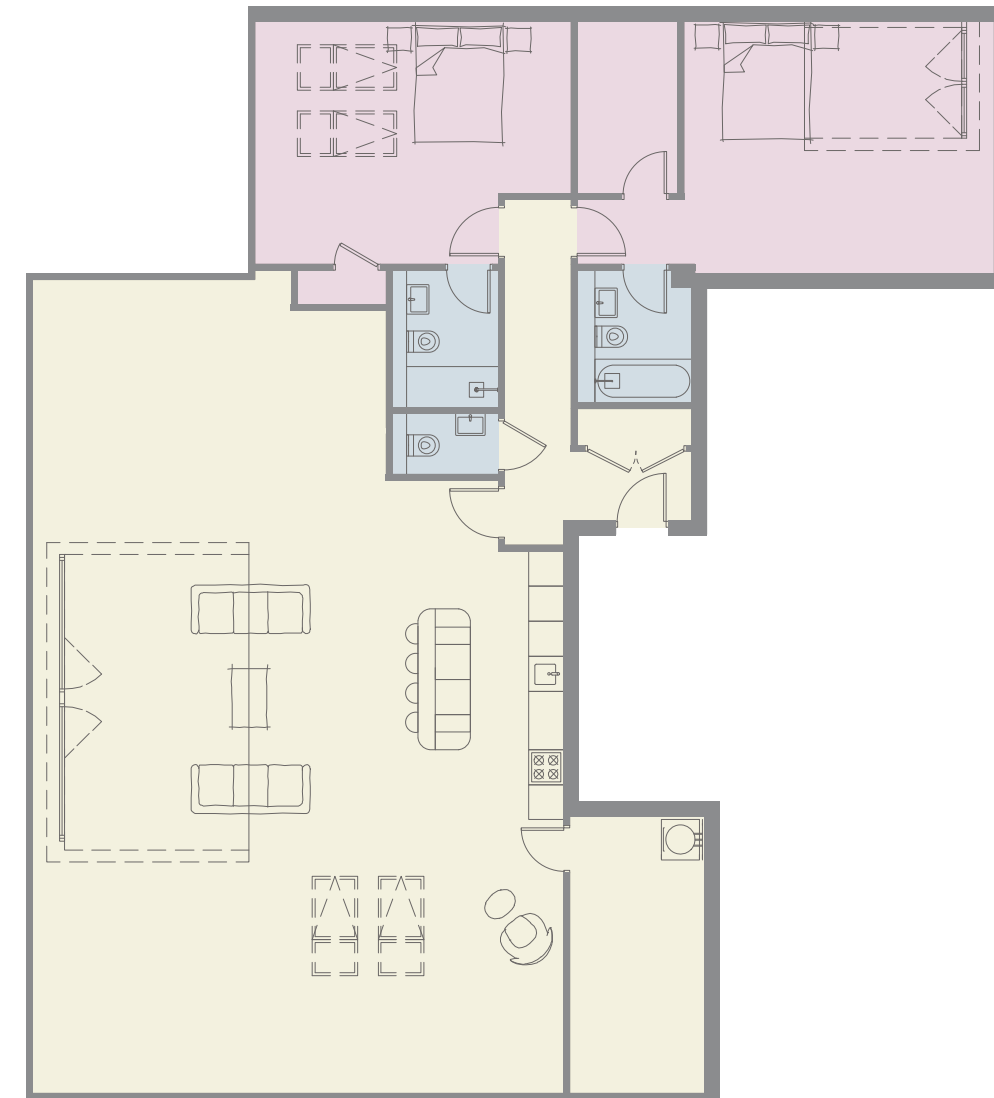
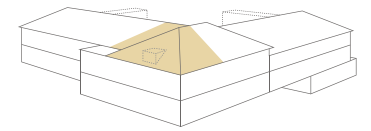


Second Floor
Apartment 26



Living/Dining/Kitchen	31' 7" x 15' 10"
Bedroom 1	13' 11" x 13' 9"
En-Suite 1	7' 6" x 4' 8"
Bedroom 2	13' 3" x 9' 9"
En-Suite 2	7' 7" x 5' 7"

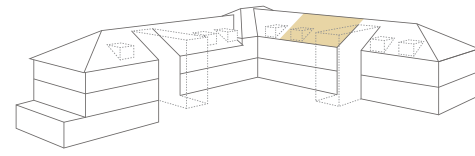
Second Floor
Apartment 27



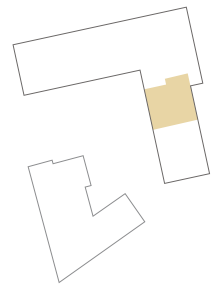
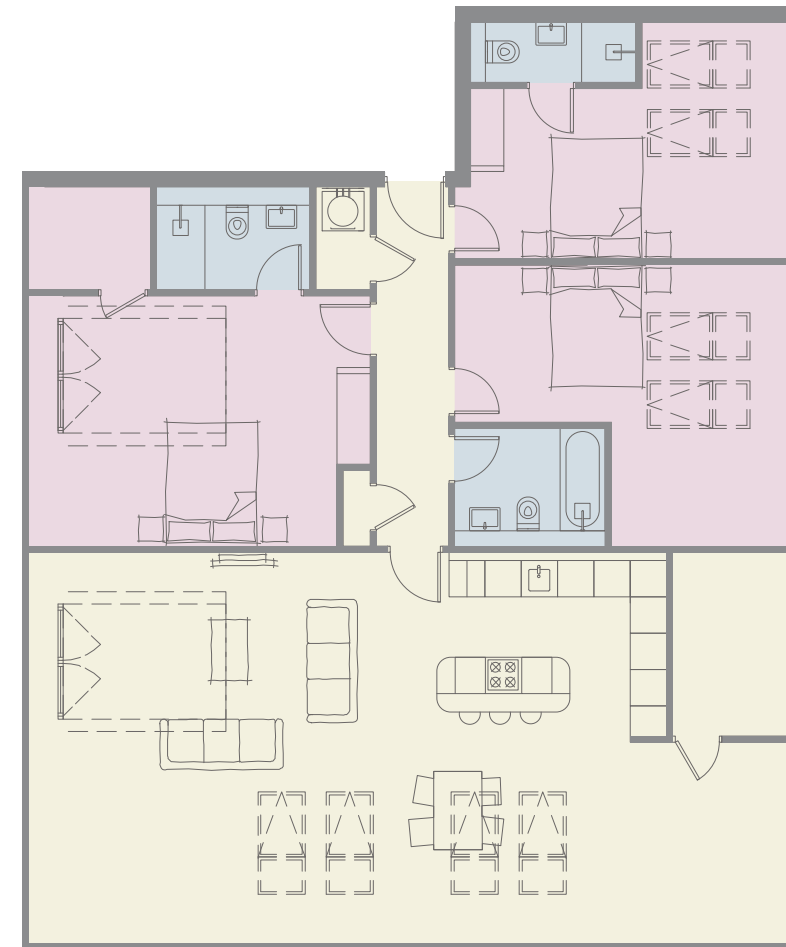
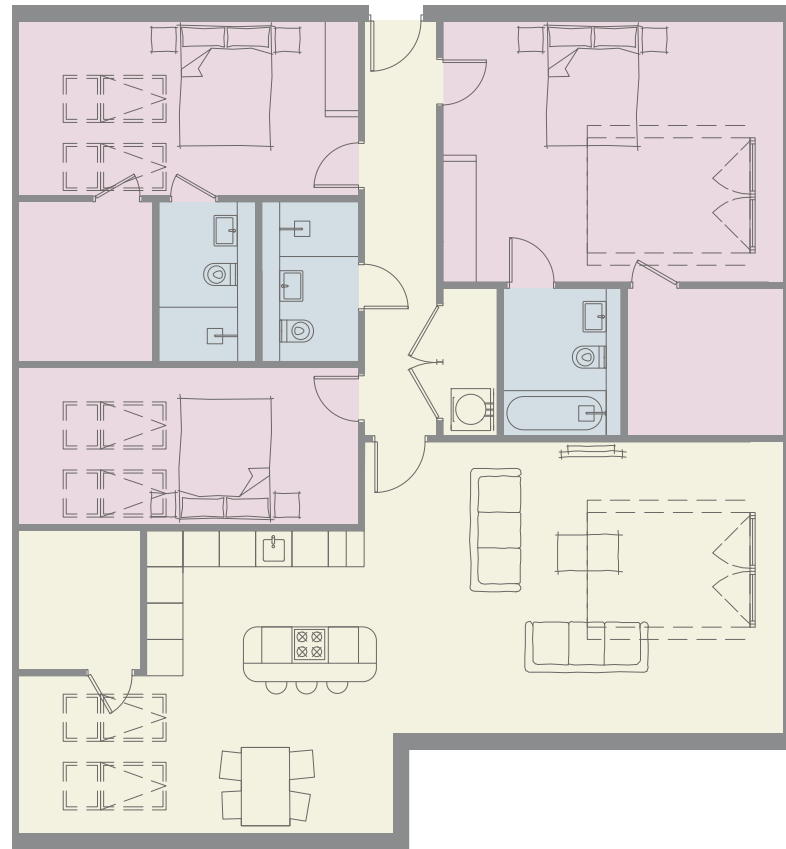
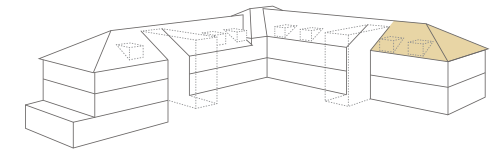
Living/Dining/Kitchen	32' 3" x 19' 7"
Bedroom 1	22' 4" x 14' 2"
En-Suite 1	7' 3" x 5' 7"
Dressing	5' 5" x 9' 6"
Bedroom 2	17' 3" x 13' 7"
En-Suite 2	7' 10" x 4' 11"
Storage	7' 6" x 6' 6"

IMPORTANT NOTICE: As part of their policy of continuous product development Newby reserves the right to make alterations, amendments or additions to the development or any part of it without prior notice. The plans and dimensions therefore are subject to change and intended for guidance only. All dimensions shown are maximum sizes.

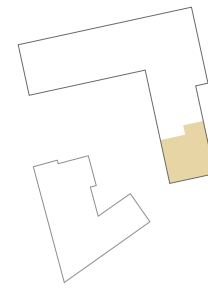
Second Floor
Apartment 33



Second Floor
Apartment 34



Living/Dining/Kitchen	32' 3" x 21' 4"
Bedroom 1	16' 8" x 14' 2"
En-Suite 1	8' 0" x 5' 7"
Bedroom 2	11' 0" x 9' 6"
En-Suite 2	8' 3" x 4' 10"
Bedroom 3	10' 11" x 8' 6"
Bathroom	8' 8" x 5' 1"



Living/Dining/Kitchen	32' 3" x 13' 9"
Bedroom 1	16' 8" x 13' 7"
En-Suite 1	7' 9" x 5' 6"
Bedroom 2	12' 10" x 10' 1"
En-Suite 2	9' 0" x 3' 3"
Bedroom 3	15' 3" x 10' 11"
Bathroom	8' 2" x 5' 7"

IMPORTANT NOTICE: As part of their policy of continuous product development Newby reserves the right to make alterations, amendments or additions to the development or any part of it without prior notice. The plans and dimensions therefore are subject to change and intended for guidance only. All dimensions shown are maximum sizes.

Specification

Kitchen

NEFF kitchen appliances

Integrated Slide & Hide oven

Integrated fridge/freezer

Integrated dishwasher

Stainless steel Franke sink and mixer

Franke extract hood

Soft close cabinets

Kitchen island to top floor apartments

Bedrooms

High quality carpets

Recessed LED downlighters

Bathrooms, En-Suites & WCs

Fully tiled bathrooms and en-suites

Vessini bathroom suites

Vessini chrome sanitary ware fittings

Underfloor heating system

Chrome towel rails

Automatic feature lighting

Media

All apartments are provided with a range of data and broadband connections

USB sockets to the bedrooms and kitchen/living space

Interior

Walnut veneer doors

High quality wooden flooring

Mood lighting

Smart device compatible heating controls

Communal

Private gated development

Secure allocated parking

Lifts to all floors

Full digital colour video entry system

Security

Digital HD CCTV system

Complete 'monitoring ready' intruder alarms to all apartments

Fire alarm

External lighting

Tenure

999 year lease

Warranty

10 Year Checkmate warranty



Springfield Court

Food & Drink

- 01. The Ivy
- 02. Bettys
- 03. The Orchid
- 04. William & Victoria
- 05. Stuzzi

Shopping

- 06. Montpellier Quarter
- 07. Victoria Shopping Centre
- 08. King's Road Shopping Parade

Culture & Entertainment

- 09. The Majestic Health Club
- 10. International Centre
- 11. Royal Hall
- 12. Theatre
- 13. The Everyman

Previous Local Success

- 14. Windsor Court
- 15. Devonshire Place



The Developer

About Newby

Newby is a North Yorkshire based developer established in 2008, with a strong track record within the local area and known for building well designed, high quality residential developments. Newby manages their own construction and strives to use local sub-contractors and suppliers.

Together with their team of experienced professionals and partners, Newby actively seek the highest standards for both the interior and exterior of each project, down to every last detail, ensuring each property is a home they would live in themselves.

Coming Soon



Glasshouses Mill, Nidderdale



Ryedale House, York



Devonshire Lane, Harrogate



West House Gardens, Birstwith

Previous Local Success



Devonshire Place, Harrogate



Castle Chambers, York



Windsor Court, Harrogate



NEWBY

springfieldcourtharrogate.co.uk
newby.co.uk



01423 503076
nichollstyreman.com

Important Notice

The details contained in this brochure are for guidance only. All photographs, illustrations, plans and sizes indicated only give a general indication of the proposed development. Newby operate a policy of continuous development and features, specifications and elevational treatments may vary. We reserve the right to alter any part of the development. Particulars described in this brochure should not be relied upon as accurately describing any specific matters. This information does not constitute a contract, part of contract or warranty.