

# whiteley helyar



975 ft<sup>2</sup>



2 double  
bedrooms



2 bathrooms



garage

Guide Price                      £500,000

Ground Floor Apartment, 15 Haygarth Court, Lansdown Grove, Bath, BA1 5EL



## Ground Floor Apartment, 15 Haygarth Court, Lansdown Grove, Bath, BA1 5EL

### DESCRIPTION

A spacious ground floor apartment in this attractive Victorian building, enjoying panoramic views and with direct access onto a private courtyard garden - facing approximately South and for the sole use of this flat.

### ACCOMMODATION

2 double bedrooms  
en-suite shower room  
kitchen  
gas fired heating

bathroom  
sitting room  
dining room  
garage

### EXTERNALLY

Private courtyard garden/paved sun terrace (about 20' x 15'). Extensive communal gardens which are beautifully tended, mainly laid to lawn with well stocked flower and herbaceous borders, mature trees, bushes, shrubs, ornamental pond and sitting areas to take in the lovely gardens and views. Good sized single garage.

### LOCATION

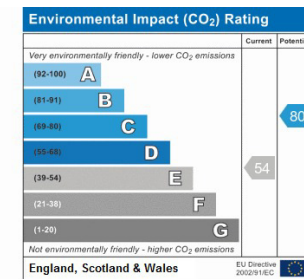
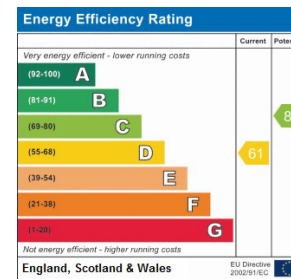
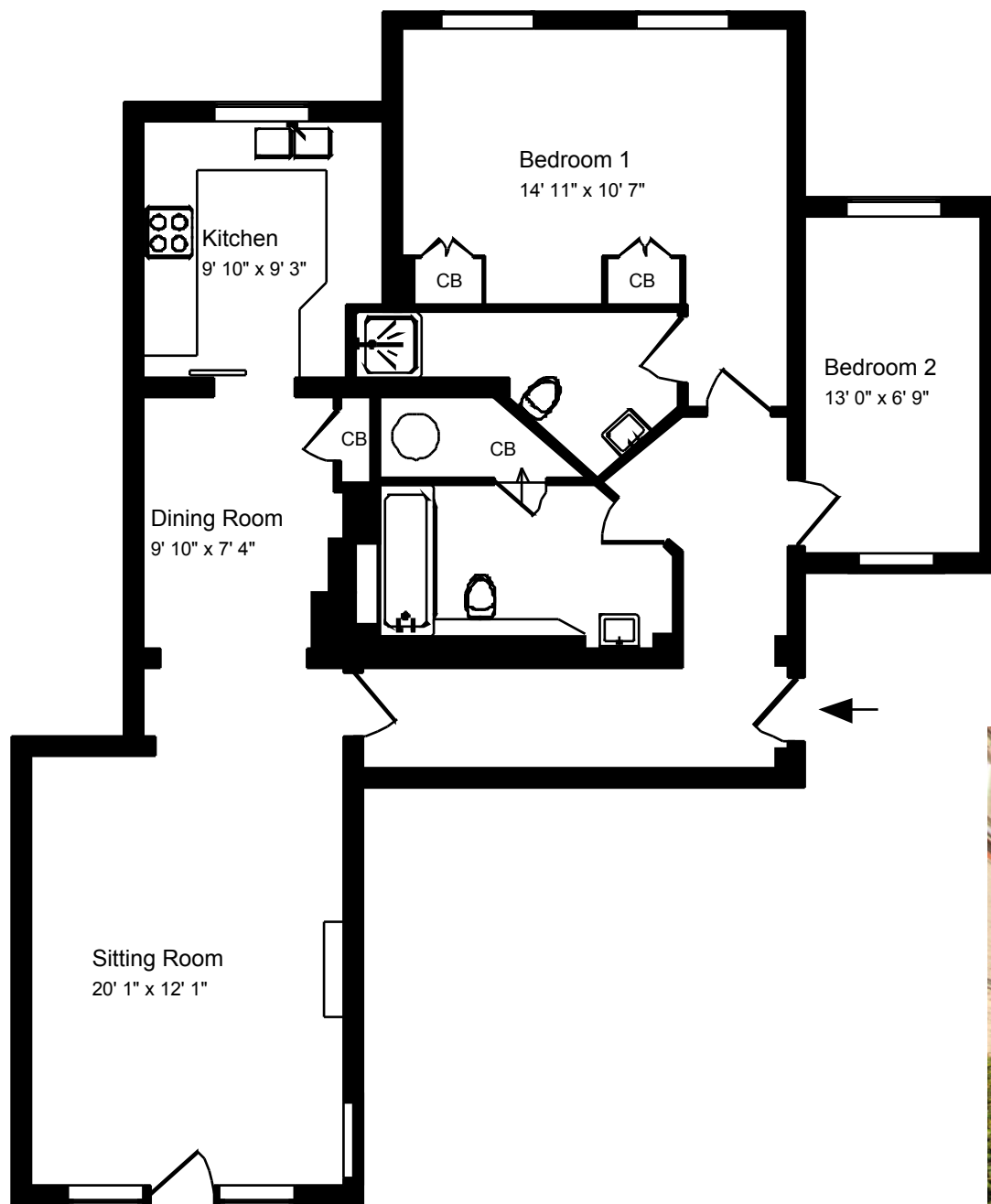
Haygarth Court occupies a fine, quiet yet most convenient position on the city's prime Northern slopes. It is less than a mile from (and well served by buses to) the city centre - with its countless shops and amenities. Easy access to the M4 without having to cross Bath.











Approx. Gross Internal Floor Area 975 Sq. Ft. / 90 Sq. M  
Includes Conservatories. Excludes Garages, Porches etc. unless stated  
For identification purposes only. Not to scale. Copyright Jemesis Ltd 2019  
Drawing Number: 172-0101  
Ground Floor Apartment, 15 Haygarth Court, Lansdown Grove, Bath, BA1 5EL.