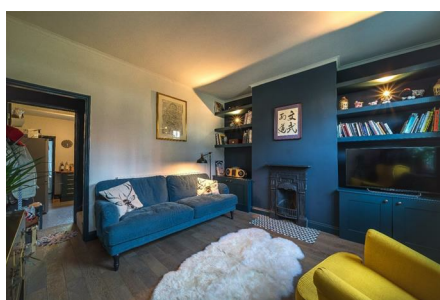


Wilkinson Street, Broomhill, Sheffield, S10



£1,250 Per month

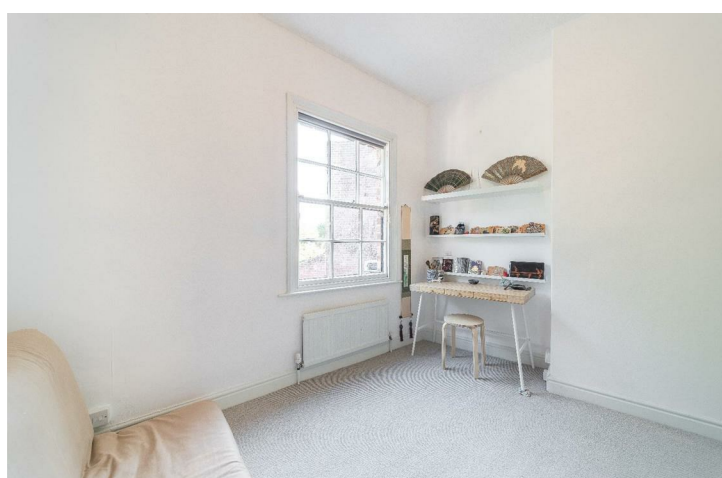


SPECTACULAR 3 bedroom end terraced house located in the POPULAR location of BROOMHILL ideal for PROFESSIONALS, COUPLES or SINGLES. This character filled property is presented to a high spec throughout with a stunning garden to the rear, offered part-furnished with WHITE GOODS included. This is a MUST SEE property so get in touch today to avoid disappointment! Available Early April!

- * 3 Large Double Rooms
- * Lots of Character
- * Presented to a high Spec
- * Offered Part-furnished
- * Pretty Garden to Rear
- * Brilliant Location
- * Available Early April!

BELVOIR!

Belvoir! Sheffield Lettings
34 Campo Lane, Sheffield, South Yorkshire, S1 2EG
sheffield@belvoir.co.uk



Energy Efficiency Rating		
	Current	Potential
Very energy efficient - lower running costs		
(92 plus) A		
(81-91) B		80
(69-80) C		
(55-68) D		
(39-54) E	51	
(21-38) F		
(1-20) G		
Not energy efficient - higher running costs		
England & Wales		EU Directive 2002/91/EC
Environmental Impact (CO ₂) Rating		
	Current	Potential
Very environmentally friendly - lower CO ₂ emissions		
(92 plus) A		
(81-91) B		79
(69-80) C		
(55-68) D		
(39-54) E	48	
(21-38) F		
(1-20) G		
Not environmentally friendly - higher CO ₂ emissions		
England & Wales		EU Directive 2002/91/EC

Call: 0114 2525 215

belvoir.co.uk