

10 Cambridge Road, Hove, East Sussex BN3 1DF

**Guide price £149,950**

Middleton Estates are delighted to offer this top floor studio flat. Located in the heart of the city within 50 metres of Western Road boasting a wide range of shops, bars and restaurants. Internally the property offers large studio room with modern fitted kitchen area and modern white shower room.

Being sold with no on going chain.

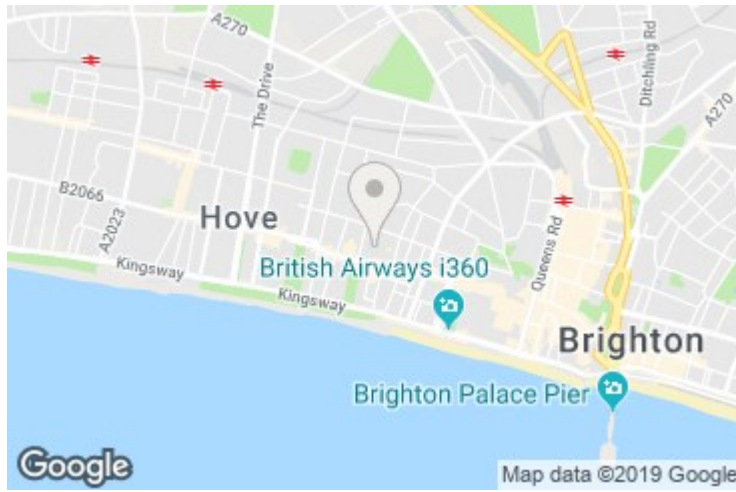
10 Cambridge Road, Hove, East Sussex BN3 1DF

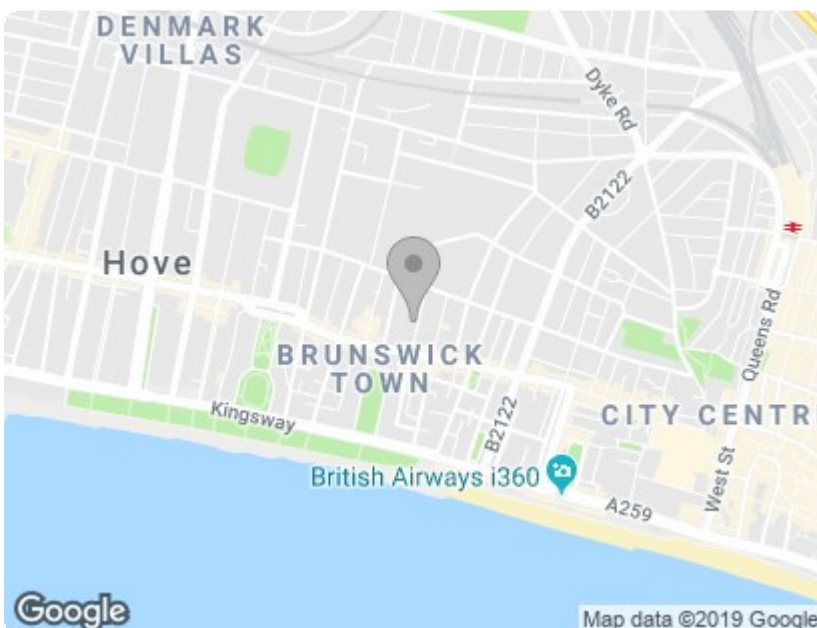
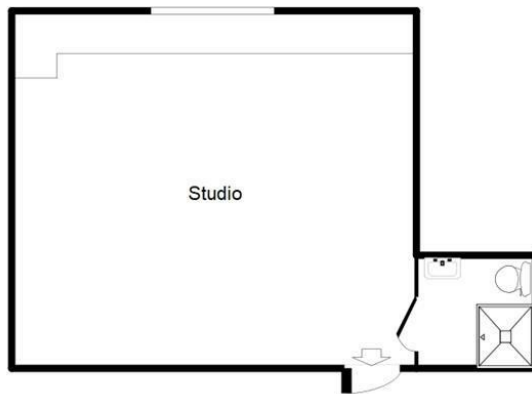
Communal Entrance Hall

Studio Room

15'95 x 10'35 (4.57m x 3.05m)

Shower Room





Energy Efficiency Rating		
	Current	Potential
Very energy efficient - lower running costs		
(92 plus) <b>A</b>		
(81-91) <b>B</b>		
(69-80) <b>C</b>		
(55-68) <b>D</b>		
(39-54) <b>E</b>		
(21-38) <b>F</b>		
(1-20) <b>G</b>		
Not energy efficient - higher running costs		
<b>England &amp; Wales</b>	EU Directive 2002/91/EC	

Environmental Impact (CO <sub>2</sub> ) Rating		
	Current	Potential
Very environmentally friendly - lower CO <sub>2</sub> emissions		
(92 plus) <b>A</b>		
(81-91) <b>B</b>		
(69-80) <b>C</b>		
(55-68) <b>D</b>		
(39-54) <b>E</b>		
(21-38) <b>F</b>		
(1-20) <b>G</b>		
Not environmentally friendly - higher CO <sub>2</sub> emissions		
<b>England &amp; Wales</b>	EU Directive 2002/91/EC	