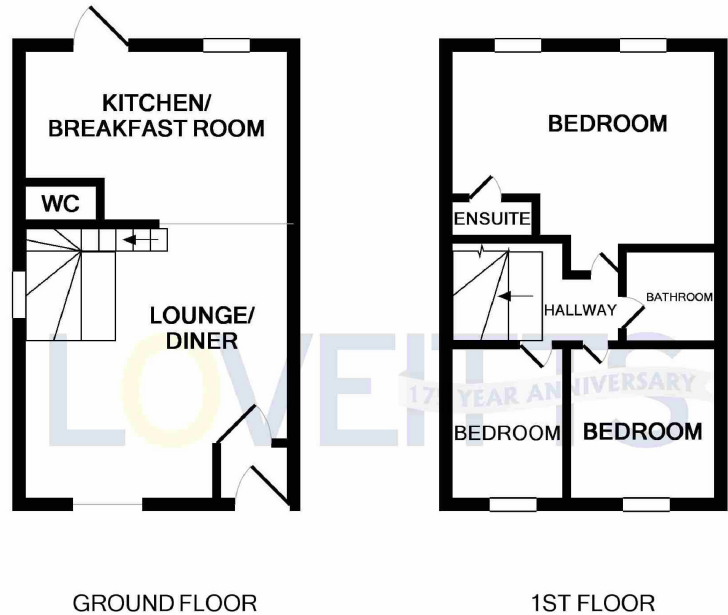


Plot I, Codys Court Silverdale Close, Coventry,
Offers in the region of £210,000





Whilst every attempt has been made to ensure the accuracy of the floor plan contained here, measurements of doors, windows, rooms and any other items are approximate and no responsibility is taken for any error, omission, or mis-statement. This plan is for illustrative purposes only and should be used as such by any prospective purchaser. The services, systems and appliances shown have not been tested and no guarantee as to their operability or efficiency can be given
Made with Metropix ©2019

A selection of five, three bedroom houses soon ready to move into. Boasting off road parking, open plan lounge/ kitchen diners, en-suites to the master bedroom and enclosed rear gardens.

Codys Court is positioned on Silverdale Close in Aldermans Green, bordering Longford this area benefits from ease of access to the A444, M6, Bayton Road industrial Estate, within walking distance to Longford Park and Wyken Pool and regular bus routes in to Coventry city centre.

Local schools include Grangehurst Primary School and Aldermans Green Community Primary School.

As the sellers agent we are not surveyors or conveyancing experts and as such we cannot and do not comment on the condition of the property or issues relating to title or other legal issues that may affect this property, unless we have been made aware of such matters. Interested parties should employ their own professionals to make such enquiries before making any transactional decisions.

